



Matchday 2
SERIE A TIM 2022-2023

MATCH REPORT



SASSUOLO



LECCE

Reggio Emilia 20/08/2022
MAPEI STADIUM - CITTA' DEL TRICOLORE STADIUM 20:45



SASSUOLO

1-0

LECCE



Line-ups

SASSUOLO	
47	ANDREA CONSIGLI GK
22	JEREMY TOLJAN
28	MARTIN ERLIC
13	GIANMARCO FERRARI
6	ROGERIO
16	DAVIDE FRATTESI
27	MAXIME LOPEZ
7	MATHEUS HENRIQUE
10	DOMENICO BERARDI
9	ANDREA PINAMONTI
77	GEORGIOS KYRIAKOPOULOS



Bench	
25	GIANLUCA PEGOLO
64	ALESSANDRO RUSSO
3	RICCARDO MARCHIZZA
5	KAAN AYHAN
8	ABDOU HARROUI
11	AGUSTIN ALVAREZ
14	PEDRO OBIANG
15	EMIL CEIDE
42	KRISTIAN THORSTVEDT
44	RUAN TRESSOLDI
92	GREGOIRE DEFREL

Coach **ALESSIO DIONISI**

LECCE	
GK	WLADIMIRO FALCONE 30
	VALENTIN GENDREY 17
	ALEXIS BLIN 29
	FEDERICO BASCHIROTTO 6
	ANTONINO GALLO 25
	KRISTIJAN BISTROVIC 8
	MORTEN HJULMAND 42
	JOAN GONZALEZ 16
	GABRIEL STREFEZZA 27
	ASSAN CEESAY 77
	FEDERICO DI FRANCESCO 11



Bench	
	MARCO BLEVE 1
	FEDERICO BRANCOLINI 21
	KRISTOFFER ASKILDSEN 7
	LORENZO COLOMBO 9
	ALESSANDRO TUIA 13
	THORIR HELGASON 14
	MARCIN LISTKOWSKI 19
	LAMECK BANDA 22
	GIANLUCA FRABOTTA 24
	MATTIA CIUCCI 26
	JOEL VOELKERLING 31
	MATS LEMMENS 83
	PABLO RODRIGUEZ 99

Coach **MARCO BARONI**

Referee **ANDREA COLOMBO**
Assistant referee 1 **MARCELLO ROSSI**
Assistant referee 2 **DANIELE MARCHI**

Fourth Official **GIANPIERO MIELE**
V.A.R.: **MASSIMILIANO IRRATI**
A.V.A.R.: **FABRIZIO LOMBARDO**

Reggio Emilia 20/08/2022 MAPEI STADIUM - CITTA' DEL TRICOLORE STADIUM - 20:45



SASSUOLO

1-0

LECCE



Match Events

SAS



LEC

SASSUOLO

1

M. HENRIQUE	37'	
D. BERARDI	40'	
D. BERARDI	55'	
K. THORSTVEDT M. HENRIQUE	63'	
G. DEFREL A. PINAMONTI	63'	
ROGERIO	66'	
D. FRATTESI	77'	
A. HARROUI D. FRATTESI	80'	
J. TOLJAN	90'+5'	
K. AYHAN G. KYRIAKOPOULOS	90'+5'	

LECCE

0

Int	L. BANDA F. DI FRANCESCO
68'	J. GONZALEZ
70'	T. HELGASON K. BISTROVIC
80'	L. COLOMBO A. CEESAY
80'	K. ASKILDSEN J. GONZALEZ
90'	M. LISTKOWSKI G. STREFEZZA

Legend

- Goal
- Penalty
- Yellow Card
- Red Card
- Owngoal
- Missed Penalty
- Assist
- Substitution
- Second Yellow Card



SASSUOLO

1-0

LECCE



Game time



Played Time
56%



1st Half - 2nd Half
28'53 - 25'48

BALL POSSESSION

Played Time 54'41



Total 32'16



Total 22'25



QUARTERS BALL POSSESSION

1st H	0'-15'	2nd H	0'-15'
7'18	5'55	3'51	6'47
	16'-30'		16'-30'
5'34	2'19	3'14	2'31
	31'-47'		31'-50'
6'35	1'12	5'44	3'41

TEAM STATS

	SAS	LEC
Attempts	12	7
Attempts on target (goals)	3(1)	1(0)
Attempts on target by Set piece plays	1	
Attempts on target from penalty box	2	0
Attempts off target	4	4
Blocked Shots	5	2
Scoring Chances	8	4
Key Passes	8	4
Fouls Committed	14	12
Corners	5	4
Offsides		4
Cross Successful/Attempted	4/8	8/15
Dribbling	9	7
Passes Completed	439	279
Passes Completed/Attempted (%)	86%	82%
Passes Final Third	83	64
Balls played forward	194	120
Long Passes	47	30
Saves	1	2
Gained Possessions	39	46



SASSUOLO

1-0

LECCE



PLAYER STATS

SASSUOLO									
	M	GC	OG	S	STP	SF	FYC	SYC	RC
47 A. CONSIGLI	90'			1					
LECCE									
	M	GC	OG	S	STP	SF	FYC	SYC	RC
30 W. FALCONE	90'	1		2					

	M	G	OG	A	AT	PT	SC	FS	BP	AS	KP	P	P(%)	PA	R	FYC	SYC	RC
22 J. TOLJAN	90'						1	1	59		1	31	76	17	5	1		
28 M. ERLIC	90'							1	72			63	95	20	4			
13 G. FERRARI	90'								78			70	96	20	2			
6 ROGERIO	90'							1	74			42	84	19	5	1		
16 D. FRATTESI	80'			2				1	43			19	66	12	4	1		
27 M. LOPEZ	90'						2		89		2	78	95	42	8			
7 M. HENRIQUE	64'			2	1		2		33		2	23	82	14	1	1		
10 D. BERARDI	90'	1		5	1		2	3	65		2	26	68	19	2	1		
9 A. PINAMONTI	64'			2				1	24		1	10	77	8	2			
77 G. KYRIAKOPOULOS	89'			1	1			2	42			12	80	10	1			
5 K. AYHAN	1'																	
8 A. HARROUI	10'								9			5	71	3				
42 K. THORSTVEDT	26'								20			12	75	3	1			
92 G. DEFREL	26'							1	10			3	50	1	4			

Legenda

FYC	Yellow Card
OG	Owngoal
BP	Balls Played
SYC	Double Yellow Card
RC	Red Card
G	Goals
GC	Goal Conceded
M	Minutes Played
AS	Assists
FS	Fouls Suffered
A	Attempts
AT	Attempts on target
SC	Scoring Chances
PT	Posts
S	Saves
STP	Saves on set piece plays
SF	Saves on free kick
P(%)	Passes Completed/Attempted (%)
KP	Key Passes
PA	Balls played forward
P	Passes Completed
R	Gained Possessions

PLAYERS RANKING

Attempts			Attempts on target (goals)			Passes Final Third			Scoring Chances		
1	D. BERARDI	SAS 5	1	D. BERARDI	SAS 1	1	M. LOPEZ	SAS 17	1	D. BERARDI	SAS 2
2	A. CEESAY	LEC 3	2	F. DI FRANCESCO	LEC 1	2	M. HJULMAND	LEC 15	2	A. GALLO	LEC 2
3	D. FRATTESI	SAS 2	3	M. HENRIQUE	SAS 1	3	D. BERARDI	SAS 10	3	M. HENRIQUE	SAS 2
4	M. HENRIQUE	SAS 2	4	G. KYRIAKOPOULOS	SAS 1	4	F. BASCHIROTTTO	LEC 8	4	M. LOPEZ	SAS 2
5	A. PINAMONTI	SAS 2				5	G. KYRIAKOPOULOS	SAS 8	5	V. GENDREY	LEC 1

Balls Played			Passes Completed			Key Passes			Dribbling		
1	M. LOPEZ	SAS 89	1	M. LOPEZ	SAS 78	1	D. BERARDI	SAS 2	1	D. FRATTESI	SAS 6
2	G. FERRARI	SAS 78	2	G. FERRARI	SAS 70	2	A. GALLO	LEC 2	2	A. CEESAY	LEC 2
3	ROGERIO	SAS 74	3	M. ERLIC	SAS 63	3	M. HENRIQUE	SAS 2	3	J. GONZALEZ	LEC 2
4	A. BLIN	LEC 73	4	A. BLIN	LEC 58	4	M. LOPEZ	SAS 2	4	D. BERARDI	SAS 1
5	M. ERLIC	SAS 72	5	F. BASCHIROTTTO	LEC 45	5	V. GENDREY	LEC 1	5	G. DEFREL	SAS 1



SASSUOLO

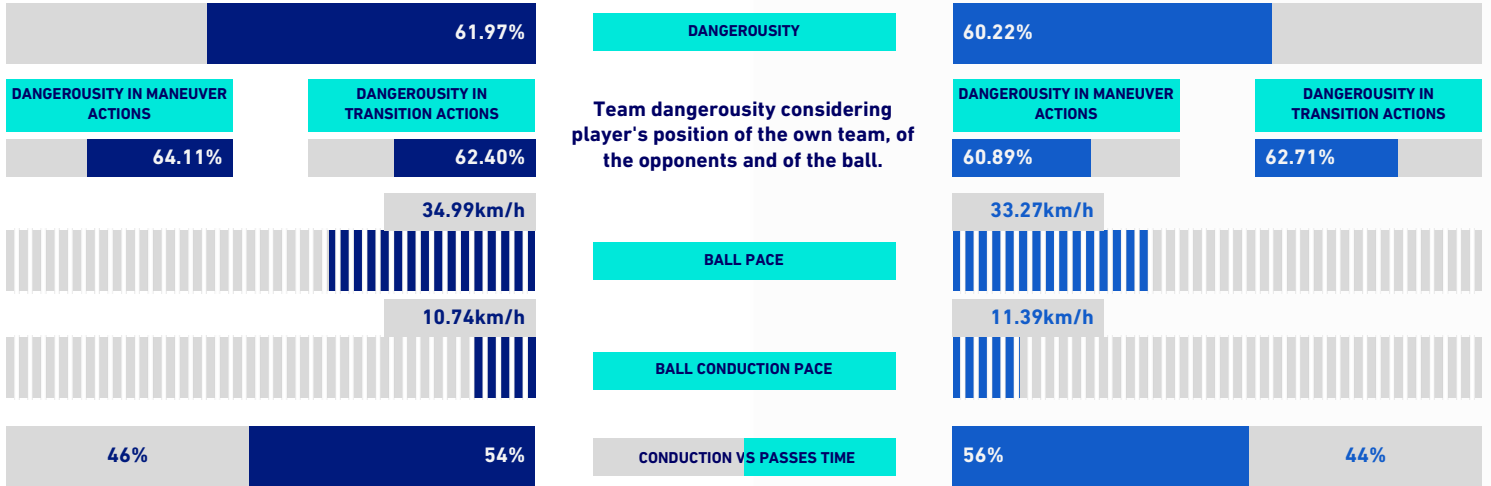
1-0

LECCE



VIRTUAL COACH

TEAM INDICATORS



RECORDMEN

PASS GAIN

Number of players overtaken by a vertical pass (only successful passes are considered). It shows how much a player tends to overcome the opponent's pressure lines.

Rank	Player	Value	Rank	Player	Value
1	13 G. FERRARI	3.43	1	16 J. GONZALEZ	6.00
2	9 A. PINAMONTI	3.25	2	42 M. HJULMAND	5.11
3	10 D. BERARDI	3.13	3	6 F. BASCHIROTTO	4.95
4	27 M. LOPEZ	2.85	4	27 G. STREFEZZA	4.17
5	28 M. ERLIC	2.80	5	25 A. GALLO	4.00

PASS RISK

Measures the player's propensity to risk the pass (only successful passes are considered).

Rank	Player	Value	Rank	Player	Value
1	77 G. KYRIAKOPOULOS	35.43%	1	25 A. GALLO	41.81%
2	16 D. FRATTESI	26.60%	2	77 A. CEESAY	35.33%
3	27 M. LOPEZ	23.38%	3	11 F. DI FRANCESCO	34.00%
4	6 ROGERIO	21.26%	4	6 F. BASCHIROTTO	28.14%
5	47 A. CONSIGLI	16.42%	5	22 L. BANDA	26.38%

RECEIVED PRESSURE

How much the player with the ball is pressed by the opposite team. It depends on the speed, running direction and distance from the opponent who is at a shorter distance.

Rank	Player	Value	Rank	Player	Value
1	9 A. PINAMONTI	70.16%	1	77 A. CEESAY	73.75%
2	16 D. FRATTESI	62.76%	2	8 K. BISTROVIC	62.63%
3	7 M. HENRIQUE	62.39%	3	22 L. BANDA	61.28%
4	27 M. LOPEZ	56.33%	4	16 J. GONZALEZ	60.38%
5	10 D. BERARDI	50.64%	5	42 M. HJULMAND	54.37%

PASS AVAILABILITY

Ability of a player to get away from opponents to receive the ball. It is computed for all the teammates of the player in possession.

Rank	Player	Value	Rank	Player	Value
1	22 J. TOLJAN	85.78%	1	29 A. BLIN	82.61%
2	13 G. FERRARI	82.75%	2	6 F. BASCHIROTTO	78.38%
3	28 M. ERLIC	82.03%	3	17 V. GENDREY	73.89%
4	27 M. LOPEZ	74.85%	4	25 A. GALLO	71.85%
5	6 ROGERIO	71.81%	5	42 M. HJULMAND	69.78%



SASSUOLO

1-0

LECCE



PLAYERS RANKING [ATHLETICS PERFORMANCE]

Jog - Run - Sprint (km)			
1	MAXIME LOPEZ	Total 11.929	
	3.364	7.977	0.587
2	JEREMY TOLJAN	Total 10.482	
	3.635	5.717	1.128
3	GEORGIOS KYRIAKOPOULOS	Total 10.371	
	4.218	4.972	1.181
4	ROGERIO	Total 10.32	
	4.207	5.338	0.774
5	DOMENICO BERARDI	Total 10.102	
	4.597	4.585	0.919

AVG Speed km/h (run)			
1	G. DEFREL	SAS	10.99
2	M. LOPEZ	SAS	10.9
3	D. BERARDI	SAS	10.73
4	G. KYRIAKOPOULOS	SAS	10.73
5	K. THORSTVEDT	SAS	10.7

AVG Speed km/h (sprint)			
1	D. FRATTESI	SAS	32.77
2	ROGERIO	SAS	32.69
3	D. BERARDI	SAS	32.59
4	J. TOLJAN	SAS	32.33
5	A. PINAMONTI	SAS	32.02

Jog - Run - Sprint (km)			
1	MORTEN HJULMAND	Total 11.148	
	3.609	6.796	0.743
2	ANTONINO GALLO	Total 10.515	
	4.039	5.556	0.92
3	VALENTIN GENDREY	Total 10.455	
	3.712	5.983	0.759
4	ALEXIS BLIN	Total 10.386	
	4.012	5.856	0.517
5	FEDERICO BASCHIROTTO	Total 10.313	
	3.55	6.194	0.569

AVG Speed km/h (run)			
1	L. COLOMBO	LEC	10.96
2	M. LISTKOWSKI	LEC	10.73
3	K. ASKILDSEN	LEC	10.71
4	G. STREFEZZA	LEC	10.63
5	J. GONZALEZ	LEC	10.61

AVG Speed km/h (sprint)			
1	V. GENDREY	LEC	33.37
2	L. BANDA	LEC	33.31
3	A. GALLO	LEC	33.27
4	M. LISTKOWSKI	LEC	31.89
5	A. CEESAY	LEC	31.3

TEAM STATS [ATHLETICS PERFORMANCE]

Distance Covered (km)	106.461
AVG Speed (km/h)	6.49

Jog-Run-Sprint (km 106.461)		
40.482	58.104	7.874

Distance Covered (km)	107.188
AVG Speed (km/h)	6.58

Jog-Run-Sprint (km 107.188)		
37.506	62.189	7.492

Fitness data displayed in the report are the ones collected in real time and could be different to the post-processed ones, delivered to the coaching staff

Jog:	0-7 km/h	Run:	7.1-15 km/h	Sprint:	15.1+ km/h	Jog + Run + Sprint:	Distance covered
TOP Sprinter:	Top four players per team						

Reggio Emilia 20/08/2022 MAPEI STADIUM - CITTA' DEL TRICOLORE STADIUM - 20:45



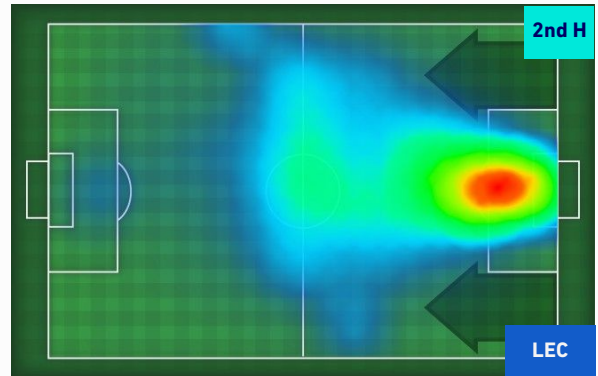
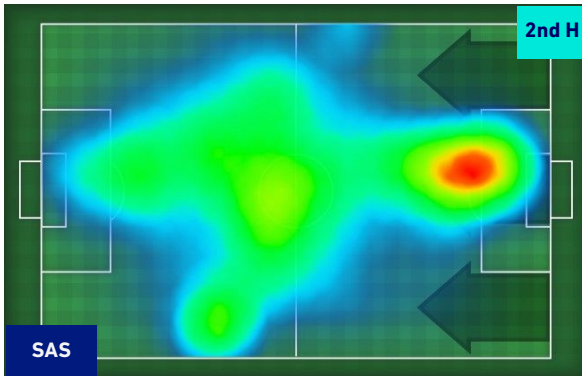
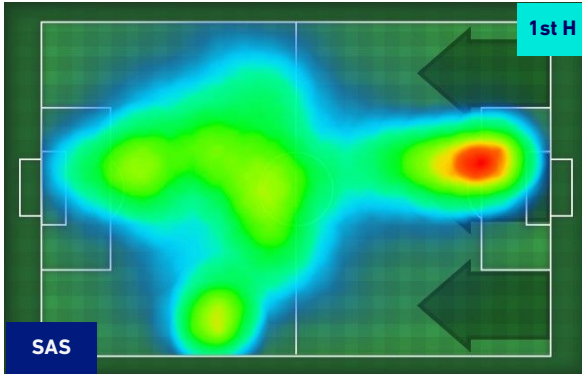
SASSUOLO

1-0

LECCE



HEATMAP





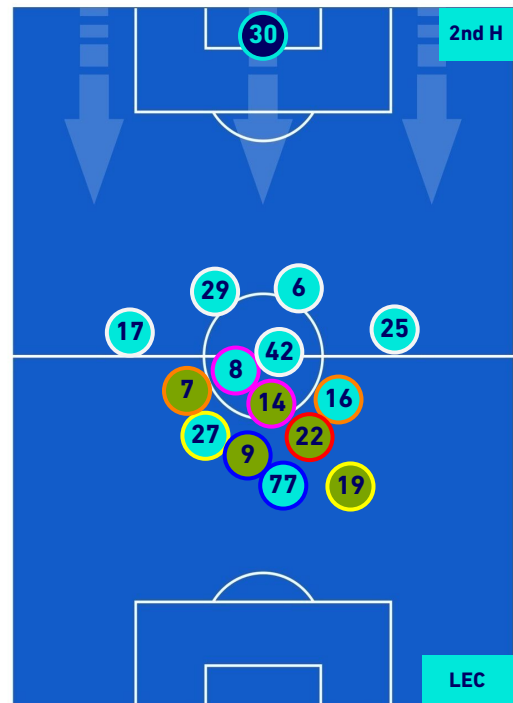
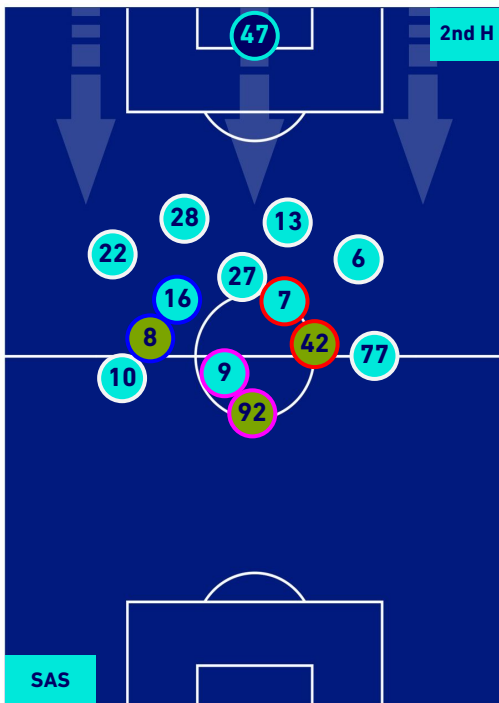
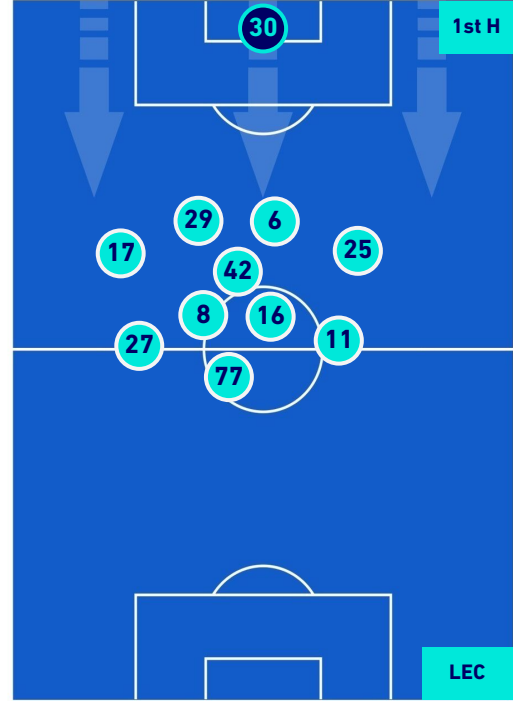
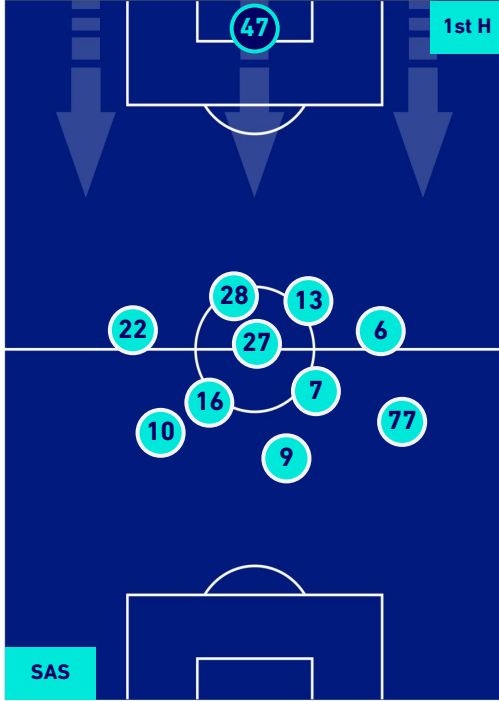
SASSUOLO

1-0

LECCE



PLAYERS AVERAGE POSITION



Legend:

- 1st Substitution Player in
- 2nd Substitution Player in
- 3rd Substitution Player in
- 4th Substitution Player in
- 5th Substitution Player in

- Player out
- Player out
- Player out
- Player out
- Player out

- Player in / out
- Player in / out
- Player in / out
- Player in / out
- Player in / out

-
-
-
-
-



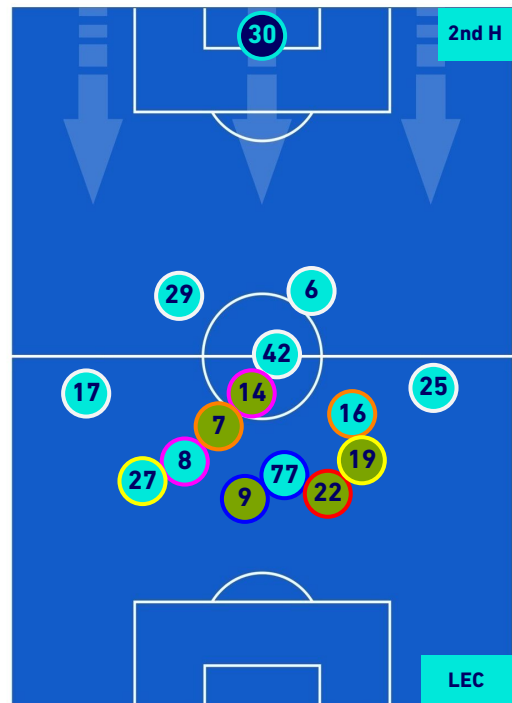
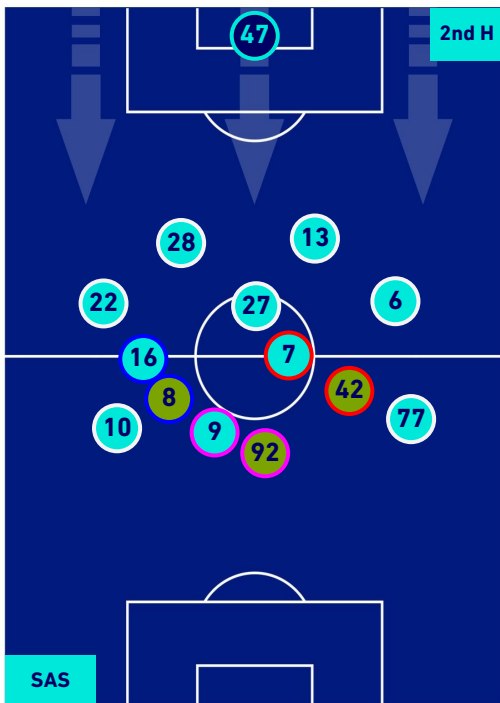
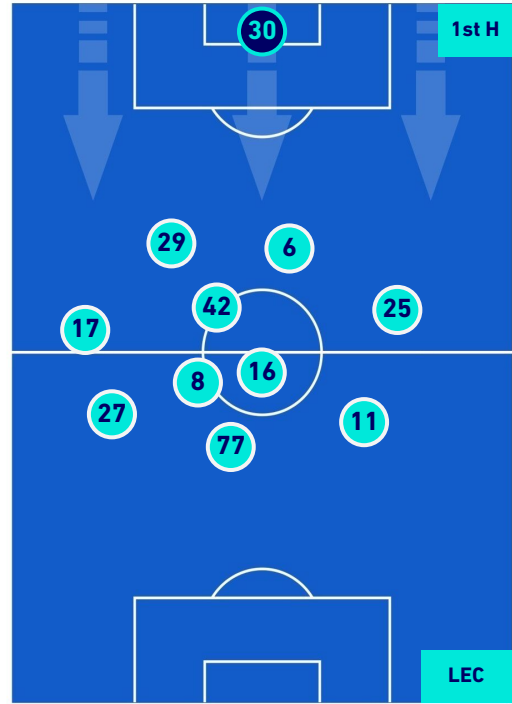
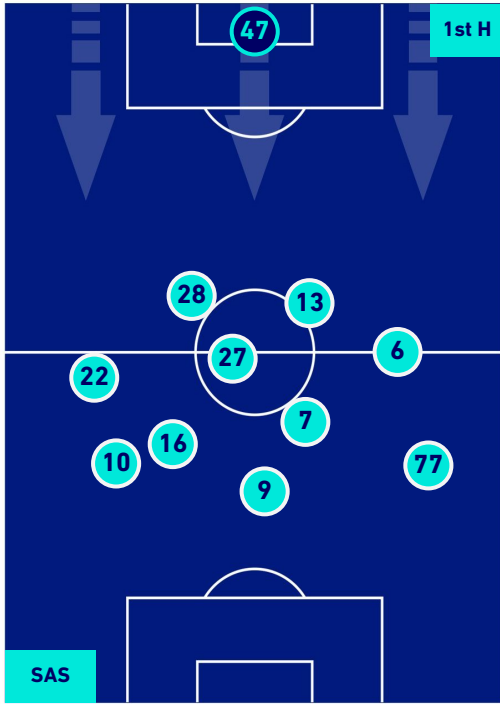
SASSUOLO

1-0

LECCE



PLAYERS AVERAGE POSITION [BALL POSSESSION]



Legend:

- 1st Substitution Player in
- 2nd Substitution Player in
- 3rd Substitution Player in
- 4th Substitution Player in
- 5th Substitution Player in

- Player out
- Player out
- Player out
- Player out
- Player out

- Player in / out
- Player in / out
- Player in / out
- Player in / out
- Player in / out

-
-
-
-
-

Reggio Emilia 20/08/2022 MAPEI STADIUM - CITTA' DEL TRICOLORE STADIUM - 20:45



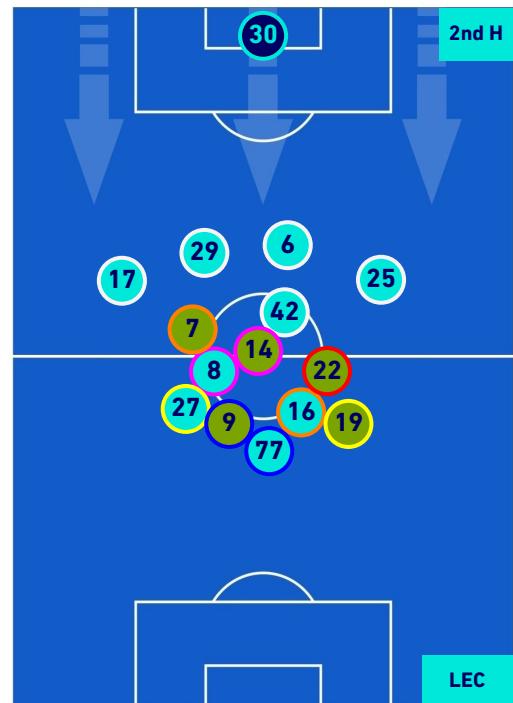
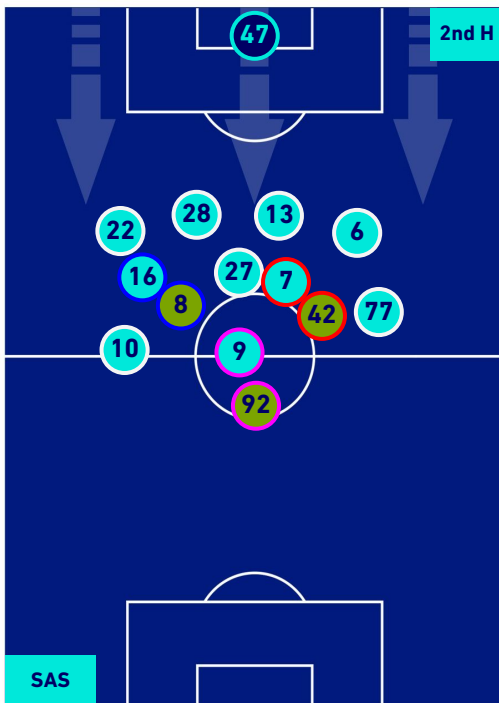
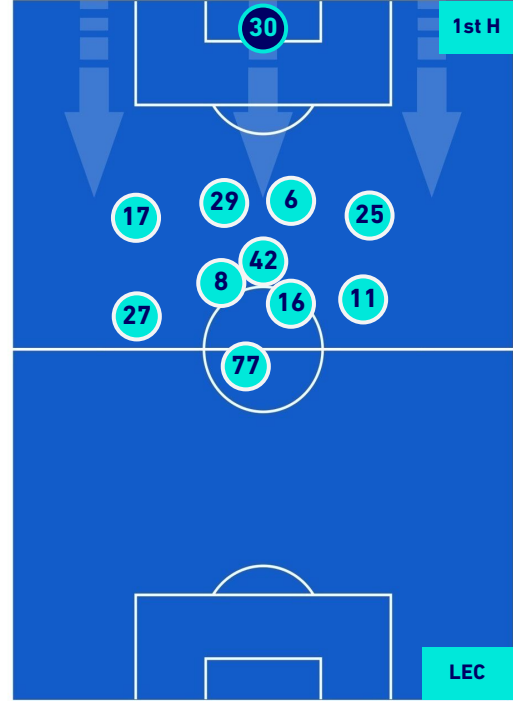
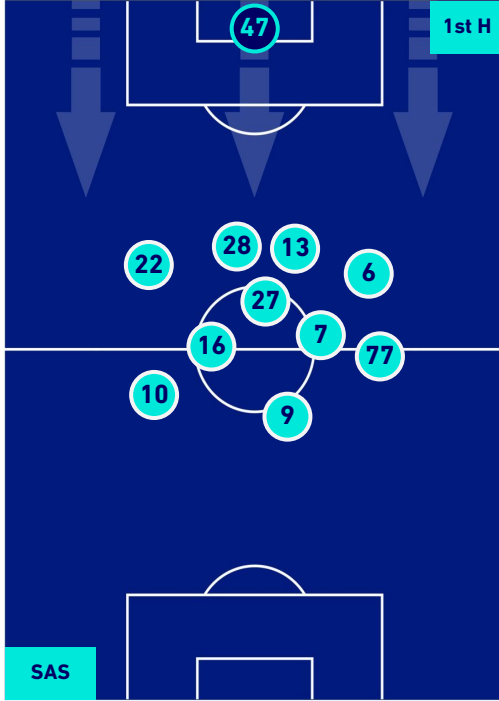
SASSUOLO

1-0

LECCE



PLAYERS AVERAGE POSITION [NO BALL POSSESSION]



Legend:

- 1st Substitution ● Player in
- 2nd Substitution ● Player in
- 3rd Substitution ● Player in
- 4th Substitution ● Player in
- 5th Substitution ● Player in

- Player out
- Player out
- Player out
- Player out
- Player out

- Player in / out
- Player in / out
- Player in / out
- Player in / out

-
-
-
-



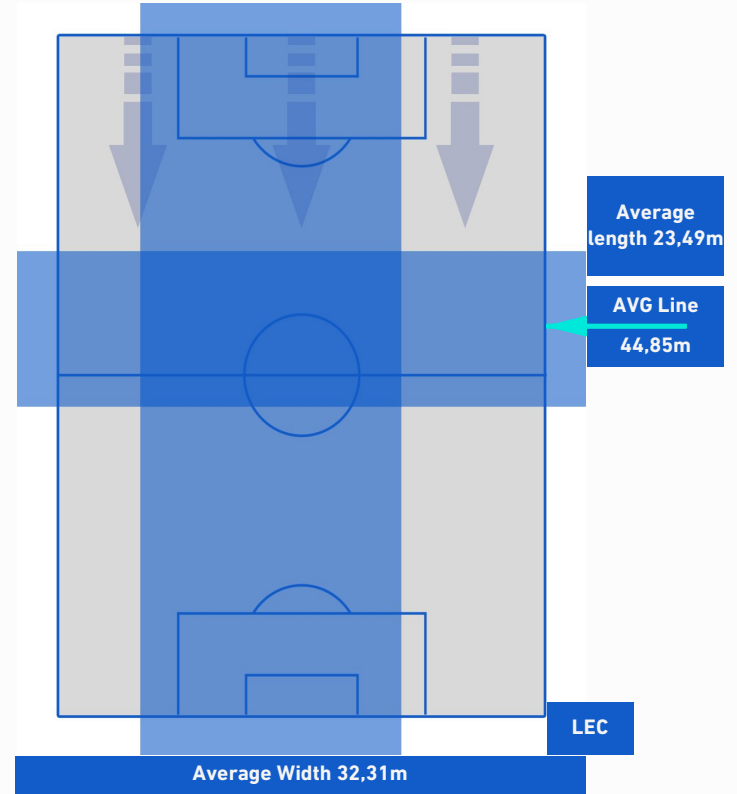
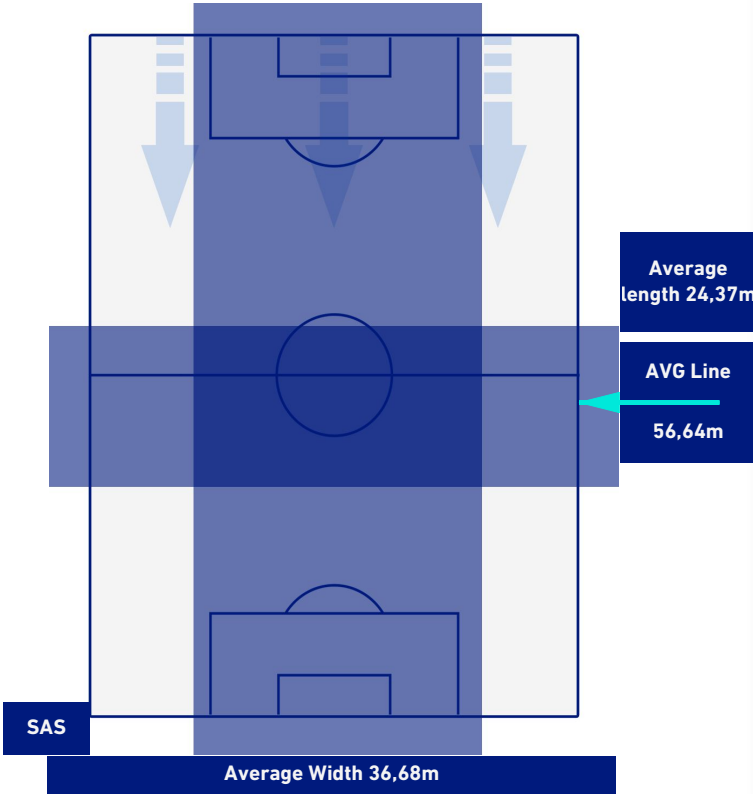
SASSUOLO

1-0

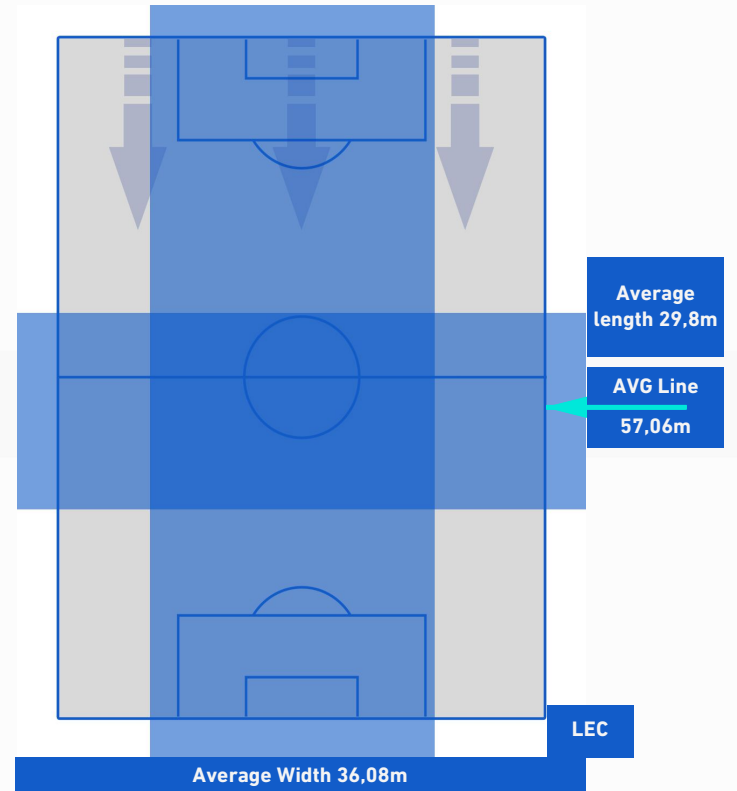
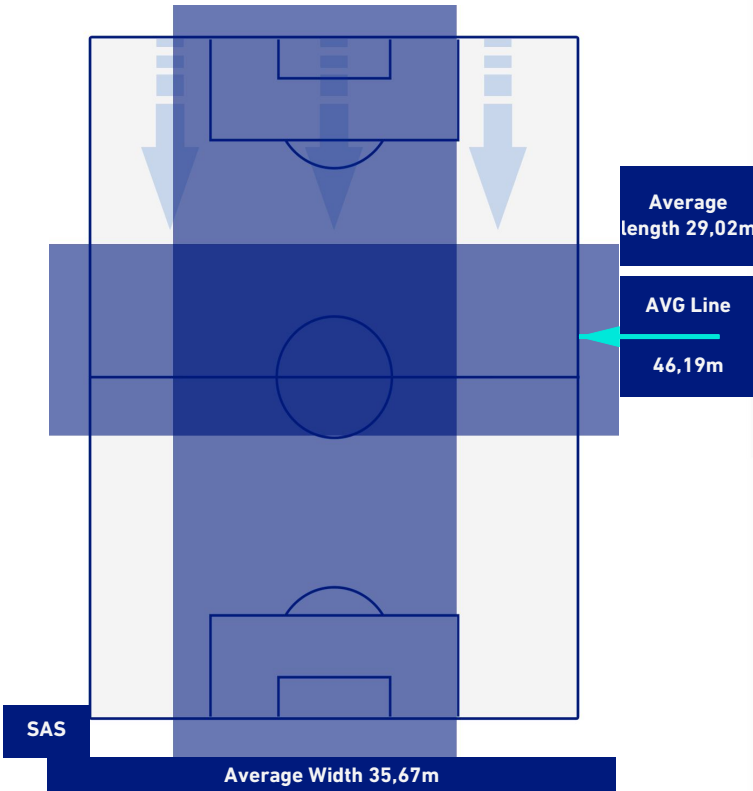
LECCE



TEAM'S DEFENSE POSITION 1st H



TEAM'S DEFENSE POSITION 2nd H





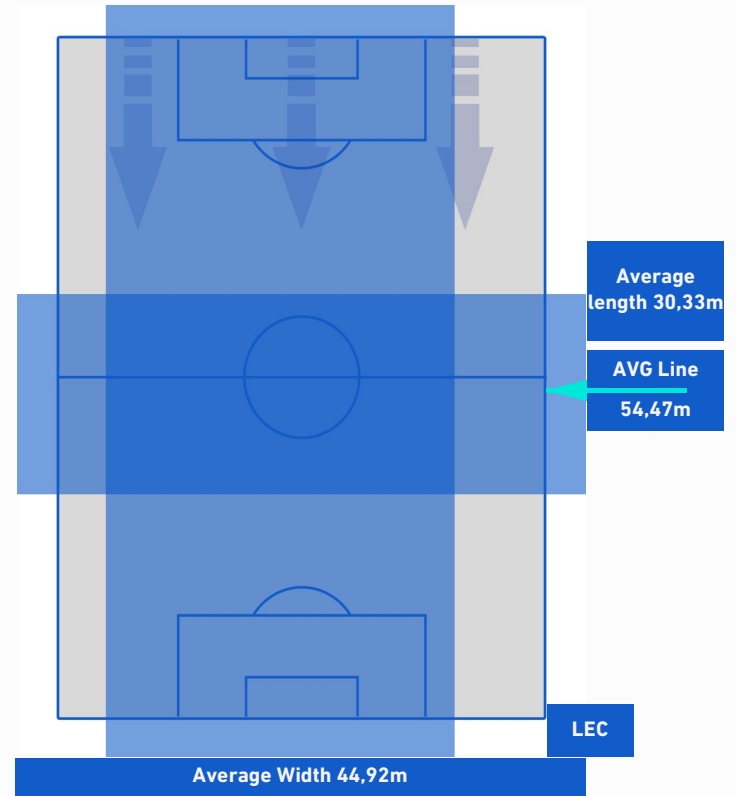
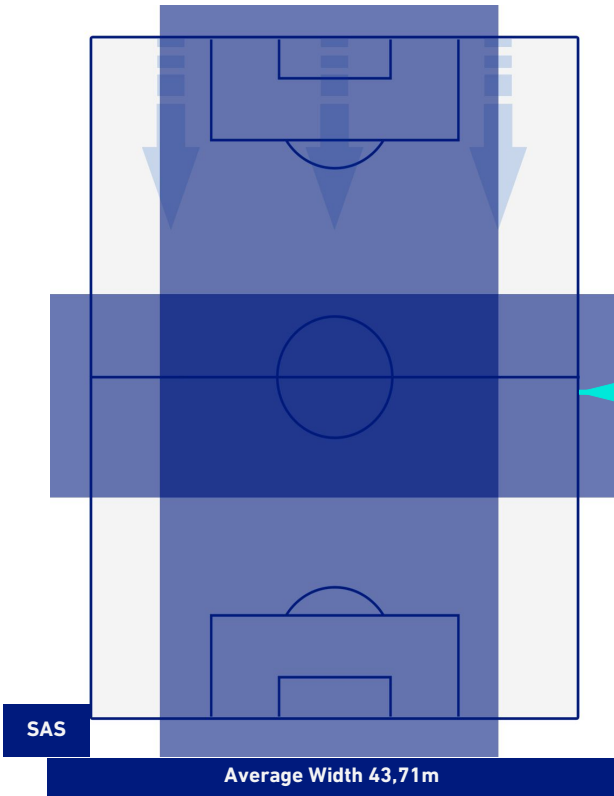
SASSUOLO

1-0

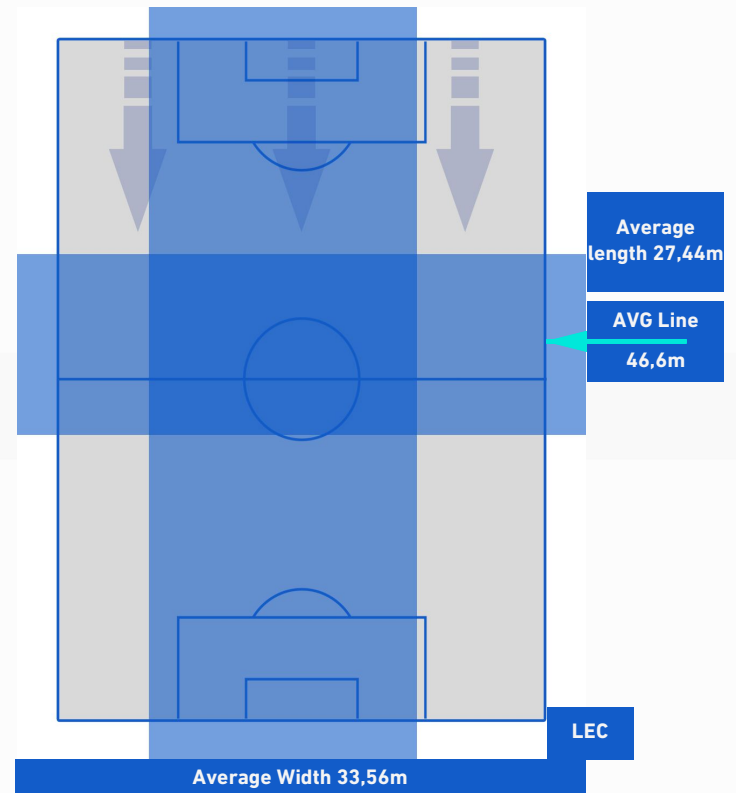
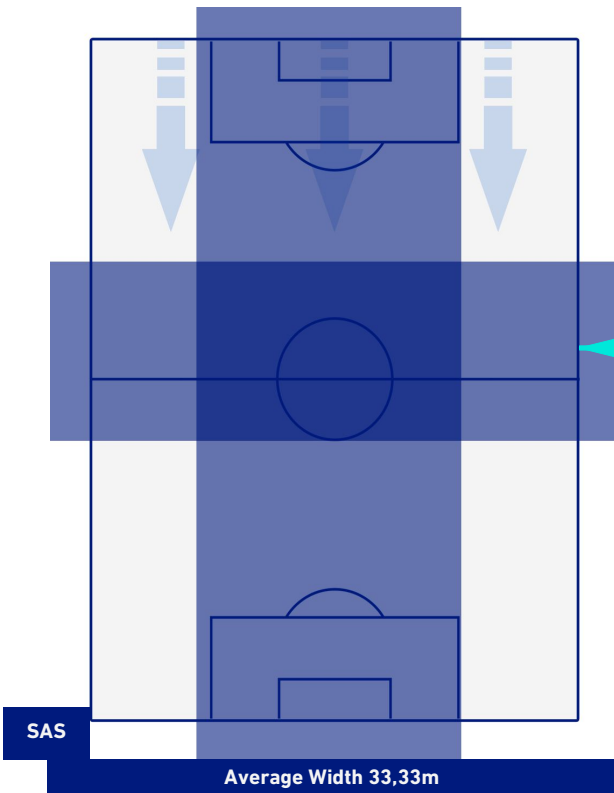
LECCE



TEAM'S DEFENSE POSITION [BALL POSSESSION]



TEAM'S DEFENSE POSITION [NO BALL POSSESSION]



Reggio Emilia 20/08/2022 MAPEI STADIUM - CITTA' DEL TRICOLORE STADIUM - 20:45



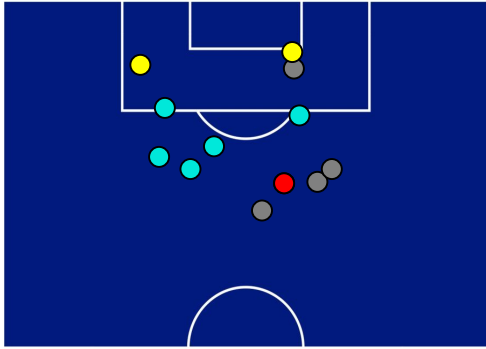
SASSUOLO

1-0

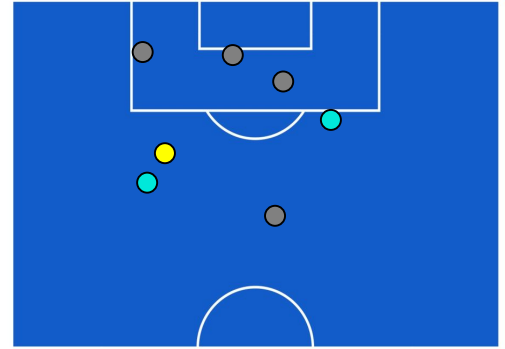
LECCE



ATTEMPTS MAP



1	Goals	0
3	On target	1
4	Off target	4
5	Blocked	2



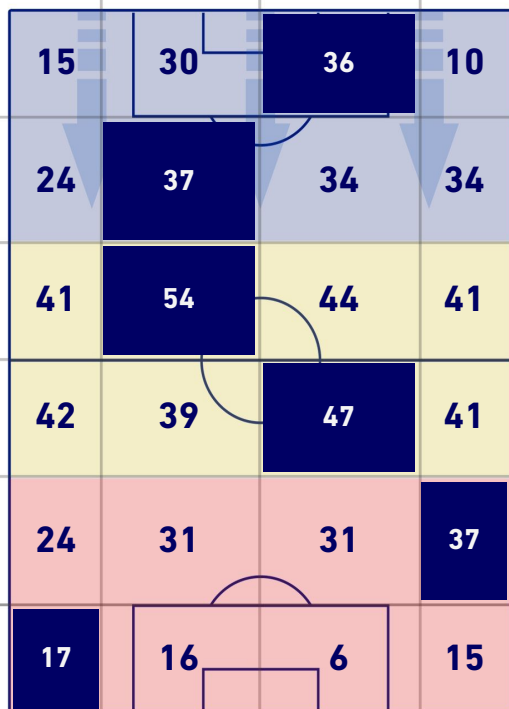
CROSSES COMPLETED MAP



4	Success Cross	8
8	Total Cross	15
50	Precision (%)	53

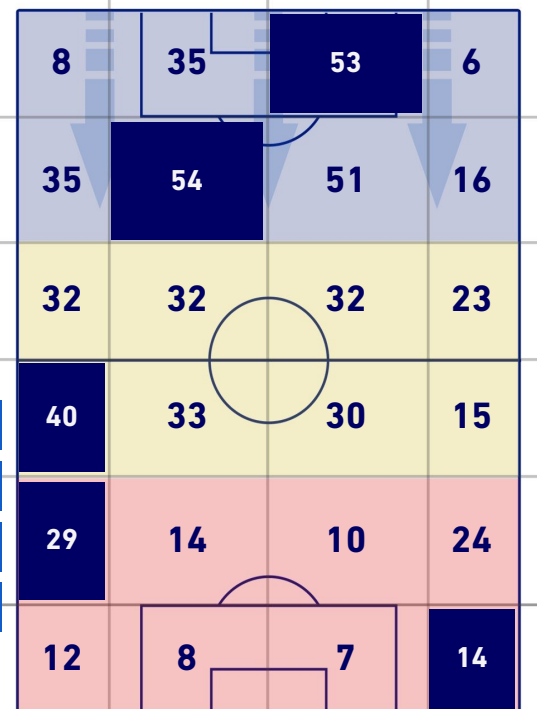


TOUCH MAP



746	Total Balls Played	613
220	DEFENSIVE	258
349	MIDFIELD	237
177	ATTACK ZONE	118

22	Touch in Attacks zone		15
A. PINAMONTI	6	6	A. CEESAY
D. BERARDI	5	2	L. BANDA
D. FRATTESI	5	2	F. BASCHIROTTO



Reggio Emilia 20/08/2022 MAPEI STADIUM - CITTA' DEL TRICOLORE STADIUM - 20:45



SASSUOLO

1-0

LECCE



KEY PLAYERS

DOMENICO BERARDI 10

Position	Forward
Games in Serie A	273
Goals in Serie A	102
Date of birth	01/08/1994
Nationality	ITA

Jog 46% - Run 45% - Sprint 9% **Km 10.102**

4.597	4.585	0.919
-------	-------	-------

Mvp Stats

Minutes Played	90'
Goals	1
Scoring Chances	2
Attempts	5
Attempts on target (goals)	1(1)
Balls Played	65
Passes Completed	26
Passes Completed/Attempted (%)	68%
Key Passes	2
Gained Possessions	2
Fouls Suffered	3

HeatMap



GABRIEL STREFEZZA 27

Position	Midfielder
Games in Serie A	34
Goals in Serie A	1
Date of birth	18/04/1997
Nationality	BRA

Jog 39% - Run 55% - Sprint 6% **Km 9.198**

3.604	5.068	0.525
-------	-------	-------

Mvp Stats

Minutes Played	89'
Scoring Chances	1
Balls Played	47
Passes Completed	20
Passes Completed/Attempted (%)	87%
Key Passes	1
Gained Possessions	4
Fouls Suffered	1

HeatMap





Matchday 2
SERIE A TIM 2022-2023

MATCH REPORT



Reggio Emilia 20/08/2022 MAPEI STADIUM - CITTA' DEL TRICOLORE STADIUM - 20:45



SASSUOLO

1-0

LECCE



The statistics above are to be considered definitive after 24 hours by the end of the game.

The disciplinary sanctions are not official, as they come by the real-time detection during the game and will become official at the time of the homologation by the competent bodies.

In case of dubious attribution goal, the Lega Serie A will officialize the scorer the day after each round of the League.

The ball possession data is scouted live through the television, with an estimate error of 5%.