



Matchday 9
SERIE A TIM 2021-2022

MATCH REPORT



SAMPDORIA



SPEZIA

Genova 22/10/2021
LUIGI FERRARIS STADIUM 20:45



SAMPDORIA

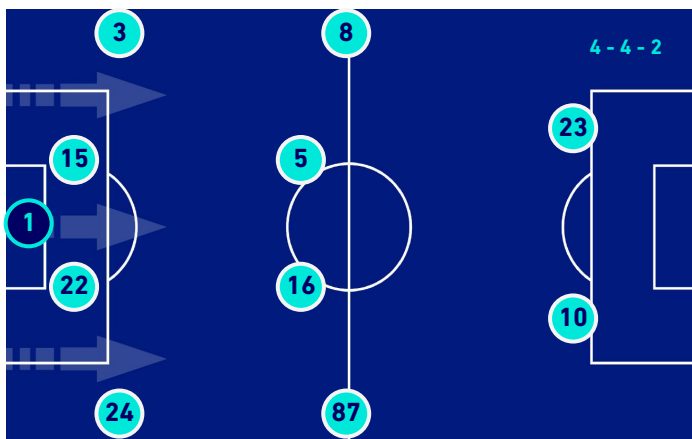
2-1

SPEZIA



Line-ups

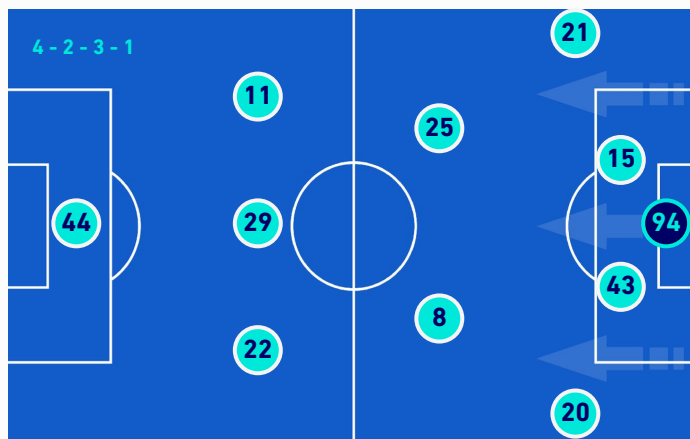
SAMPDORIA	
1	EMIL AUDERO GK
24	BARTOSZ BERESZYNSKI
22	MAYA YOSHIDA
15	OMAR COLLEY
3	TOMMASO AUGELLO
87	ANTONIO CANDREVA
16	KRISTOFFER ASKILDSEN
5	ADRIEN SILVA
8	VALERIO VERRE
10	FRANCESCO CAPUTO
23	MANOLO GABBIADINI



Bench	
30	NICOLA RAVAGLIA
33	WLADIMIRO FALCONE
4	JULIAN CHABOT
9	ERNESTO TORREGROSSA
11	RICCARDO CIERVO
12	FABIO DEPAOLI
19	RADU DRAGUSIN
25	ALEX FERRARI
27	FABIO QUAGLIARELLA
28	GERARD YEPES LAUT
29	NICOLA MURRU
70	SIMONE TRIMBOLI

Coach **ROBERTO D'AVERSA**

SPEZIA	
GK	IVAN PROVEDEL 94
	SALVA FERRER 21
	PETKO HRISTOV 15
	DIMITRIOS NIKOLAOU 43
	SIMONE BASTONI 20
	GIULIO MAGGIORE 25
	VIKTOR KOVALENKO 8
A	EMMANUEL GYASI 11
	EDDIE SALCEDO 29
	JANIS ANTISTE 22
	DAVID STRELEC 44



Bench	
	JEROEN ZOET 1
	PETAR ZOVKO 40
	DANIELE VERDE 10
	SUF PODGOREANU 17
	M'BALA NZOLA 18
	DENNIS DELORIE' 76
	NICOLO' BERTOLA 77

Coach **THIAGO MOTTA**

Referee **MICHAEL FABBRI**
Assistant referee 1 **CIRO CARBONE**
Assistant referee 2 **MARCO SCATRAGLI**

Fourth Official **MATTEO GARIGLIO**
V.A.R.: **SIMONE SOZZA**
A.V.A.R.: **DANIELE BINDONI**

Genova 22/10/2021 LUIGI FERRARIS STADIUM - 20:45



SAMPDORIA

2-1

SPEZIA



Match Events

SAM



SPE

SAMPDORIA

2

- R. DRAGUSIN | V. VERRE 20'
- A. CANDREVA 36'
- (M. GABBIADINI) 36'
- B. BERESZYNSKI 44'
- O. COLLEY 45'+2'
- A. CANDREVA 57'
- J. CHABOT | M. GABBIADINI 70'
- F. QUAGLIARELLA | F. CAPUTO 86'
- A. FERRARI | A. CANDREVA 87'

SPEZIA

1

- 14' P. HRISTOV
- 15' E. GYASI
- 59' D. VERDE | E. GYASI
- 59' M. NZOLA | J. ANTISTE
- 77' S. PODGOREANU | E. SALCEDO
- 90'+5' D. VERDE

Legend

- Goal
- Penalty
- Yellow Card
- Red Card
- Owngoal
- Missed Penalty
- Assist
- Substitution
- Second Yellow Card



SAMPDORIA

2-1

SPEZIA



Game time



Played Time
57%



1st Half - 2nd Half
27'10 - 27'44

BALL POSSESSION

Played Time 54'54



SAMPDORIA

SPEZIA

Total 15'54



DEFENSIVE HALF

SAMPDORIA

ATTACKING HALF

Total 39'00



DEFENSIVE HALF

SPEZIA

ATTACKING HALF

QUARTERS BALL POSSESSION

1st H	0'-15'	2nd H	0'-15'
2'35	6'50	1'39	7'07
	16'-30'		16'-30'
2'12	7'09	3'28	6'19
	31'-47'		31'-49'
3'13	5'11	2'47	6'24

TEAM STATS

	SAM	SPE
Attempts	6	17
Attempts on target (goals)	2(1)	7(1)
Attempts on target from penalty box	1	3
Posts	1	
Attempts off target	3	5
Blocked Shots	1	5
Scoring Chances	4	2
Key Passes	2	1
Assists	1	
Fouls Committed	9	9
Corners		8
Offsides	3	
Cross Successful/Attempted	1/5	11/24
Dribbling	2	5
Passes Completed	170	544
Passes Completed/Attempted (%)	64%	85%
Passes Final Third	42	151
Balls played forward	79	321
Long Passes	20	13
Saves	6	1
Recoveries	66	25



SAMPDORIA

2-1

SPEZIA



PLAYER STATS

SAMPDORIA		M	GC	OG	S	STP	SF	FYC	SYC	RC										
1	E. AUDERO	97'	1		6															
		M	G	OG	A	AT	PT	SC	FS	BP	AS	KP	P	P(%)	PA	R	FYC	SYC	RC	
24	B. BERESZYNSKI	97'			1		1	1		37			14	78	8		1			
22	M. YOSHIDA	97'								37			24	77	6	2				
15	O. COLLEY	97'							2	54			26	70	10	20	1			
3	T. AUGELLO	97'							1	41		1	13	59	8	5				
87	A. CANDREVA	89'	1		2	1		2		45		1	17	65	10	4	1			
16	K. ASKILDSEN	97'							1	26			7	50	4	8				
5	A. SILVA	97'							2	48			20	74	10	10				
8	V. VERRE	20'								6			1	33	1					
10	F. CAPUTO	88'			1				1	2			11	79	8	4				
23	M. GABBIADINI	72'			2	1				28	1		8	53	6	3				
4	J. CHABOT	25'								14			2	100		9				
19	R. DRAGUSIN	77'								29			12	63	2	5				
25	A. FERRARI	8'								3				0		1				
27	F. QUAGLIARELLA	9'								6			2	40		1				

SPEZIA		M	GC	OG	S	STP	SF	FYC	SYC	RC										
94	I. PROVEDEL	97'	2		1															
		M	G	OG	A	AT	PT	SC	FS	BP	AS	KP	P	P(%)	PA	R	FYC	SYC	RC	
21	S. FERRER	97'			3	1			1	75			40	77	22	9				
15	P. HRISTOV	97'							1	83			61	85	29	3	1			
43	D. NIKOLAOU	97'			1				1	130			114	95	60	4				
20	S. BASTONI	97'			1				1	113			66	81	46	5				
25	G. MAGGIORE	97'			1	1				85			65	88	39	3				
8	V. KOVALENKO	97'							2	95			71	89	44	3				
11	E. GYASI	61'		1	2	1				33			21	91	14	1				
29	E. SALCEDO	79'			4	1			1	36		1	21	78	19					
22	J. ANTISTE	61'							1	16			5	63	1					
44	D. STRELEC	97'			1	1			1	42			22	67	15	3				
10	D. VERDE	36'	1		3	2		1	1	43			21	88	19					
17	S. PODGOREANU	18'			1					11			3	60	4					
18	M. NZOLA	36'								14			10	83	9					

Legenda

- FYC First Yellow Card
- OG Owngoal
- BP Balls Played
- SYC Second Yellow Card
- RC Red Card
- G Goals
- GC Goal Conceded
- M Minutes Played
- AS Assists
- FS Fouls Suffered
- A Attempts
- AT Attempts on target
- SC Scoring Chances
- PT Posts
- S Saves
- STP Saves on set piece plays
- SF Saves on free kick
- P(%) Passes Completed/Attempted (%)
- KP Key Passes
- PA Balls played forward
- P Passes Completed
- R Recoveries

PLAYERS RANKING

Attempts			Attempts on target (goals)			Passes Final Third			Scoring Chances		
1	E. SALCEDO	SPE 4	1	D. VERDE	SPE 2	1	S. BASTONI	SPE 27	1	A. CANDREVA	SAM 2
2	S. FERRER	SPE 3	2	A. CANDREVA	SAM 1	2	V. KOVALENKO	SPE 22	2	J. ANTISTE	SPE 1
3	D. VERDE	SPE 3	3	S. FERRER	SPE 1	3	G. MAGGIORE	SPE 21	3	B. BERESZYNSKI	SAM 1
4	A. CANDREVA	SAM 2	4	M. GABBIADINI	SAM 1	4	D. NIKOLAOU	SPE 15	4	F. CAPUTO	SAM 1
5	M. GABBIADINI	SAM 2	5	E. GYASI	SPE 1	5	S. FERRER	SPE 13	5	D. VERDE	SPE 1

Balls Played			Passes Completed			Key Passes			Dribbling		
1	D. NIKOLAOU	SPE 130	1	D. NIKOLAOU	SPE 114	1	T. AUGELLO	SAM 1	1	D. STRELEC	SPE 2
2	S. BASTONI	SPE 113	2	V. KOVALENKO	SPE 71	2	A. CANDREVA	SAM 1	2	B. BERESZYNSKI	SAM 1
3	V. KOVALENKO	SPE 95	3	S. BASTONI	SPE 66	3	E. SALCEDO	SPE 1	3	V. KOVALENKO	SPE 1
4	G. MAGGIORE	SPE 85	4	G. MAGGIORE	SPE 65				4	G. MAGGIORE	SPE 1
5	P. HRISTOV	SPE 83	5	P. HRISTOV	SPE 61				5	M. NZOLA	SPE 1



SAMPDORIA

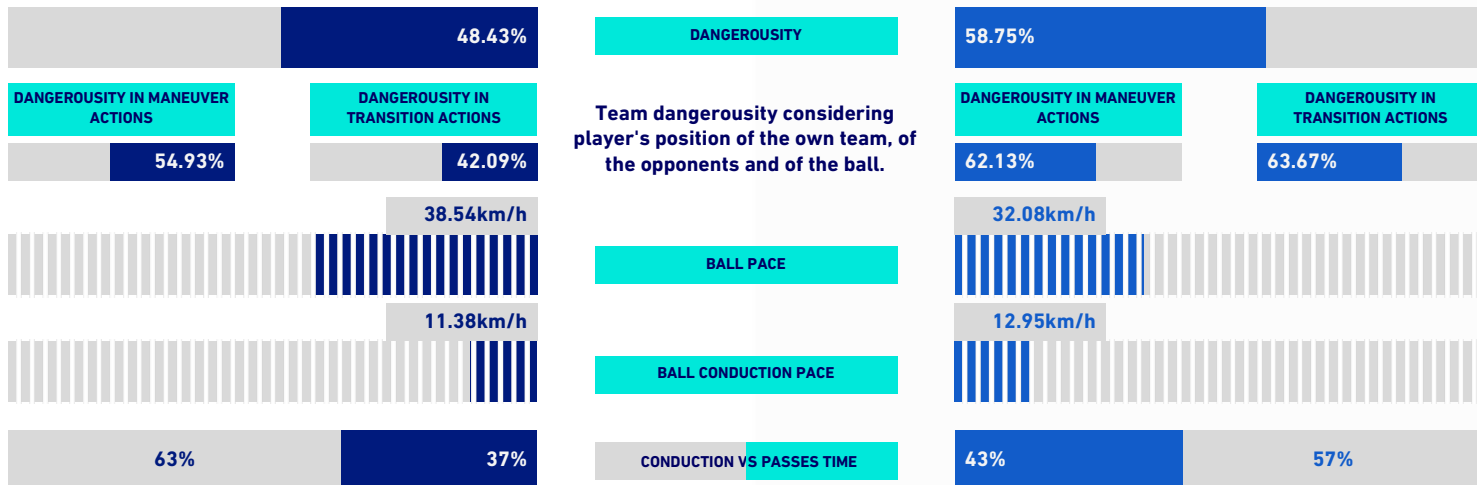
2-1

SPEZIA



VIRTUAL COACH

TEAM INDICATORS



RECORDMEN

PASS GAIN

Number of players overtaken by a vertical pass (only successful passes are considered). It shows how much a player tends to overcome the opponent's pressure lines.

Rank	Player	Value	Rank	Player	Value
1	3 T. AUGELLO	5.10	1	94 I. PROVEDEL	3.80
2	1 E. AUDERO	4.50	2	21 S. FERRER	3.11
3	16 K. ASKILDSEN	4.00	3	20 S. BASTONI	3.09
3	23 M. GABBIADINI	4.00	3	10 D. VERDE	3.09
3	19 R. DRAGUSIN	4.00	5	8 V. KOVALENKO	2.91

PASS RISK

Measures the player's propensity to risk the pass (only successful passes are considered).

Rank	Player	Value	Rank	Player	Value
1	3 T. AUGELLO	42.27%	1	29 E. SALCEDO	29.73%
2	1 E. AUDERO	39.88%	2	94 I. PROVEDEL	26.19%
3	24 B. BERESZYNSKI	37.09%	3	10 D. VERDE	24.33%
4	16 K. ASKILDSEN	36.38%	4	18 M. NZOLA	24.14%
5	23 M. GABBIADINI	26.50%	5	43 D. NIKOLAOU	18.27%

RECEIVED PRESSURE

How much the player with the ball is pressed by the opposite team. It depends on the speed, running direction and distance from the opponent who is at a shorter distance.

Rank	Player	Value	Rank	Player	Value
1	23 M. GABBIADINI	70.53%	1	18 M. NZOLA	77.49%
2	10 F. CAPUTO	67.74%	2	22 J. ANTISTE	71.64%
3	16 K. ASKILDSEN	67.64%	3	29 E. SALCEDO	70.07%
4	5 A. SILVA	63.81%	4	44 D. STRELEC	63.34%
5	87 A. CANDREVA	54.26%	5	25 G. MAGGIORE	61.35%

PASS AVAILABILITY

Ability of a player to get away from opponents to receive the ball. It is computed for all the teammates of the player in possession.

Rank	Player	Value	Rank	Player	Value
1	3 T. AUGELLO	77.63%	1	21 S. FERRER	80.95%
2	15 O. COLLEY	77.57%	2	20 S. BASTONI	80.02%
3	22 M. YOSHIDA	77.41%	3	15 P. HRISTOV	79.27%
4	19 R. DRAGUSIN	73.92%	4	43 D. NIKOLAOU	76.11%
5	5 A. SILVA	71.12%	5	10 D. VERDE	68.10%



SAMPDORIA

2-1

SPEZIA



PLAYERS RANKING [ATHLETICS PERFORMANCE]

Jog - Run - Sprint (km)			
1	ADRIEN SILVA	Total 11.335	
	2.496	8.145	0.694
2	BARTOSZ BERESZYNSKI	Total 11.219	
	3.099	7.139	0.981
3	KRISTOFFER ASKILDSEN	Total 11.019	
	2.86	7.715	0.444
4	ANTONIO CANDREVA	Total 10.423	
	2.785	6.396	1.242
5	TOMMASO AUGELLO	Total 10.124	
	2.712	6.492	0.92

AVG Speed km/h (run)			
1	A. FERRARI	SAM	7.6
2	F. QUAGLIARELLA	SAM	7.6
3	A. CANDREVA	SAM	7.4
4	V. VERRE	SAM	7.4
5	M. GABBIADINI	SAM	7.2

AVG Speed km/h (sprint)			
1	O. COLLEY	SAM	32.56
2	R. DRAGUSIN	SAM	31.99
3	A. CANDREVA	SAM	31.91
4	K. ASKILDSEN	SAM	31.67

TEAM STATS [ATHLETICS PERFORMANCE]

Distance Covered (km)	106.934
AVG Speed (km/h)	6.5

Jog-Run-Sprint (km 106.934)		
29.435	69.643	7.856

Jog - Run - Sprint (km)			
1	DAVID STRELEC	Total 11.407	
	2.947	7.53	0.93
2	SALVA FERRER	Total 11.282	
	2.916	7.187	1.179
3	SIMONE BASTONI	Total 11.188	
	2.767	7.44	0.981
4	GIULIO MAGGIORE	Total 10.81	
	2.822	7.531	0.457
5	VIKTOR KOVALENKO	Total 10.771	
	2.609	7.62	0.542

AVG Speed km/h (run)			
1	J. ANTISTE	SPE	7.4
2	D. VERDE	SPE	7.4
3	S. FERRER	SPE	7.2
4	D. STRELEC	SPE	7.2
5	S. BASTONI	SPE	7

AVG Speed km/h (sprint)			
1	E. GYASI	SPE	32.98
2	P. HRISTOV	SPE	31.03
3	J. ANTISTE	SPE	31.01
4	D. STRELEC	SPE	30.94

Distance Covered (km)	108.196
AVG Speed (km/h)	6.5

Jog-Run-Sprint (km 108.196)		
28.011	72.224	7.961

Fitness data displayed in the report are the ones collected in real time and could be different to the post-processed ones, delivered to the coaching staff

Genova 22/10/2021 LUIGI FERRARIS STADIUM - 20:45



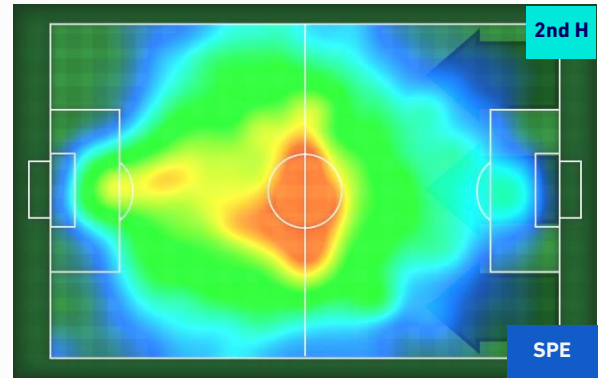
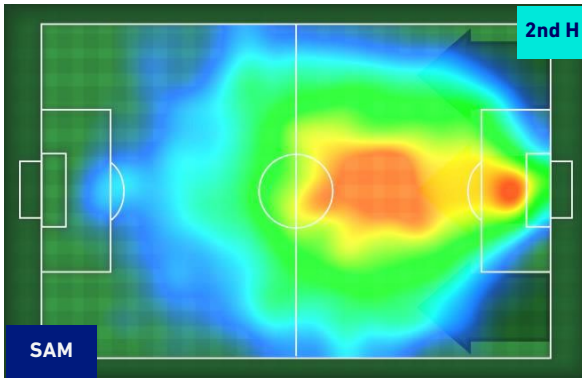
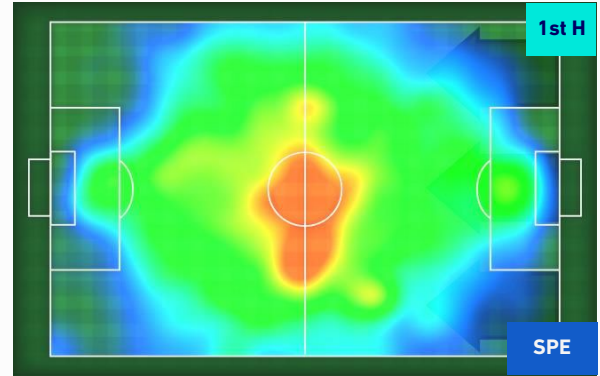
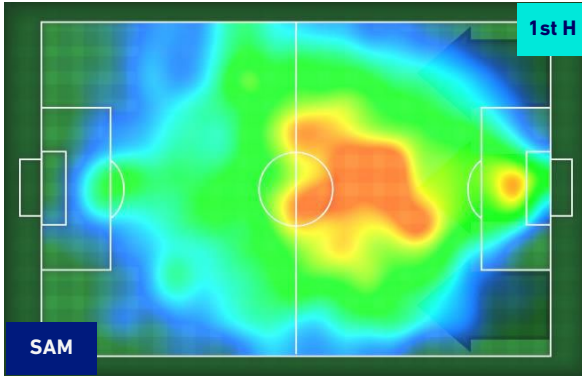
SAMPDORIA

2-1

SPEZIA



HEATMAP





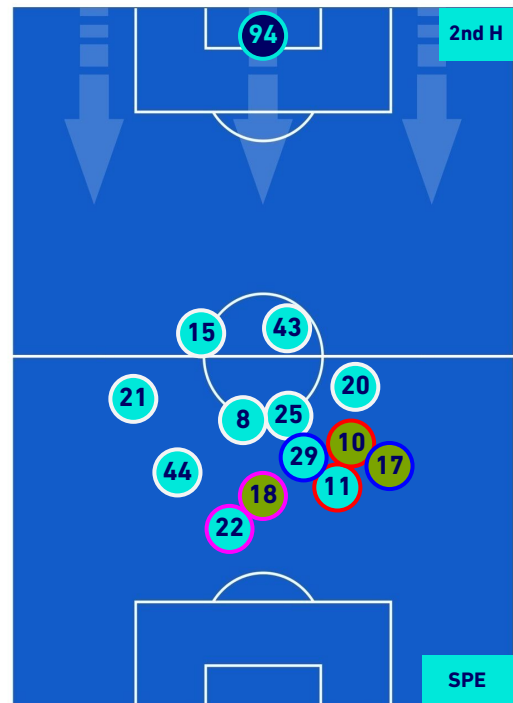
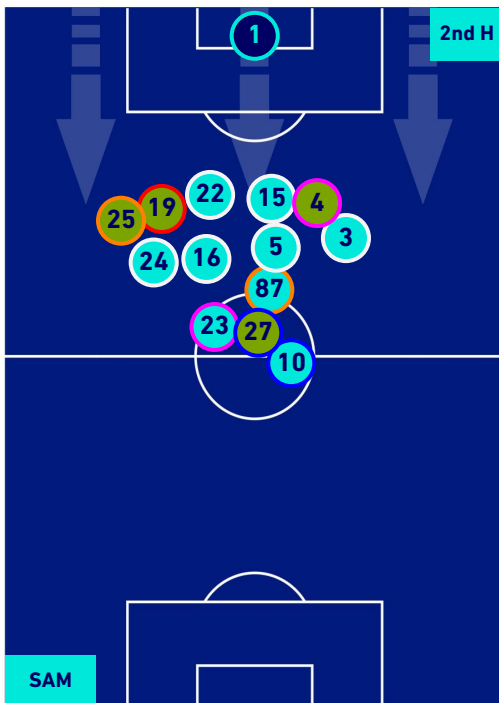
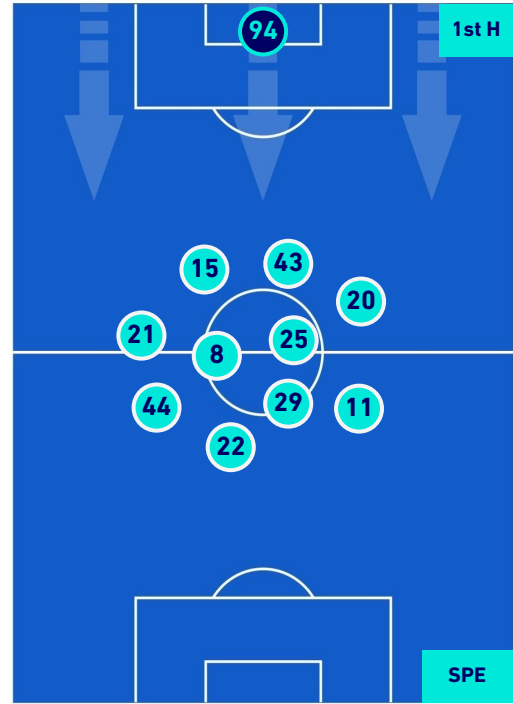
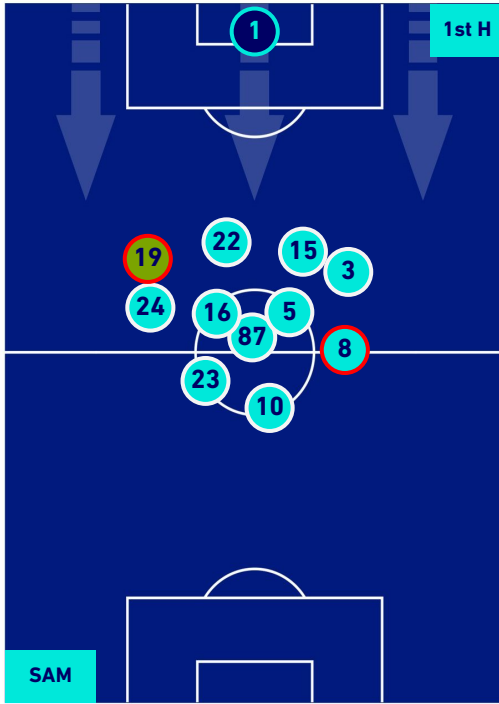
SAMPDORIA

2-1

SPEZIA



PLAYERS AVERAGE POSITION



- Legend:
- 1st Substitution ● Player in
 - 2nd Substitution ● Player in
 - 3rd Substitution ● Player in
 - 4th Substitution ● Player in
 - Player out
 - Player out
 - Player out
 - Player out

- Player in / out
- Player in / out
- Player in / out
- Player in / out
-
-
-
-

Genova 22/10/2021 LUIGI FERRARIS STADIUM - 20:45



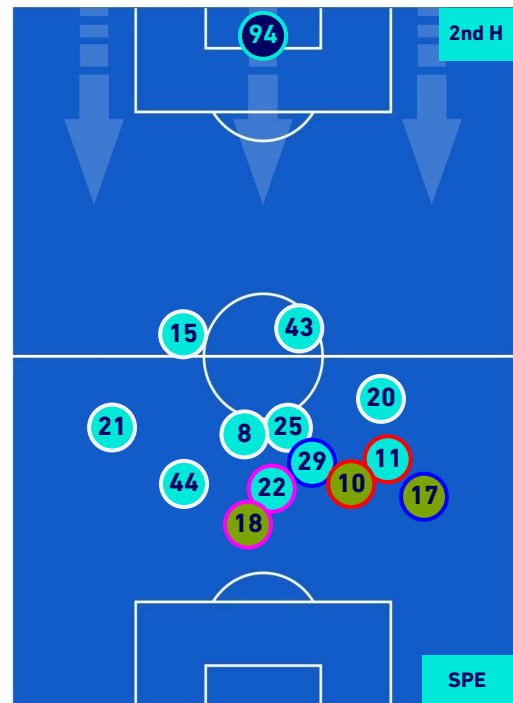
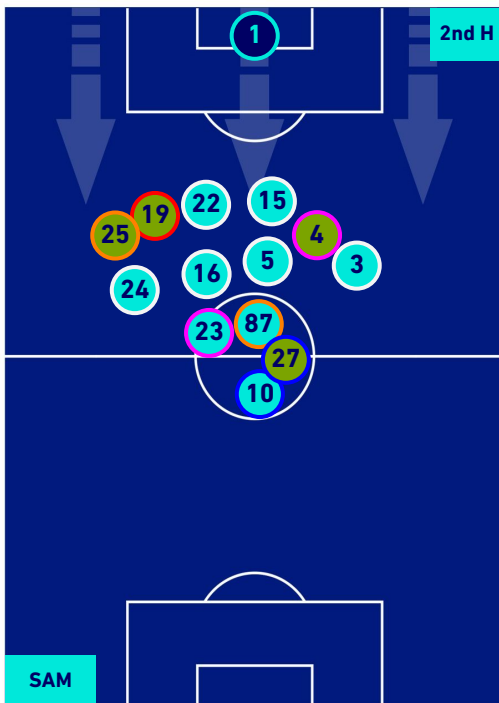
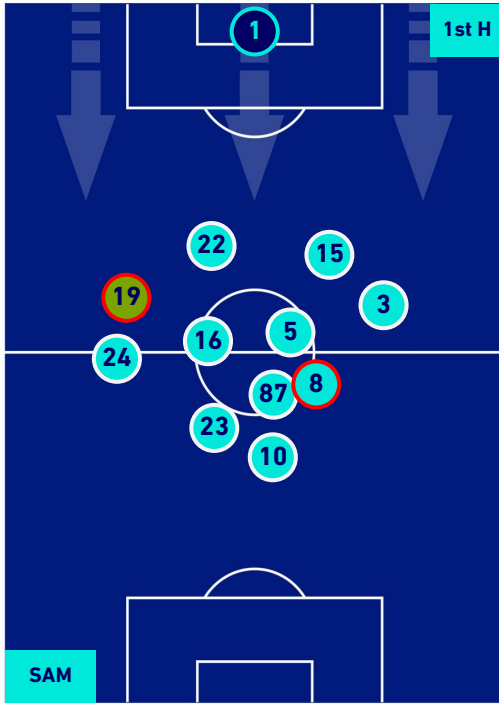
SAMPDORIA

2-1

SPEZIA



PLAYERS AVERAGE POSITION [BALL POSSESSION]



Legend:

- 1st Substitution ● Player in
- 2nd Substitution ● Player in
- 3rd Substitution ● Player in
- 4th Substitution ● Player in

- Player out
- Player out
- Player out
- Player out

- Player in / out
- Player in / out
- Player in / out

-
-
-
-

Genova 22/10/2021 LUIGI FERRARIS STADIUM - 20:45



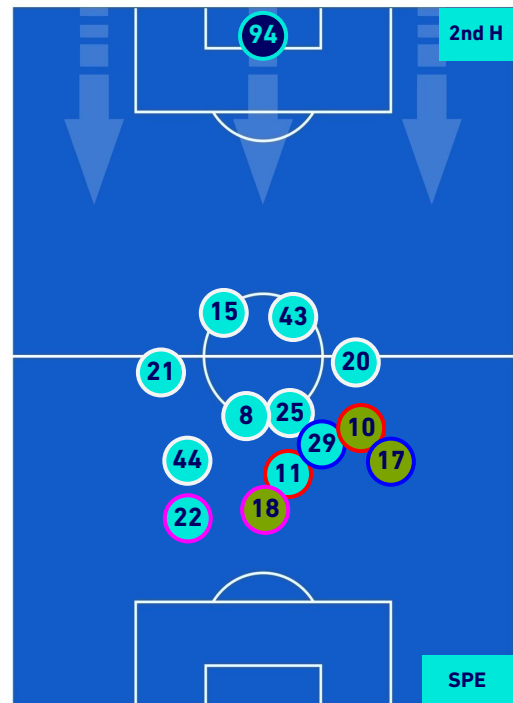
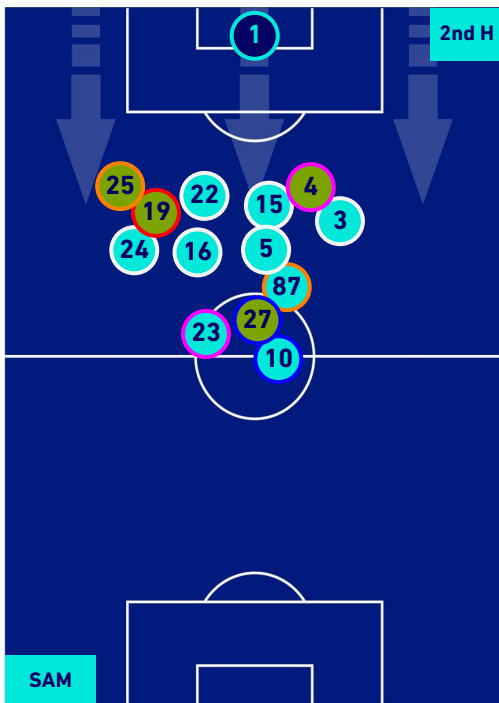
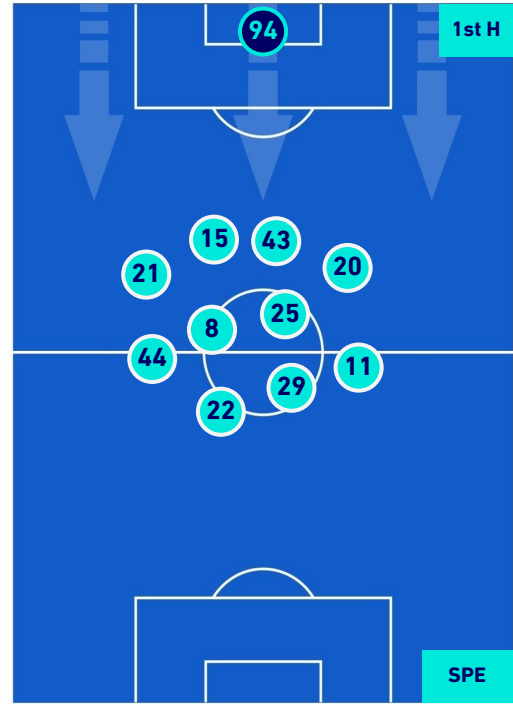
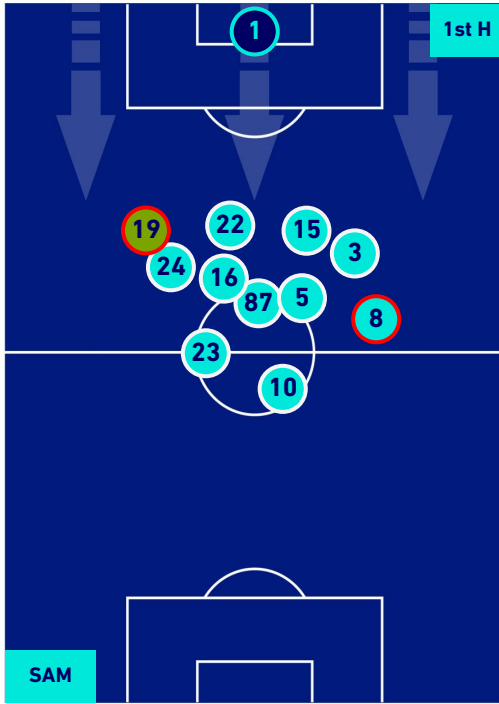
SAMPDORIA

2-1

SPEZIA



PLAYERS AVERAGE POSITION [NO BALL POSSESSION]



Legend:

- 1st Substitution ● Player in
- 2nd Substitution ● Player in
- 3rd Substitution ● Player in
- 4th Substitution ● Player in

- Player out
- Player out
- Player out
- Player out

- Player in / out
- Player in / out
- Player in / out
- Player in / out

-
-
-
-



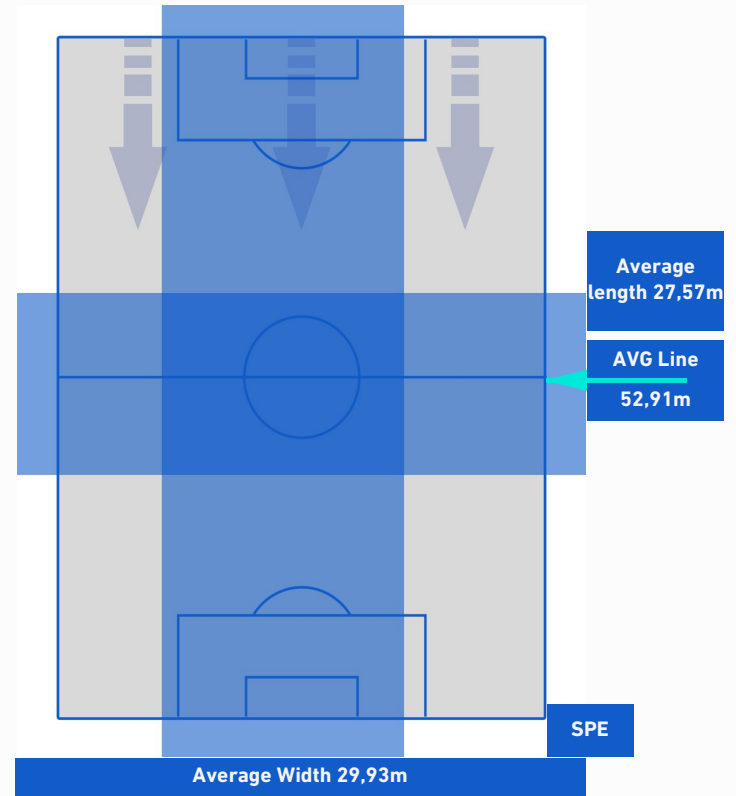
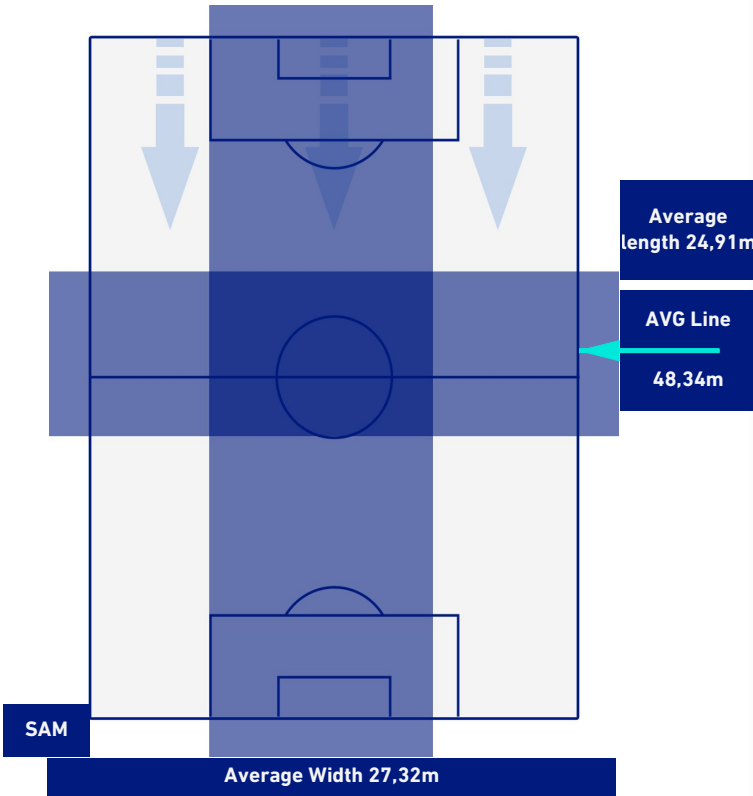
SAMPDORIA

2-1

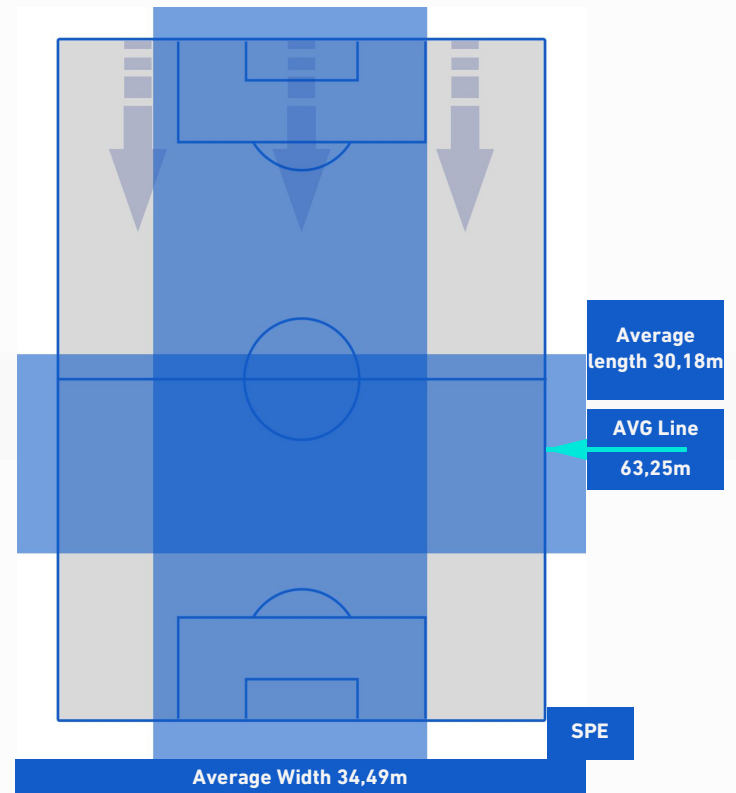
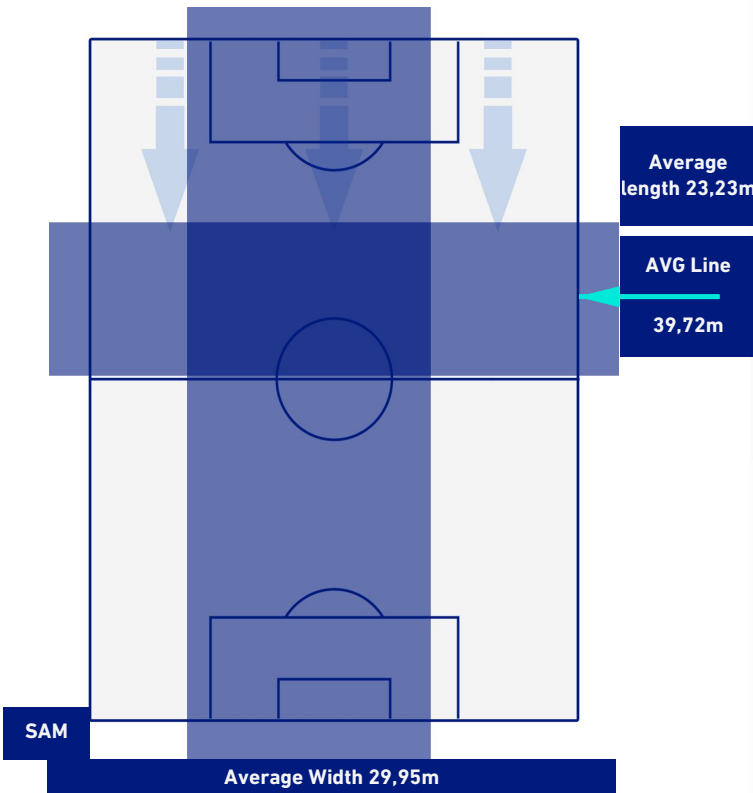
SPEZIA



TEAM'S DEFENSE POSITION 1st H



TEAM'S DEFENSE POSITION 2nd H





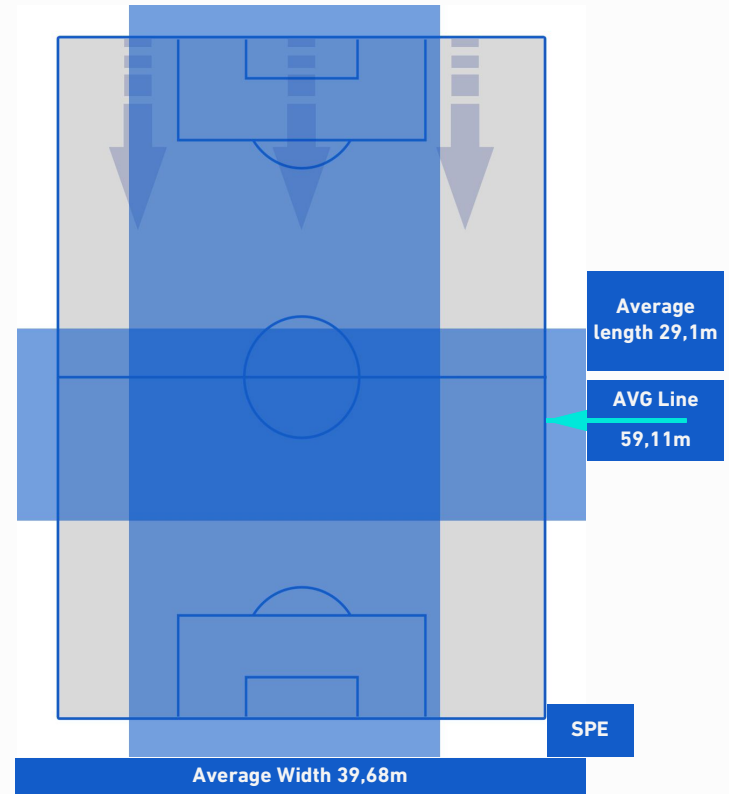
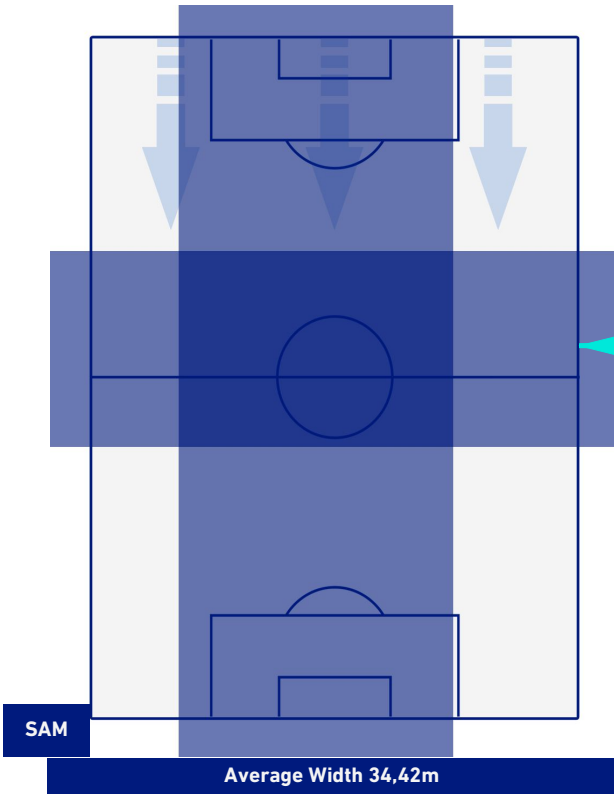
SAMPDORIA

2-1

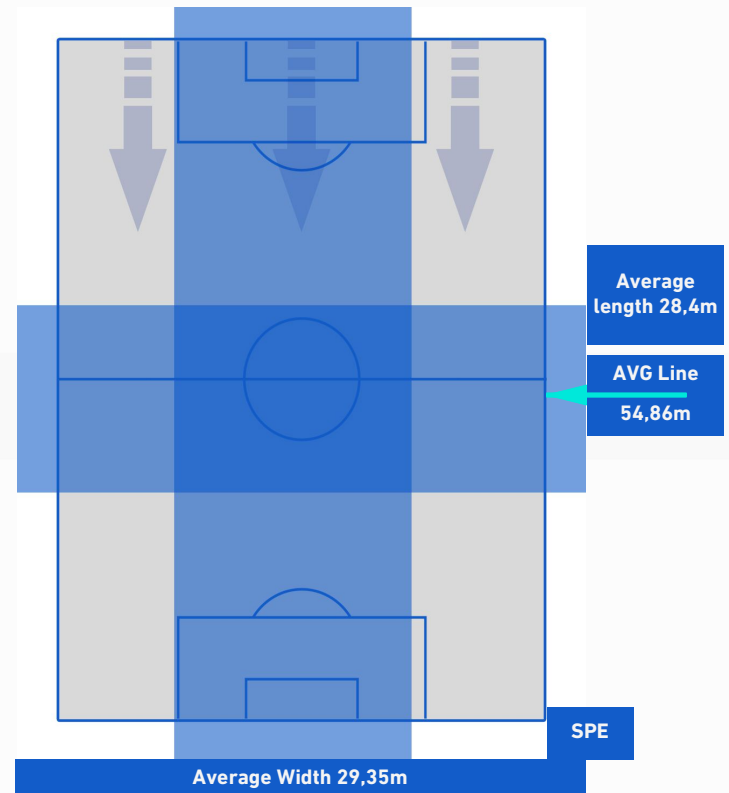
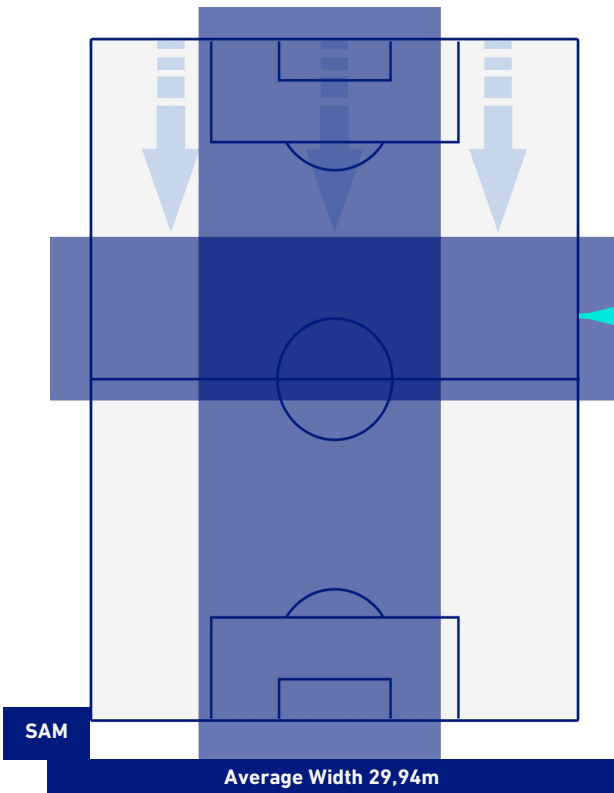
SPEZIA



TEAM'S DEFENSE POSITION [BALL POSSESSION]



TEAM'S DEFENSE POSITION [NO BALL POSSESSION]



Genova 22/10/2021 LUIGI FERRARIS STADIUM - 20:45



SAMPDORIA

2-1

SPEZIA



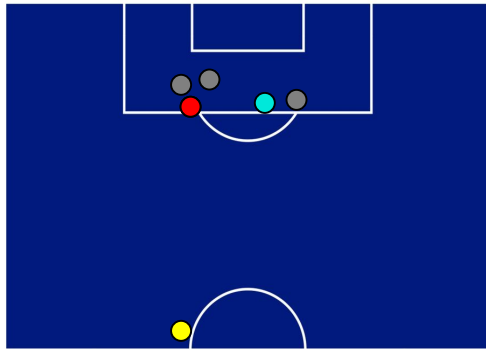
ATTACKING PLAYS MAP



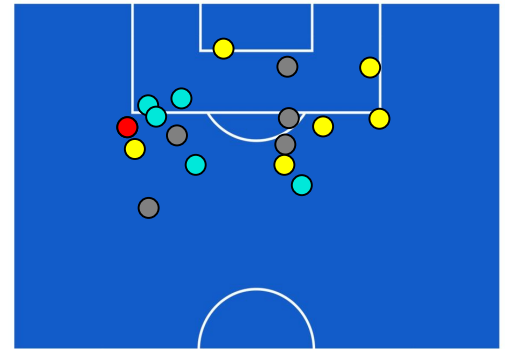
23	Attacking Plays	36
6	Total Attempts	17
4	Scoring Chances	2



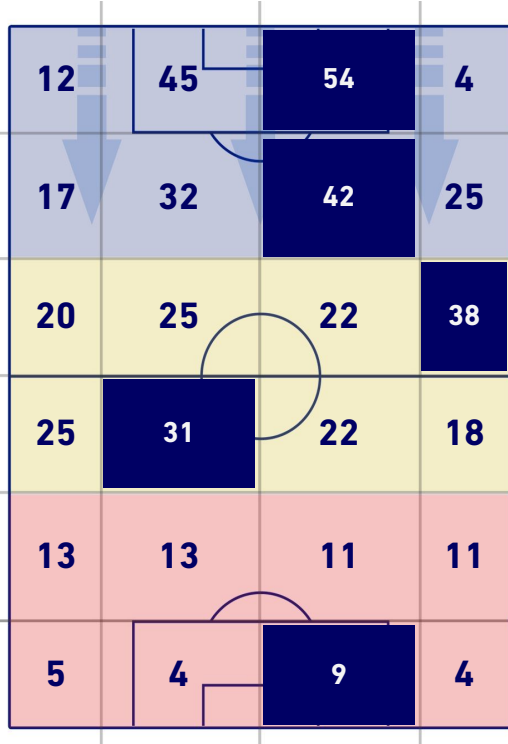
ATTEMPTS MAP



1	Goals	1
2	On target	7
3	Off target	5
1	Blocked	5

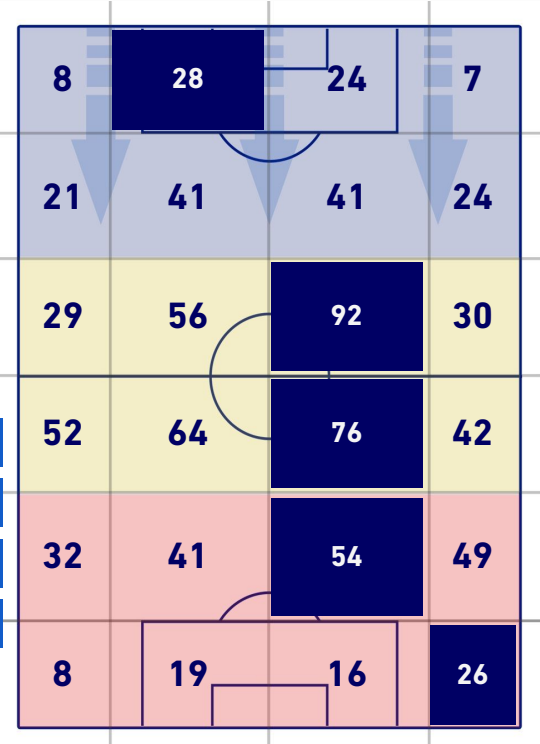


TOUCH MAP



502	Total Balls Played	880
231	DEFENSIVE	194
201	MIDFIELD	441
70	ATTACK ZONE	245

13	Touch in Attacks zone	35	
F. CAPUTO	4	8	D. STRELEC
A. CANDREVA	3	5	E. GYASI
B. BERESZYNSKI	2	5	G. MAGGIORE





SAMPDORIA

2-1

SPEZIA



KEY PLAYERS

ANTONIO CANDREVA 87

Position	Midfielder
Games in Serie A	405
Goals in Serie A	68
Date of birth	28/02/1987
Nationality	ITA

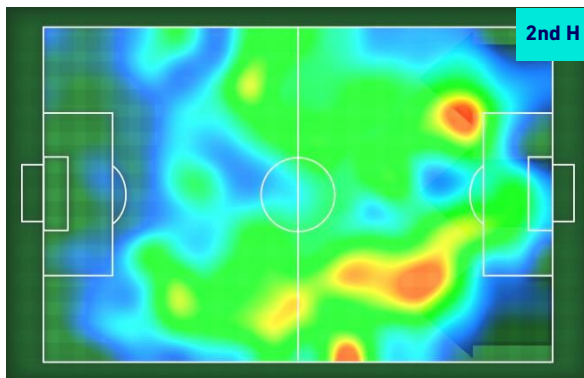
Jog 27% - Run 61% - Sprint 12% **Km 10.423**

2.785	6.396	1.242
-------	-------	-------

Mvp Stats

Minutes Played	89'
Goals	1
Scoring Chances	2
Attempts	2
Attempts on target (goals)	1(1)
Balls Played	45
Passes Completed	17
Passes Completed/Attempted (%)	65%
Key Passes	1
Recoveries	4

HeatMap



DANIELE VERDE 10

Position	Forward
Games in Serie A	72
Goals in Serie A	10
Date of birth	20/06/1996
Nationality	ITA

Jog 23% - Run 65% - Sprint 12% **Km 4.182**

0.976	2.711	0.495
-------	-------	-------

Mvp Stats

Minutes Played	36'
Goals	1
Scoring Chances	1
Attempts	3
Attempts on target (goals)	2(1)
Balls Played	43
Passes Completed	21
Passes Completed/Attempted (%)	88%
Fouls Suffered	1

HeatMap



Genova 22/10/2021 LUIGI FERRARIS STADIUM - 20:45



SAMPDORIA

2-1

SPEZIA



The statistics above are to be considered definitive after 24 hours by the end of the game.

The disciplinary sanctions are not official, as they come by the real-time detection during the game and will become official at the time of the homologation by the competent bodies.

In case of dubious attribution goal, the Lega Serie A will officialize the scorer the day after each round of the League.

The ball possession data is scouted live through the television, with an estimate error of 5%.