



Matchday 26  
SERIE A TIM 2021-2022

# MATCH REPORT



**SAMPDORIA**



**EMPOLI**

Genova 19/02/2022  
LUIGI FERRARIS STADIUM 15:00

Genova 19/02/2022 LUIGI FERRARIS STADIUM - 15:00



**SAMPDORIA**

**2-0**

**EMPOLI**



## Line-ups

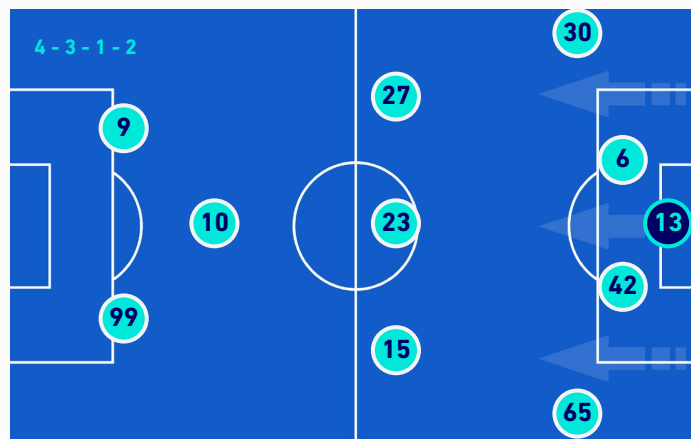
| SAMPDORIA |                       |
|-----------|-----------------------|
| 33        | WLADIMIRO FALCONE GK  |
| 24        | BARTOSZ BERESZYNSKI   |
| 25        | ALEX FERRARI          |
| 15        | OMAR COLLEY           |
| 29        | NICOLA MURRU          |
| 87        | ANTONIO CANDREVA      |
| 6         | ALBIN EKDAL           |
| 2         | MORTEN THORSBY        |
| 11        | ABDELHAMID SABIRI     |
| 27        | FABIO QUAGLIARELLA x2 |
| 10        | FRANCESCO CAPUTO      |



| Bench |                     |
|-------|---------------------|
| 1     | EMIL AUDERO         |
| 30    | NICOLA RAVAGLIA     |
| 3     | TOMMASO AUGELLO     |
| 7     | VLADYSLAV SUPRIAHA  |
| 13    | ANDREA CONTI        |
| 14    | RONALDO VIEIRA      |
| 26    | GIANGIACOMO MAGNANI |
| 37    | DANIELE MONTEVAGO   |
| 70    | SIMONE TRIMBOLI     |
| 88    | TOMAS RINCON        |

Coach **MARCO GIAMPAOLO**

| EMPOLI |                      |
|--------|----------------------|
| GK     | GUGLIELMO VICARIO 13 |
|        | PETAR STOJANOVIC 30  |
|        | SIMONE ROMAGNOLI 6   |
|        | MATTIA VITI 42       |
|        | FABIANO PARISI 65    |
|        | SZYMON ZURKOWSKI 27  |
|        | KRISTJAN ASLLANI 23  |
|        | MARCO BENASSI 15     |
|        | NEDIM BAJRAMI 10     |
|        | PATRICK CUTRONE 9    |
|        | ANDREA PINAMONTI 99  |



| Bench |                          |
|-------|--------------------------|
|       | SAMIR UJKANI 1           |
|       | JACOPO FURLAN 22         |
|       | LEO STULAC 5             |
|       | LIAM HENDERSON 8         |
|       | FEDERICO DI FRANCESCO 11 |
|       | ANDREA LA MANTIA 19      |
|       | RICCARDO FIAMOZZI 20     |
|       | LIBERATO CACACE 21       |
|       | FILIPPO BANDINELLI 25    |
|       | LORENZO TONELLI 26       |
|       | SEBASTIANO LUPERTO 33    |
|       | ARDIAN ISMAJLI 34        |

Coach **AURELIO ANDREAZZOLI**

Referee **ANTONIO RAPUANO**  
Assistant referee 1 **ALESSANDRO GIALLATINI**  
Assistant referee 2 **VITO MASTRODONATO**

Fourth Official **ALBERTO SANTORO**  
V.A.R.: **ROSARIO ABISSO**  
A.V.A.R.: **PIETRO DEI GIUDICI**

Genova 19/02/2022 LUIGI FERRARIS STADIUM - 15:00



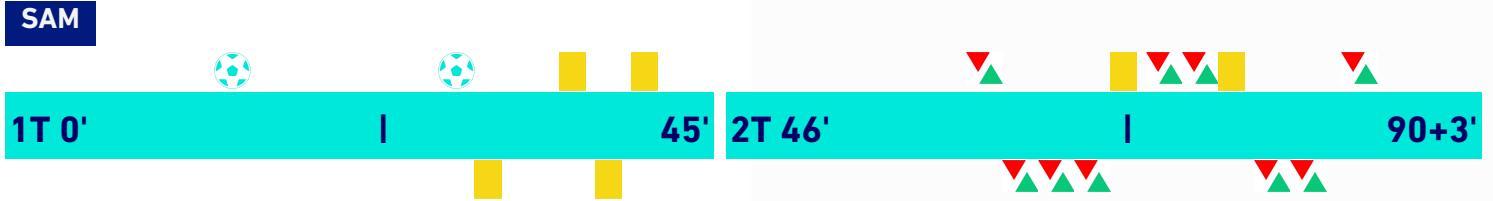
**SAMPDORIA**

**2-0**

**EMPOLI**



## Match Events



| SAMPDORIA                  |     | EMPOLI |                              |
|----------------------------|-----|--------|------------------------------|
| <b>2</b>                   |     |        | <b>0</b>                     |
| F. QUAGLIARELLA            | 14' |        |                              |
| (A. CANDREVA)              | 14' |        |                              |
| F. QUAGLIARELLA            | 29' |        |                              |
| (B. BERESZYNSKI)           | 29' |        |                              |
|                            |     | 31'    | N. BAJRAMI                   |
| B. BERESZYNSKI             | 42' |        |                              |
|                            |     | 43'    | K. ASLLANI                   |
| A. EKDAL                   | 45' |        |                              |
| A. CONTI   F. QUAGLIARELLA | 61' |        |                              |
|                            |     | 63'    | A. LA MANTIA   P. CUTRONE    |
|                            |     | 63'    | L. HENDERSON   M. BENASSI    |
|                            |     | 63'    | F. BANDINELLI   S. ZURKOWSKI |
| A. CANDREVA                | 65' |        |                              |
| T. RINCON   A. SABIRI      | 69' |        |                              |
| T. AUGELLO   N. MURRU      | 70' |        |                              |
| A. CONTI                   | 74' |        |                              |
|                            |     | 75'    | F. DI FRANCESCO   N. BAJRAMI |
| R. VIEIRA   A. EKDAL       | 86' |        |                              |
|                            |     | 78'    | L. CACACE   F. PARISI        |

**Legend**

- Goal
- Penalty
- Yellow Card
- Red Card
- Owngoal
- Missed Penalty
- Assist
- Substitution
- Second Yellow Card



**SAMPDORIA**

**2-0**

**EMPOLI**



## Game time



Played Time  
55%



1st Half - 2nd Half  
23'54 - 27'08

## BALL POSSESSION

Played Time 51'02



Total 21'25



Total 29'37



## QUARTERS BALL POSSESSION

| 1st H | 0'-15'  | 2nd H | 0'-15'  |
|-------|---------|-------|---------|
| 3'35  | 4'06    | 3'41  | 4'47    |
|       | 16'-30' |       | 16'-30' |
| 3'58  | 3'51    | 1'40  | 5'35    |
|       | 31'-45' |       | 31'-47' |
| 3'05  | 5'19    | 5'26  | 5'59    |

## TEAM STATS

|                                     | SAM  | EMP  |
|-------------------------------------|------|------|
| Attempts                            | 8    | 10   |
| Attempts on target (goals)          | 3(2) | 2(0) |
| Attempts on target from penalty box | 3    | 1    |
| Attempts off target                 | 3    | 3    |
| Blocked Shots                       | 2    | 5    |
| Scoring Chances                     | 8    | 7    |
| Key Passes                          | 6    | 7    |
| Assists                             | 2    |      |
| Fouls Committed                     | 15   | 12   |
| Corners                             | 3    | 6    |
| Offsides                            | 3    | 1    |
| Cross Successful/Attempted          | 2/6  | 1/20 |
| Dribbling                           | 6    | 12   |
| Passes Completed                    | 275  | 397  |
| Passes Completed/Attempted (%)      | 77%  | 84%  |
| Passes Final Third                  | 63   | 110  |
| Balls played forward                | 127  | 225  |
| Long Passes                         | 32   | 19   |
| Saves                               | 2    | 1    |
| Recoveries                          | 55   | 60   |



SAMPDORIA

2-0

EMPOLI



## PLAYER STATS

| SAMPDORIA |                 | M   | GC | OG | S | STP | SF | FYC | SYC | RC |    |    |    |      |    |    |     |     |    |
|-----------|-----------------|-----|----|----|---|-----|----|-----|-----|----|----|----|----|------|----|----|-----|-----|----|
| 33        | W. FALCONE      | 93' |    |    | 2 |     |    |     |     |    |    |    |    |      |    |    |     |     |    |
| SAMPDORIA |                 | M   | G  | OG | A | AT  | PT | SC  | FS  | BP | AS | KP | P  | P(%) | PA | R  | FYC | SYC | RC |
| 24        | B. BERESZYNSKI  | 93' |    |    |   |     |    | 2   | 1   | 67 | 1  | 1  | 33 | 77   | 17 | 6  | 1   |     |    |
| 25        | A. FERRARI      | 93' |    |    |   |     |    |     | 1   | 33 |    |    | 13 | 65   | 2  | 5  |     |     |    |
| 15        | O. COLLEY       | 93' |    |    | 1 |     |    |     |     | 35 |    |    | 16 | 73   | 2  | 5  |     |     |    |
| 29        | N. MURRU        | 70' |    |    |   |     |    | 1   | 1   | 46 |    | 1  | 19 | 73   | 10 | 8  |     |     |    |
| 87        | A. CANDREVA     | 93' |    |    | 2 |     |    | 2   | 1   | 81 | 1  | 1  | 48 | 86   | 29 | 10 | 1   |     |    |
| 6         | A. EKDAL        | 86' |    |    |   |     |    |     | 2   | 43 |    |    | 21 | 78   | 3  | 5  | 1   |     |    |
| 2         | M. THORSBY      | 93' |    |    |   |     |    |     |     | 47 |    |    | 31 | 84   | 13 | 2  |     |     |    |
| 11        | A. SABIRI       | 69' |    |    | 1 |     |    | 1   | 3   | 34 |    | 1  | 15 | 79   | 10 | 3  |     |     |    |
| 27        | F. QUAGLIARELLA | 61' | 2  |    | 3 | 2   |    | 2   |     | 31 |    | 2  | 14 | 70   | 8  | 3  |     |     |    |
| 10        | F. CAPUTO       | 93' |    |    | 1 | 1   |    |     | 1   | 23 |    |    | 13 | 76   | 8  | 4  |     |     |    |
| 3         | T. AUGELLO      | 23' |    |    |   |     |    |     |     | 15 |    |    | 6  | 67   | 1  | 1  |     |     |    |
| 13        | A. CONTI        | 32' |    |    |   |     |    |     |     | 13 |    |    | 11 | 100  | 8  |    | 1   |     |    |
| 14        | R. VIEIRA       | 7'  |    |    |   |     |    |     |     | 5  |    |    | 1  | 100  |    | 1  |     |     |    |
| 88        | T. RINCON       | 24' |    |    |   |     |    |     |     | 21 |    |    | 15 | 88   | 11 | 2  |     |     |    |

| EMPOLI |                 | M   | GC | OG | S | STP | SF | FYC | SYC | RC |    |    |    |      |    |    |     |     |    |
|--------|-----------------|-----|----|----|---|-----|----|-----|-----|----|----|----|----|------|----|----|-----|-----|----|
| 13     | G. VICARIO      | 93' | 2  |    | 1 |     |    |     |     |    |    |    |    |      |    |    |     |     |    |
| EMPOLI |                 | M   | G  | OG | A | AT  | PT | SC  | FS  | BP | AS | KP | P  | P(%) | PA | R  | FYC | SYC | RC |
| 30     | P. STOJANOVIC   | 93' |    |    |   |     |    |     | 1   | 88 |    |    | 44 | 75   | 27 | 10 |     |     |    |
| 6      | S. ROMAGNOLI    | 93' |    |    |   |     |    |     |     | 67 |    |    | 49 | 80   | 15 | 7  |     |     |    |
| 42     | M. VITI         | 93' |    |    |   |     |    | 1   | 2   | 74 |    | 1  | 54 | 92   | 19 | 8  |     |     |    |
| 65     | F. PARISI       | 78' |    |    |   |     |    |     | 3   | 68 |    |    | 25 | 83   | 16 | 4  |     |     |    |
| 27     | S. ZURKOWSKI    | 63' |    |    | 1 |     |    | 3   | 2   | 49 |    | 3  | 26 | 90   | 20 | 3  |     |     |    |
| 23     | K. ASLLANI      | 93' |    |    | 1 | 1   |    |     | 1   | 83 |    |    | 63 | 88   | 34 | 9  | 1   |     |    |
| 15     | M. BENASSI      | 63' |    |    | 1 |     |    |     |     | 29 |    |    | 14 | 88   | 10 |    |     |     |    |
| 10     | N. BAJRAMI      | 75' |    |    | 3 | 1   |    |     |     | 58 |    |    | 31 | 84   | 24 | 8  | 1   |     |    |
| 9      | P. CUTRONE      | 63' |    |    | 1 |     |    |     | 1   | 23 |    |    | 9  | 75   | 5  | 1  |     |     |    |
| 99     | A. PINAMONTI    | 93' |    |    |   |     |    | 1   | 2   | 21 |    | 1  | 11 | 69   | 9  | 1  |     |     |    |
| 8      | L. HENDERSON    | 30' |    |    |   |     |    |     |     | 27 |    |    | 16 | 89   | 14 | 1  |     |     |    |
| 11     | F. DI FRANCESCO | 18' |    |    | 1 |     |    |     |     | 15 |    |    | 9  | 90   | 8  | 1  |     |     |    |
| 19     | A. LA MANTIA    | 30' |    |    | 1 |     |    | 1   | 1   | 10 |    | 1  | 6  | 75   | 4  | 2  |     |     |    |
| 21     | L. CACACE       | 15' |    |    |   |     |    |     |     | 17 |    |    | 11 | 100  | 8  | 2  |     |     |    |
| 25     | F. BANDINELLI   | 30' |    |    | 1 |     |    | 1   |     | 24 |    | 1  | 14 | 82   | 11 | 3  |     |     |    |

## Legenda

|      |                                |
|------|--------------------------------|
| FYC  | First Yellow Card              |
| OG   | Owngoal                        |
| BP   | Balls Played                   |
| SYC  | Second Yellow Card             |
| RC   | Red Card                       |
| G    | Goals                          |
| GC   | Goal Conceded                  |
| M    | Minutes Played                 |
| AS   | Assists                        |
| FS   | Fouls Suffered                 |
| A    | Attempts                       |
| AT   | Attempts on target             |
| SC   | Scoring Chances                |
| PT   | Posts                          |
| S    | Saves                          |
| STP  | Saves on set piece plays       |
| SF   | Saves on free kick             |
| P(%) | Passes Completed/Attempted (%) |
| KP   | Key Passes                     |
| PA   | Balls played forward           |
| P    | Passes Completed               |
| R    | Recoveries                     |

## PLAYERS RANKING

| Attempts     |                 |        | Attempts on target (goals) |                 |        | Passes Final Third |                 |        | Scoring Chances |                 |       |
|--------------|-----------------|--------|----------------------------|-----------------|--------|--------------------|-----------------|--------|-----------------|-----------------|-------|
| 1            | N. BAJRAMI      | EMP 3  | 1                          | F. QUAGLIARELLA | SAM 2  | 1                  | N. BAJRAMI      | EMP 19 | 1               | S. ZURKOWSKI    | EMP 3 |
| 2            | F. QUAGLIARELLA | SAM 3  | 2                          | K. ASLLANI      | EMP 1  | 2                  | A. CANDREVA     | SAM 19 | 2               | B. BERESZYNSKI  | SAM 2 |
| 3            | A. CANDREVA     | SAM 2  | 3                          | N. BAJRAMI      | EMP 1  | 3                  | K. ASLLANI      | EMP 15 | 3               | A. CANDREVA     | SAM 2 |
| 4            | K. ASLLANI      | EMP 1  | 4                          | F. CAPUTO       | SAM 1  | 4                  | S. ZURKOWSKI    | EMP 14 | 4               | F. QUAGLIARELLA | SAM 2 |
| 5            | F. BANDINELLI   | EMP 1  |                            |                 |        | 5                  | F. PARISI       | EMP 11 | 5               | F. BANDINELLI   | EMP 1 |
| Balls Played |                 |        | Passes Completed           |                 |        | Key Passes         |                 |        | Dribbling       |                 |       |
| 1            | P. STOJANOVIC   | EMP 88 | 1                          | K. ASLLANI      | EMP 63 | 1                  | S. ZURKOWSKI    | EMP 3  | 1               | N. BAJRAMI      | EMP 3 |
| 2            | K. ASLLANI      | EMP 83 | 2                          | M. VITI         | EMP 54 | 2                  | F. QUAGLIARELLA | SAM 2  | 2               | P. STOJANOVIC   | EMP 2 |
| 3            | A. CANDREVA     | SAM 81 | 3                          | S. ROMAGNOLI    | EMP 49 | 3                  | F. BANDINELLI   | EMP 1  | 3               | S. ZURKOWSKI    | EMP 2 |
| 4            | M. VITI         | EMP 74 | 4                          | A. CANDREVA     | SAM 48 | 4                  | B. BERESZYNSKI  | SAM 1  | 4               | F. BANDINELLI   | EMP 1 |
| 5            | F. PARISI       | EMP 68 | 5                          | P. STOJANOVIC   | EMP 44 | 5                  | A. CANDREVA     | SAM 1  | 5               | M. BENASSI      | EMP 1 |



**SAMPDORIA**

**2-0**

**EMPOLI**



## PLAYERS RANKING [ATHLETICS PERFORMANCE]

| Jog - Run - Sprint (km) |                     |              |       |
|-------------------------|---------------------|--------------|-------|
| 1                       | MORTEN THORSBY      | Total 11.768 |       |
|                         | 3.757               | 6.755        | 1.254 |
| 2                       | ANTONIO CANDREVA    | Total 11.63  |       |
|                         | 4.059               | 5.793        | 1.777 |
| 3                       | ALBIN EKDAL         | Total 10.215 |       |
|                         | 3.307               | 6.175        | 0.733 |
| 4                       | BARTOSZ BERESZYNSKI | Total 10.137 |       |
|                         | 3.783               | 5.627        | 0.726 |
| 5                       | FRANCESCO CAPUTO    | Total 9.64   |       |
|                         | 3.769               | 4.954        | 0.915 |

| AVG Speed km/h (run) |             |     |       |
|----------------------|-------------|-----|-------|
| 1                    | A. CANDREVA | SAM | 10.84 |
| 2                    | A. CONTI    | SAM | 10.68 |
| 3                    | A. SABIRI   | SAM | 10.66 |
| 4                    | M. THORSBY  | SAM | 10.66 |
| 5                    | A. EKDAL    | SAM | 10.65 |

| AVG Speed km/h (sprint) |             |     |       |
|-------------------------|-------------|-----|-------|
| 1                       | A. FERRARI  | SAM | 32.29 |
| 2                       | F. CAPUTO   | SAM | 32.21 |
| 3                       | N. MURRU    | SAM | 32.01 |
| 4                       | O. COLLEY   | SAM | 31.4  |
| 5                       | A. CANDREVA | SAM | 30.82 |

| Jog - Run - Sprint (km) |                  |              |       |
|-------------------------|------------------|--------------|-------|
| 1                       | KRISTJAN ASLLANI | Total 11.693 |       |
|                         | 3.2              | 7.784        | 0.709 |
| 2                       | MATTIA VITI      | Total 10.538 |       |
|                         | 3.722            | 6.19         | 0.625 |
| 3                       | PETAR STOJANOVIC | Total 10.454 |       |
|                         | 3.905            | 5.699        | 0.849 |
| 4                       | SIMONE ROMAGNOLI | Total 9.662  |       |
|                         | 3.831            | 5.238        | 0.591 |
| 5                       | FABIANO PARISI   | Total 9.209  |       |
|                         | 2.981            | 5.208        | 1.02  |

| AVG Speed km/h (run) |                 |     |       |
|----------------------|-----------------|-----|-------|
| 1                    | F. DI FRANCESCO | EMP | 11.01 |
| 2                    | K. ASLLANI      | EMP | 10.79 |
| 3                    | N. BAJRAMI      | EMP | 10.77 |
| 4                    | L. HENDERSON    | EMP | 10.69 |
| 5                    | F. PARISI       | EMP | 10.55 |

| AVG Speed km/h (sprint) |              |     |       |
|-------------------------|--------------|-----|-------|
| 1                       | S. ROMAGNOLI | EMP | 32.81 |
| 2                       | A. PINAMONTI | EMP | 32.54 |
| 3                       | M. VITI      | EMP | 31.91 |
| 4                       | S. ZURKOWSKI | EMP | 31.6  |
| 5                       | F. PARISI    | EMP | 31.04 |

## TEAM STATS [ATHLETICS PERFORMANCE]

|                       |         |
|-----------------------|---------|
| Distance Covered (km) | 105.478 |
| AVG Speed (km/h)      | 6.88    |

| Jog-Run-Sprint (km 105.478) |        |       |
|-----------------------------|--------|-------|
| 38.924                      | 56.648 | 9.905 |

|                       |        |
|-----------------------|--------|
| Distance Covered (km) | 107.23 |
| AVG Speed (km/h)      | 6.97   |

| Jog-Run-Sprint (km 107.23) |       |      |
|----------------------------|-------|------|
| 36.76                      | 61.12 | 9.35 |

Fitness data displayed in the report are the ones collected in real time and could be different to the post-processed ones, delivered to the coaching staff

|                      |                           |             |             |                |            |                            |                  |
|----------------------|---------------------------|-------------|-------------|----------------|------------|----------------------------|------------------|
| <b>Jog:</b>          | 0-7 km/h                  | <b>Run:</b> | 7.1-15 km/h | <b>Sprint:</b> | 15.1+ km/h | <b>Jog + Run + Sprint:</b> | Distance covered |
| <b>TOP Sprinter:</b> | Top four players per team |             |             |                |            |                            |                  |



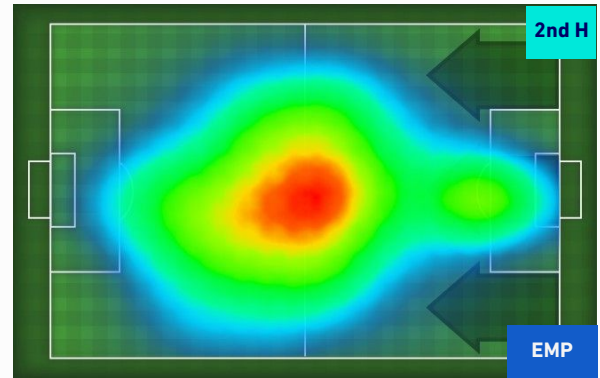
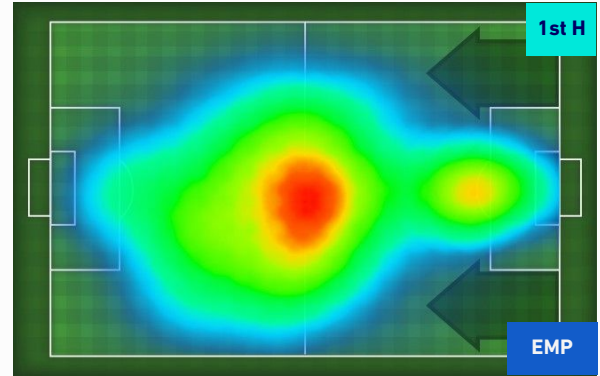
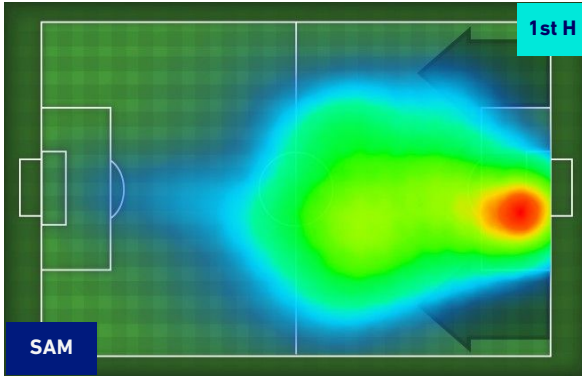
SAMPDORIA

2-0

EMPOLI



## HEATMAP





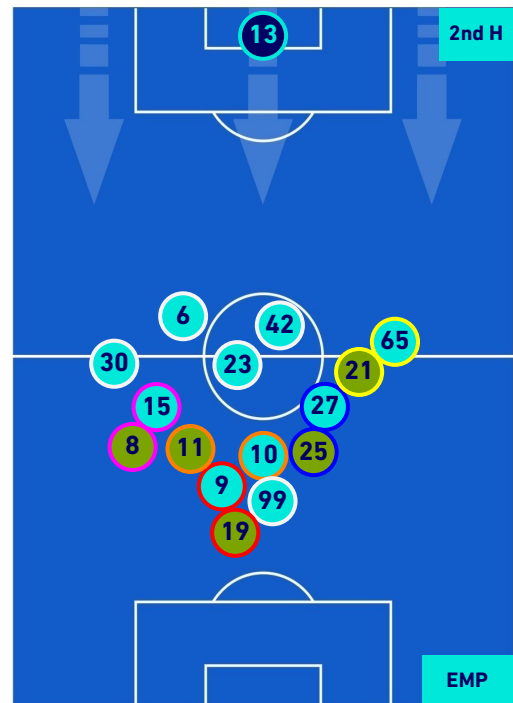
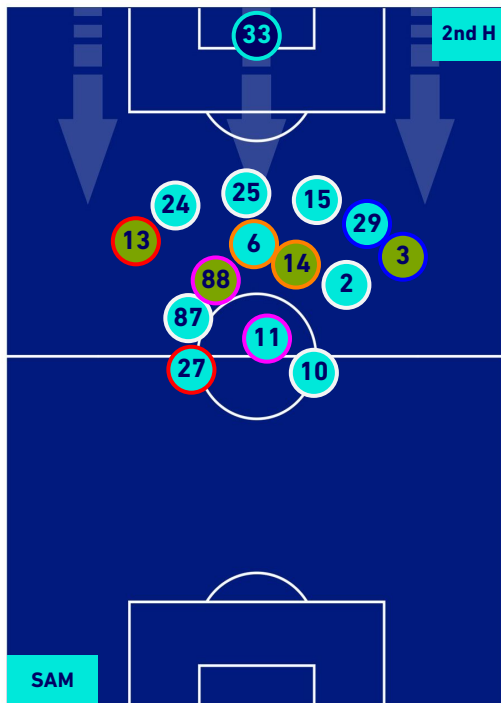
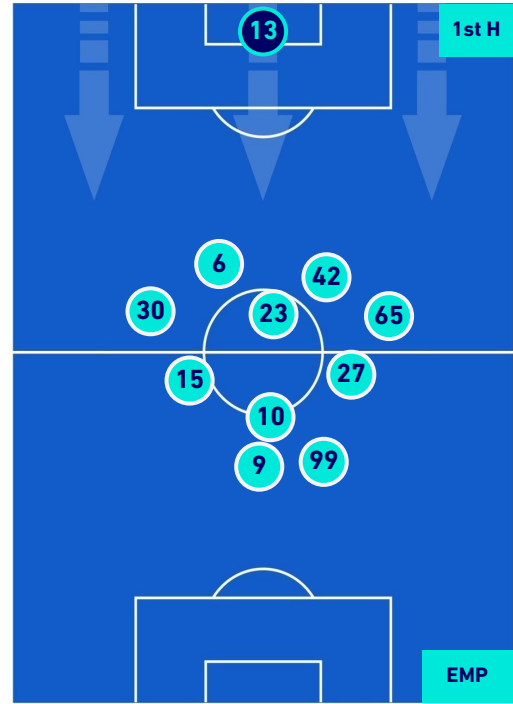
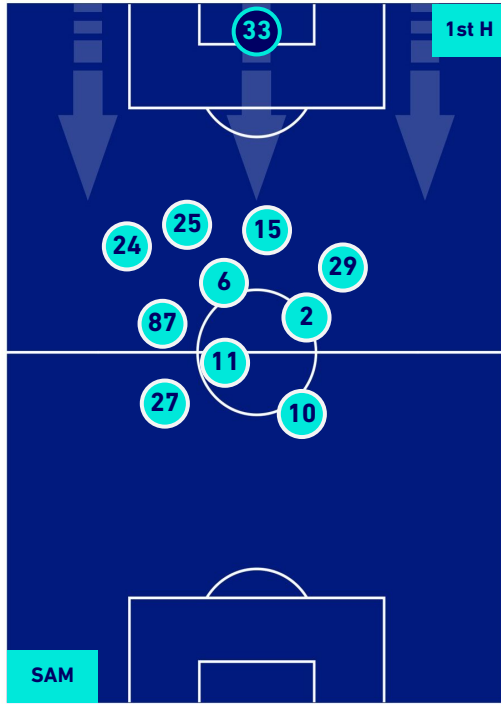
SAMPDORIA

2-0

EMPOLI



## PLAYERS AVERAGE POSITION



- Legend:
- 1st Substitution: Player in (Red circle), Player out (Cyan circle)
  - 2nd Substitution: Player in (Pink circle), Player out (Cyan circle)
  - 3rd Substitution: Player in (Blue circle), Player out (Cyan circle)
  - 4th Substitution: Player in (Orange circle), Player out (Cyan circle)
  - 5th Substitution: Player in (Yellow circle), Player out (Cyan circle)

- Player in / out (Red circle)
- Player in / out (Pink circle)
- Player in / out (Blue circle)
- Player in / out (Orange circle)
- Player in / out (Yellow circle)





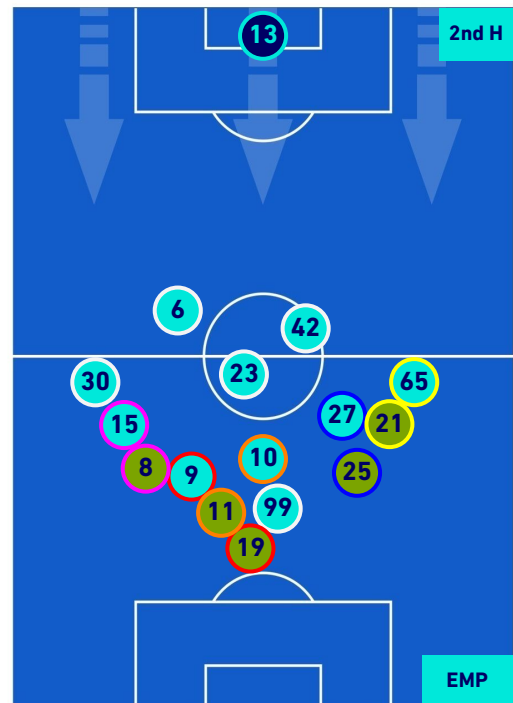
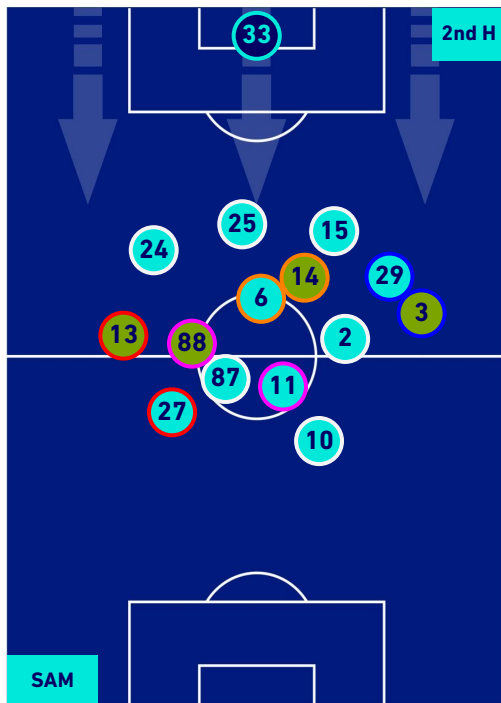
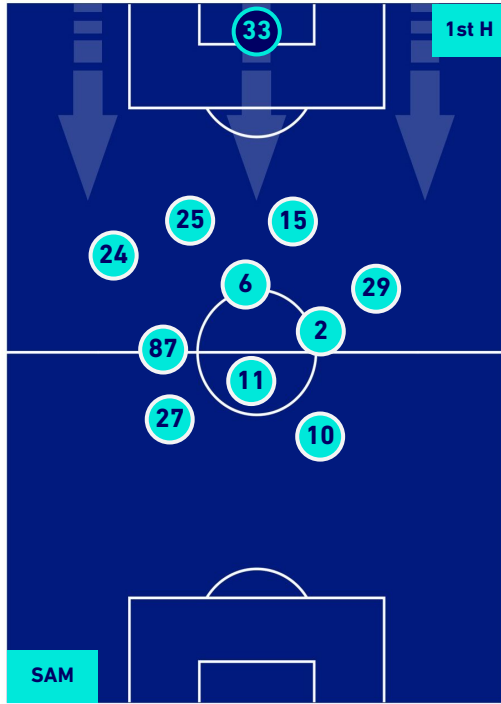
**SAMPDORIA**

**2-0**

**EMPOLI**



## PLAYERS AVERAGE POSITION [BALL POSSESSION]



Legend:

- 1st Substitution Player in
- 2nd Substitution Player in
- 3rd Substitution Player in
- 4th Substitution Player in
- 5th Substitution Player in

- Player out
- Player out
- Player out
- Player out
- Player out

- Player in / out
- Player in / out
- Player in / out
- Player in / out
- Player in / out

- 
- 
- 
- 
-



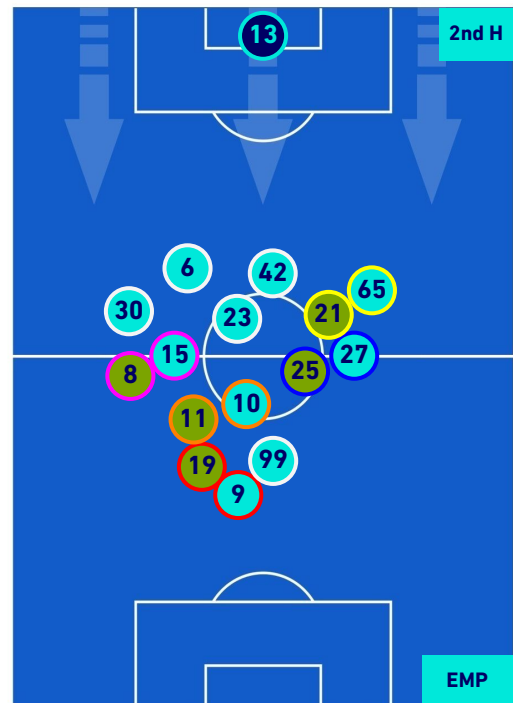
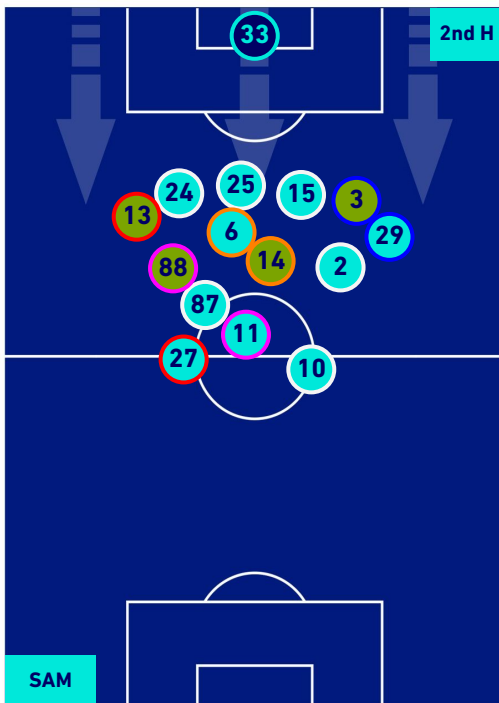
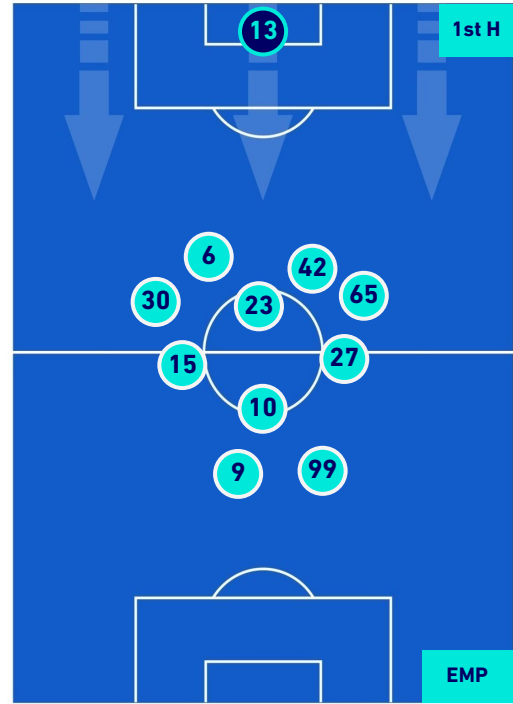
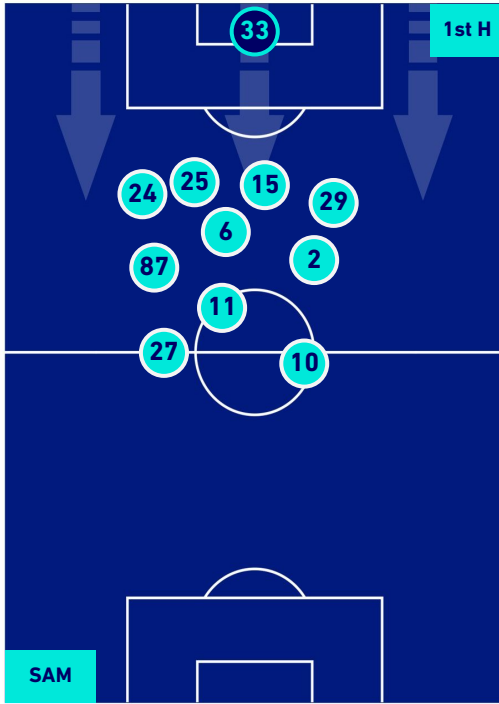
SAMPDORIA

2-0

EMPOLI



## PLAYERS AVERAGE POSITION [NO BALL POSSESSION]



Legend:

- 1st Substitution ● Player in
- 2nd Substitution ● Player in
- 3rd Substitution ● Player in
- 4th Substitution ● Player in
- 5th Substitution ● Player in

- Player out
- Player out
- Player out
- Player out
- Player out

- Player in / out
- Player in / out
- Player in / out
- Player in / out
- Player in / out

- 
- 
- 
- 
-



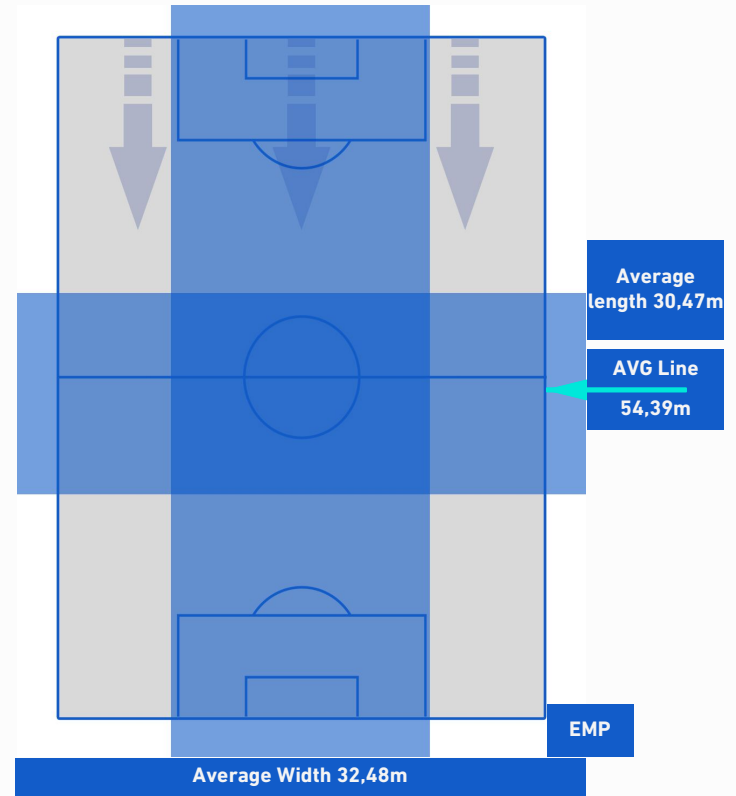
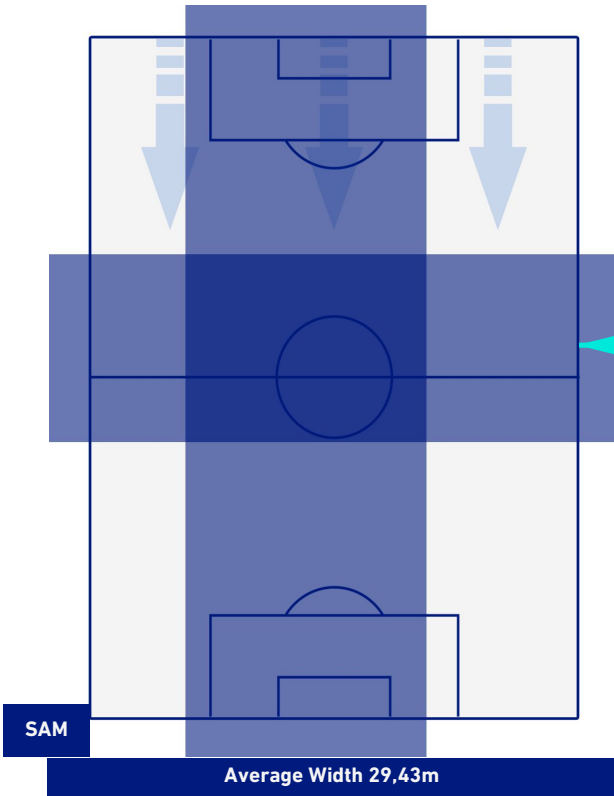
**SAMPDORIA**

**2-0**

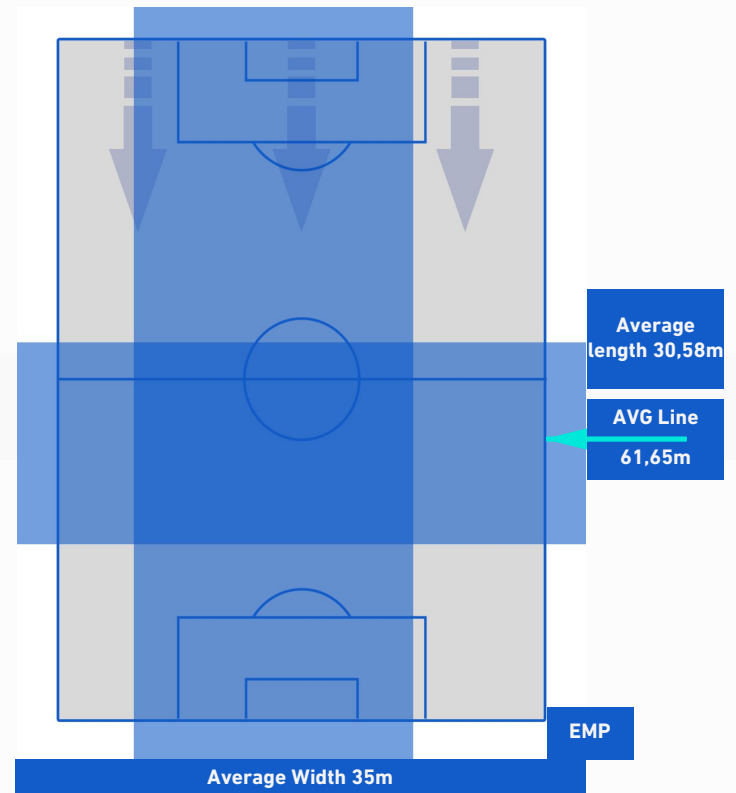
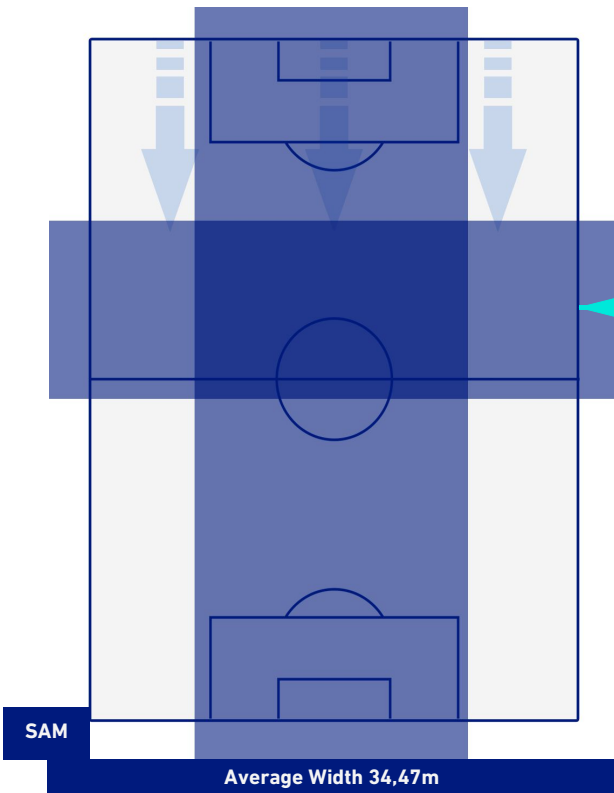
**EMPOLI**



## TEAM'S DEFENSE POSITION 1st H



## TEAM'S DEFENSE POSITION 2nd H





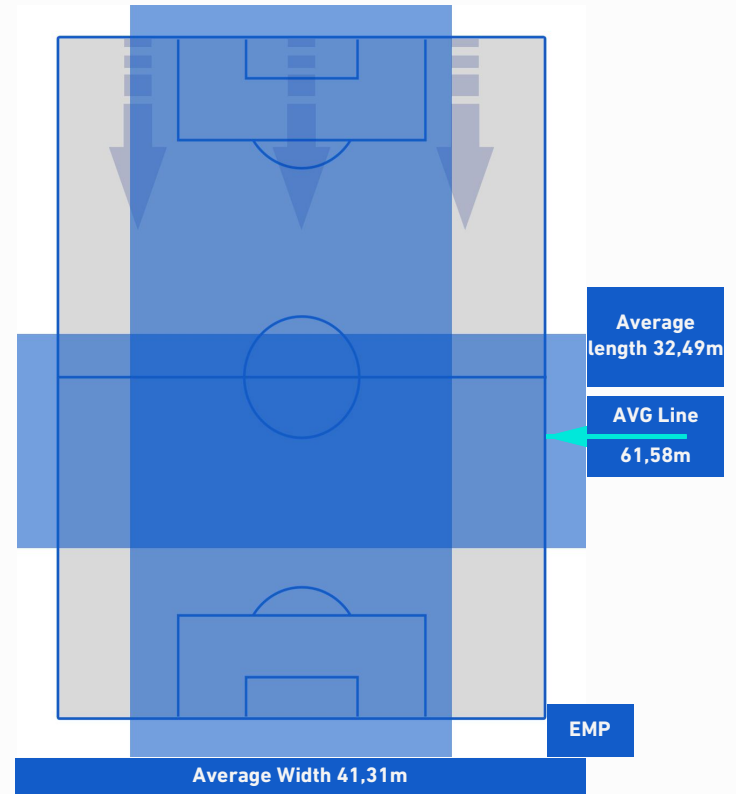
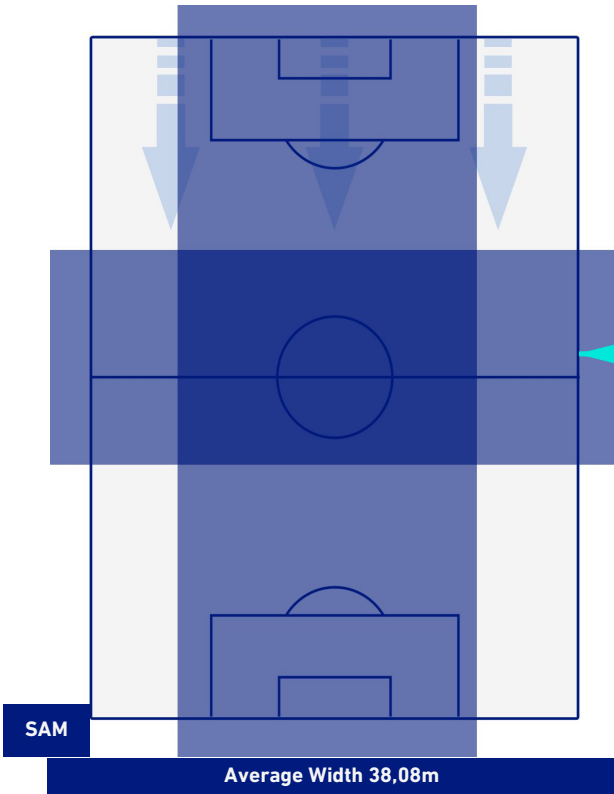
**SAMPDORIA**

**2-0**

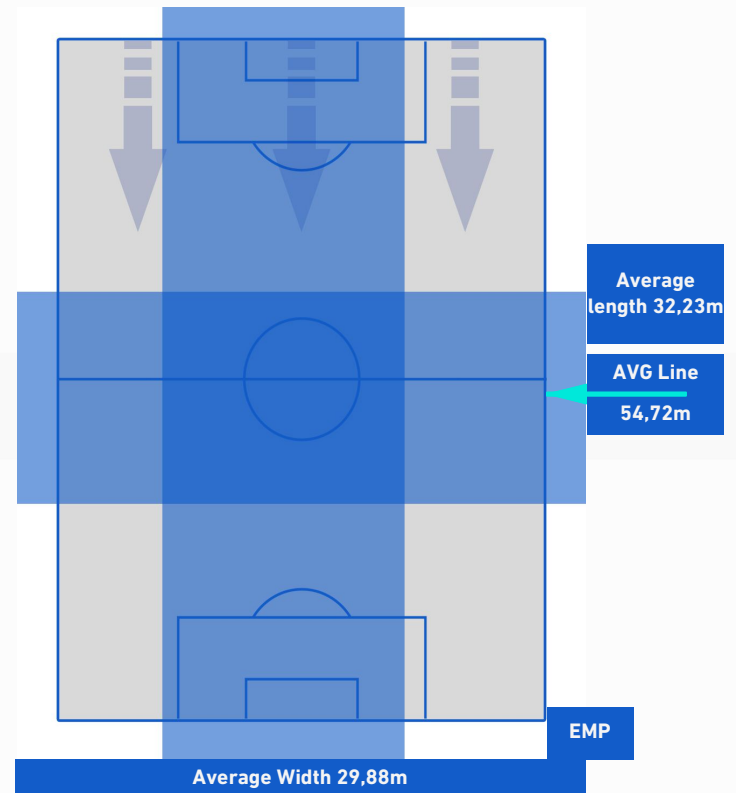
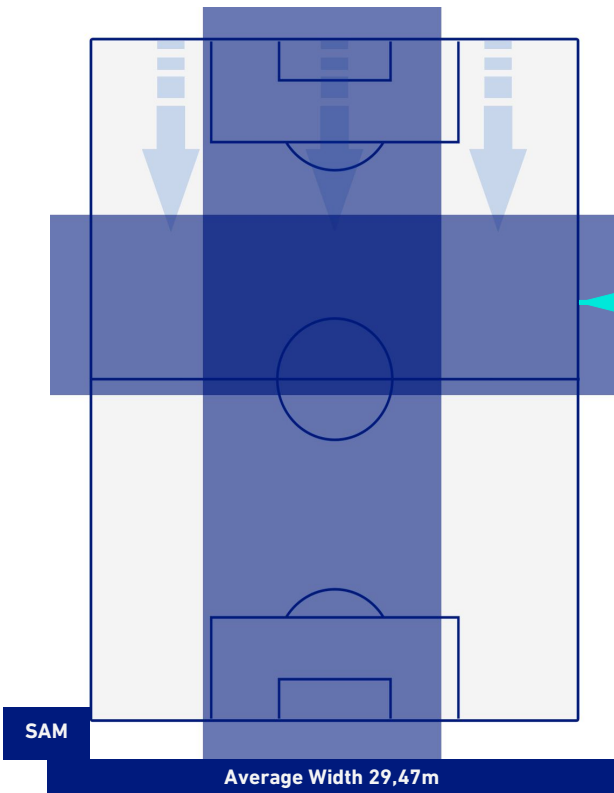
**EMPOLI**



## TEAM'S DEFENSE POSITION [BALL POSSESSION]



## TEAM'S DEFENSE POSITION [NO BALL POSSESSION]



Genova 19/02/2022 LUIGI FERRARIS STADIUM - 15:00



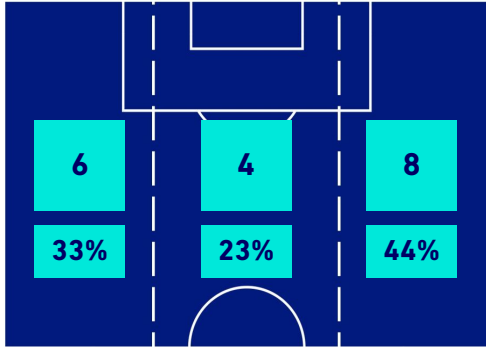
**SAMPDORIA**

**2-0**

**EMPOLI**



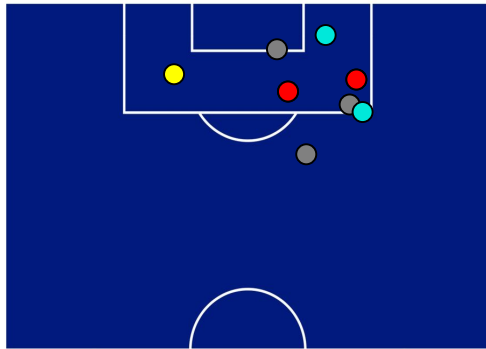
## ATTACKING PLAYS MAP



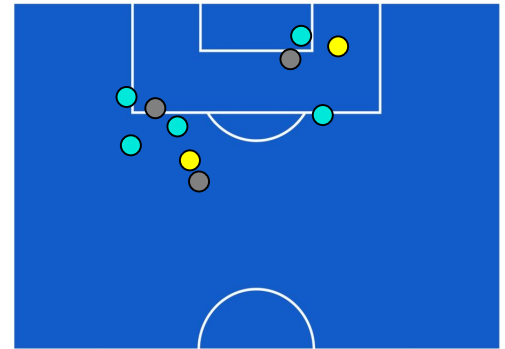
|    |                 |    |
|----|-----------------|----|
| 18 | Attacking Plays | 41 |
| 8  | Total Attempts  | 10 |
| 8  | Scoring Chances | 7  |



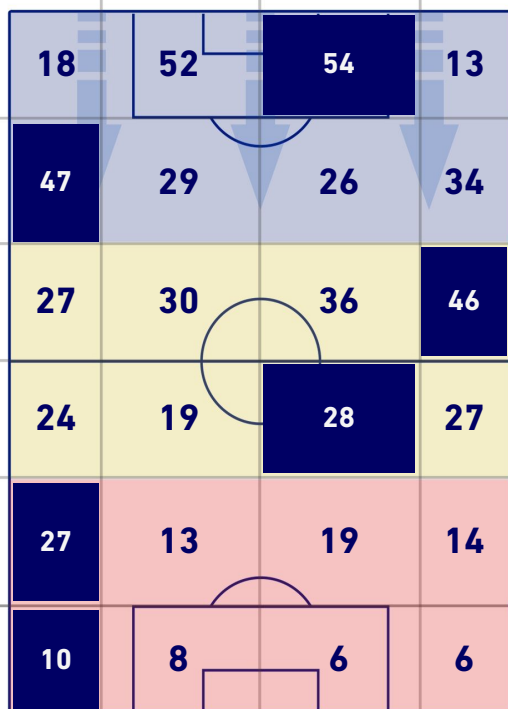
## ATTEMPTS MAP



|   |            |   |
|---|------------|---|
| 2 | Goals      | 0 |
| 3 | On target  | 2 |
| 3 | Off target | 3 |
| 2 | Blocked    | 5 |

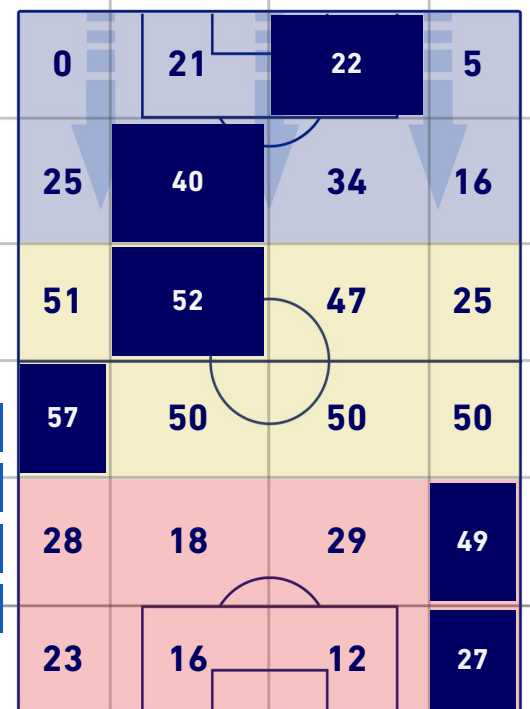


## TOUCH MAP



|     |                    |     |
|-----|--------------------|-----|
| 613 | Total Balls Played | 747 |
| 273 | DEFENSIVE          | 163 |
| 237 | MIDFIELD           | 382 |
| 103 | ATTACK ZONE        | 202 |

|                 |                       |   |              |
|-----------------|-----------------------|---|--------------|
| 14              | Touch in Attacks zone |   | 28           |
| F. CAPUTO       | 4                     | 7 | P. CUTRONE   |
| F. QUAGLIARELLA | 3                     | 3 | N. BAJRAMI   |
| M. THORSBY      | 3                     | 3 | A. LA MANTIA |





**SAMPDORIA**

**2-0**

**EMPOLI**



## KEY PLAYERS

**FABIO QUAGLIARELLA** 27

|                  |            |
|------------------|------------|
| Position         | Forward    |
| Games in Serie A | 521        |
| Goals in Serie A | 178        |
| Date of birth    | 31/01/1983 |
| Nationality      | ITA        |

Jog 43% - Run 50% - Sprint 7% **Km 6.917**

|       |       |       |
|-------|-------|-------|
| 2.979 | 3.462 | 0.475 |
|-------|-------|-------|

### Mvp Stats

|                                |      |
|--------------------------------|------|
| Minutes Played                 | 61'  |
| Goals                          | 2    |
| Scoring Chances                | 2    |
| Attempts                       | 3    |
| Attempts on target (goals)     | 2(2) |
| Balls Played                   | 31   |
| Passes Completed               | 14   |
| Passes Completed/Attempted (%) | 70%  |
| Key Passes                     | 2    |
| Recoveries                     | 3    |

### HeatMap



**NEDIM BAJRAMI** 10

|                  |            |
|------------------|------------|
| Position         | Midfielder |
| Games in Serie A | 23         |
| Goals in Serie A | 6          |
| Date of birth    | 28/02/1999 |
| Nationality      | SUI        |

Jog 35% - Run 58% - Sprint 7% **Km 8.767**

|       |       |       |
|-------|-------|-------|
| 3.112 | 5.044 | 0.611 |
|-------|-------|-------|

### Mvp Stats

|                                |      |
|--------------------------------|------|
| Minutes Played                 | 75'  |
| Attempts                       | 3    |
| Attempts on target (goals)     | 1(0) |
| Balls Played                   | 58   |
| Passes Completed               | 31   |
| Passes Completed/Attempted (%) | 84%  |
| Recoveries                     | 8    |

### HeatMap





Matchday 26  
SERIE A TIM 2021-2022

# MATCH REPORT

Genova 19/02/2022 LUIGI FERRARIS STADIUM - 15:00



**SAMPDORIA**

**2-0**

**EMPOLI**



The statistics above are to be considered definitive after 24 hours by the end of the game.

The disciplinary sanctions are not official, as they come by the real-time detection during the game and will become official at the time of the homologation by the competent bodies.

In case of dubious attribution goal, the Lega Serie A will officialize the scorer the day after each round of the League.

The ball possession data is scouted live through the television, with an estimate error of 5%.

