



Matchday 12
SERIE A TIM 2021-2022

MATCH REPORT



SPEZIA



TORINO

La Spezia 06/11/2021
ALBERTO PICCO STADIUM 15:00



SPEZIA

1-0

TORINO



Line-ups

SPEZIA	
94	IVAN PROVEDEL GK
27	KELVIN AMIAN
28	MARTIN ERLIC
43	DIMITRIOS NIKOLAOU
20	SIMONE BASTONI
8	VIKTOR KOVALENKO
7	JACOPO SALA
10	DANIELE VERDE
25	GIULIO MAGGIORE
11	EMMANUEL GYASI
18	M'BALA NZOLA



Bench	
1	JEROEN ZOET
40	PETAR ZOVKO
9	REY MANAJ
14	JAKUB KIWIOR
17	SUF PODGOREANU
19	EBRIMA COLLEY
21	SALVA FERRER
22	JANIS ANTISTE
29	EDDIE SALCEDO
44	DAVID STRELEC

Coach **THIAGO MOTTA**

TORINO	
GK	VANJA MILINKOVIC-SAVIC 32
	KOFFI DJIDJI 26
	BREMER 3
	RICARDO RODRIGUEZ 13
	WILFRIED STEPHANE SINGO 17
	SASA LUKIC 10
	TOMAS RINCON 88
	OLA AINA 34
	DENNIS PRAET 22
	KAROL LINETTY 77
	ANDREA BELOTTI 9



Bench	
	ETRIT BERISHA 1
	ARMANDO IZZO 5
	DAVID ZIMA 6
	SIMONE ZAZA 7
	DANIELE BASELLI 8
	MARKO PJACA 11
	ANTONIO SANABRIA 19
	SIMONE VERDI 24
	BEN LHASSINE KONE 25
	MERGIM VOJVODA 27
	MAGNUS WARMING 70
	ALESSANDRO BUONGIORNO 99

Coach **IVAN JURIC**

Referee **DANIELE ORSATO**
Assistant referee 1 **EDOARDO RASPOLINI**
Assistant referee 2 **DAVIDE MORO**

Fourth Official **NICCOLO' BARONI**
V.A.R.: **LUIGI NASCA**
A.V.A.R.: **ALBERTO TEGONI**

La Spezia 06/11/2021 ALBERTO PICCO STADIUM - 15:00



SPEZIA

1-0

TORINO



Match Events

SPE



TOR

SPEZIA

TORINO

1

0

- J. SALA 58'
- (V. KOVALENKO) 58'
- K. AMIAN 65'
- E. SALCEDO | J. SALA 71'
- D. NIKOLAOU 76'
- R. MANAJ | D. VERDE 80'
- V. KOVALENKO 89'
- S. FERRER | V. KOVALENKO 90'+2'

- 38' T. RINCON
- 52' K. LINETTY
- 57' D. BASELLI | T. RINCON
- 57' M. PJACA | K. LINETTY
- 57' A. SANABRIA | A. BELOTTI
- 74' S. ZAZA | W. SINGO
- 76' A. SANABRIA
- 84' A. IZZO | K. DJIDJI

Legend

- Goal
- Penalty
- Yellow Card
- Red Card
- Second Yellow Card
- Owngoal
- Missed Penalty
- Assist
- Substitution



SPEZIA

1-0

TORINO



Game time



Played Time
45%



1st Half - 2nd Half
21'38 - 21'54

BALL POSSESSION

Played Time 43'32



SPEZIA

TORINO

Total 17'24



DEFENSIVE HALF

SPEZIA

ATTACKING HALF

Total 26'08



DEFENSIVE HALF

TORINO

ATTACKING HALF

QUARTERS BALL POSSESSION

1st H	0'-15'	2nd H	0'-15'
4'01	2'41	1'55	5'37
	16'-30'		16'-30'
1'46	4'01	2'52	4'02
	31'-47'		31'-49'
3'55	5'14	2'55	4'33

TEAM STATS

	SPE	TOR
Attempts	7	9
Attempts on target (goals)	3(1)	1(0)
Attempts on target by Set piece plays		1
Attempts on target from penalty box	1	1
Attempts off target	3	4
Blocked Shots	1	4
Scoring Chances	5	5
Key Passes	5	5
Assists	1	
Fouls Committed	15	17
Corners	2	3
Offsides	3	2
Cross Successful/Attempted	1/2	6/12
Dribbling	3	4
Passes Completed	233	383
Passes Completed/Attempted (%)	70%	80%
Passes Final Third	51	100
Balls played forward	124	222
Long Passes	29	30
Saves	1	2
Recoveries	58	62



SPEZIA

1-0

TORINO



PLAYER STATS

SPEZIA										TORINO									
	M	GC	OG	S	STP	SF	FYC	SYC	RC		M	GC	OG	S	STP	SF	FYC	SYC	RC
94	I. PROVEDEL	97'			1	1													
	M	G	OG	A	AT	PT	SC	FS	BP	AS	KP	P	P(%)	PA	R	FYC	SYC	RC	
27	K. AMIAN	97'						1	61			23	70	16	5	1			
28	M. ERLIC	97'						1	45			24	80	6	10				
43	D. NIKOLAOU	97'							42			22	69	8	5	1			
20	S. BASTONI	97'					2	1	62		2	25	74	15	6				
8	V. KOVALENKO	94'					1	2	38	1	1	19	63	15	3	1			
7	J. SALA	73'	1		1	1		1	45			26	84	11	7				
10	D. VERDE	82'			1				36			14	58	6	2				
25	G. MAGGIORE	97'					1	5	37		1	19	79	12	1				
11	E. GYASI	97'			1			1	36		1	21	78	10	8				
18	M. NZOLA	97'			3	2		2	42			14	70	12	1				
9	R. MANAJ	15'			1			2	10			3	50	1	1				
21	S. FERRER	3'							1				0						
29	E. SALCEDO	24'						1	13			3	75	1					
	M	GC	OG	S	STP	SF	FYC	SYC	RC		M	GC	OG	S	STP	SF	FYC	SYC	RC
32	V. MILINKOVIC-SAVIC	97'	1		2														
	M	G	OG	A	AT	PT	SC	FS	BP	AS	KP	P	P(%)	PA	R	FYC	SYC	RC	
26	K. DJIDJI	86'			1				70			49	86	21	6				
3	BREMER	97'						1	70			37	79	10	7				
13	R. RODRIGUEZ	97'						1	72			46	82	25	7				
17	W. SINGO	76'			2		1	3	64		1	30	81	17	6				
10	S. LUKIC	97'					1	2	67		1	51	91	34	5				
88	T. RINCON	59'						1	44			36	86	24	5	1			
34	O. AINA	97'			1			3	70			26	72	18	7				
22	D. PRAET	97'					1		49		1	26	68	23	6				
77	K. LINETTY	59'							21			12	80	8	1	1			
9	A. BELOTTI	59'						1	21			8	67	5	2				
5	A. IZZO	11'			1	1			9			6	86	4					
7	S. ZAZA	21'			1				7			5	100	4	1				
8	D. BASELLI	38'					1		30		1	23	88	16	3				
11	M. PJACA	38'			2			1	10			3	75	3					
19	A. SANABRIA	38'			1		1	1	19		1	12	92	10		1			

Legenda

FYC	First Yellow Card
OG	Owngoal
BP	Balls Played
SYC	Second Yellow Card
RC	Red Card
G	Goals
GC	Goal Conceded
M	Minutes Played
AS	Assists
FS	Fouls Suffered
A	Attempts
AT	Attempts on target
SC	Scoring Chances
PT	Posts
S	Saves
STP	Saves on set piece plays
SF	Saves on free kick
P(%)	Passes Completed/Attempted (%)
KP	Key Passes
PA	Balls played forward
P	Passes Completed
R	Recoveries

PLAYERS RANKING

Attempts			Attempts on target (goals)			Passes Final Third			Scoring Chances		
1	M. NZOLA	SPE 3	1	M. NZOLA	SPE 2	1	D. PRAET	TOR 14	1	S. BASTONI	SPE 2
2	M. PJACA	TOR 2	2	A. IZZO	TOR 1	2	S. LUKIC	TOR 13	2	D. BASELLI	TOR 1
3	W. SINGO	TOR 2	3	J. SALA	SPE 1	3	O. AINA	TOR 10	3	E. GYASI	SPE 1
4	O. AINA	TOR 1				4	S. BASTONI	SPE 10	4	V. KOVALENKO	SPE 1
5	K. DJIDJI	TOR 1				5	K. DJIDJI	TOR 10	5	S. LUKIC	TOR 1
Balls Played			Passes Completed			Key Passes			Dribbling		
1	R. RODRIGUEZ	TOR 72	1	S. LUKIC	TOR 51	1	S. BASTONI	SPE 2	1	S. BASTONI	SPE 1
2	O. AINA	TOR 70	2	K. DJIDJI	TOR 49	2	D. BASELLI	TOR 1	2	K. DJIDJI	TOR 1
3	BREMER	TOR 70	3	R. RODRIGUEZ	TOR 46	3	E. GYASI	SPE 1	3	S. LUKIC	TOR 1
4	K. DJIDJI	TOR 70	4	BREMER	TOR 37	4	V. KOVALENKO	SPE 1	4	M. NZOLA	SPE 1
5	S. LUKIC	TOR 67	5	T. RINCON	TOR 36	5	S. LUKIC	TOR 1	5	D. PRAET	TOR 1



SPEZIA

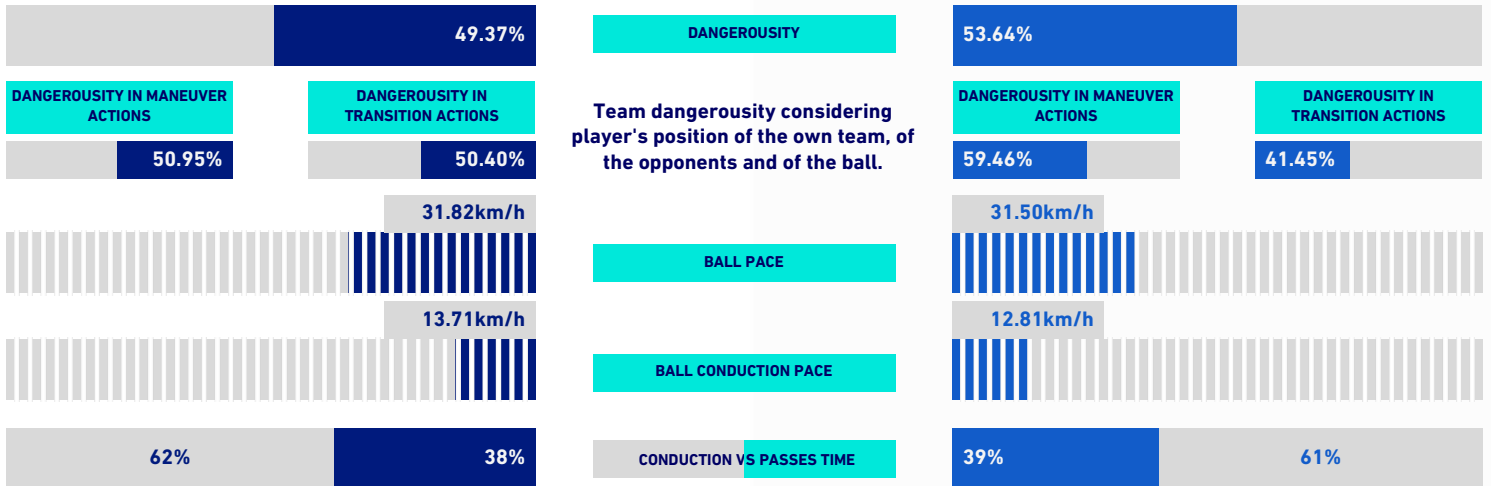
1-0

TORINO



VIRTUAL COACH

TEAM INDICATORS



RECORDMEN

PASS GAIN

Number of players overtaken by a vertical pass (only successful passes are considered). It shows how much a player tends to overcome the opponent's pressure lines.

Rank	Player	Spezia	Torino
1	I. PROVEDEL	4.70	A. SANABRIA (5.00)
2	D. NIKOLAOU	4.13	M. PJACA (4.00)
3	D. VERDE	4.00	V. MILINKOVIC-SAVIC (3.67)
4	S. BASTONI	3.75	O. AINA (3.67)
5	E. GYASI	3.67	D. BASELLI (3.67)

PASS RISK

Measures the player's propensity to risk the pass (only successful passes are considered).

Rank	Player	Spezia	Torino
1	I. PROVEDEL	63.62%	V. MILINKOVIC-SAVIC (34.65%)
2	D. NIKOLAOU	51.17%	K. LINETTY (28.50%)
3	S. BASTONI	38.14%	O. AINA (23.36%)
4	K. AMIAN	34.58%	T. RINCON (22.37%)
5	V. KOVALENKO	32.08%	K. DJIDJI (20.17%)

RECEIVED PRESSURE

How much the player with the ball is pressed by the opposite team. It depends on the speed, running direction and distance from the opponent who is at a shorter distance.

Rank	Player	Spezia	Torino
1	M. NZOLA	61.65%	A. BELOTTI (65.64%)
2	V. KOVALENKO	58.39%	A. SANABRIA (63.44%)
3	G. MAGGIORE	56.97%	K. LINETTY (60.60%)
4	J. SALA	54.91%	T. RINCON (53.92%)
5	D. VERDE	53.81%	D. PRAET (53.39%)

PASS AVAILABILITY

Ability of a player to get away from opponents to receive the ball. It is computed for all the teammates of the player in possession.

Rank	Player	Spezia	Torino
1	K. AMIAN	79.97%	K. DJIDJI (76.56%)
2	S. BASTONI	76.83%	R. RODRIGUEZ (76.40%)
3	D. NIKOLAOU	75.36%	W. SINGO (72.41%)
4	J. SALA	72.73%	BREMER (71.74%)
5	M. ERLIC	71.66%	D. BASELLI (71.07%)



SPEZIA

1-0

TORINO



PLAYERS RANKING [ATHLETICS PERFORMANCE]

Jog - Run - Sprint (km)			
1	VIKTOR KOVALENKO	Total 10.369	
	2.152	6.984	1.233
2	DIMITRIOS NIKOLAOU	Total 9.856	
	2.328	6.679	0.849
3	M'BALA NZOLA	Total 9.788	
	2.474	6.278	1.036
4	KELVIN AMIAN	Total 9.756	
	2.507	6.364	0.885
5	GIULIO MAGGIORE	Total 9.443	
	1.814	6.811	0.818

AVG Speed km/h (run)			
1	S. FERRER	SPE	9
2	R. MANAJ	SPE	8.4
3	G. MAGGIORE	SPE	8
4	J. SALA	SPE	7.8
5	E. SALCEDO	SPE	7.8

AVG Speed km/h (sprint)			
1	V. KOVALENKO	SPE	33.25
2	G. MAGGIORE	SPE	31.96
3	D. VERDE	SPE	31.46
4	M. NZOLA	SPE	31.04

TEAM STATS [ATHLETICS PERFORMANCE]

Distance Covered (km)	97.08
AVG Speed (km/h)	7

Jog-Run-Sprint (km 97.08)		
22.812	64.911	9.357

Jog - Run - Sprint (km)			
1	SASA LUKIC	Total 10.789	
	2.229	7.565	0.995
2	RICARDO RODRIGUEZ	Total 10.302	
	2.668	6.623	1.011
3	DENNIS PRAET	Total 10.203	
	2.481	6.872	0.85
4	BREMER	Total 9.88	
	2.649	6.57	0.661
5	OLA AINA	Total 9.639	
	2.58	6.146	0.913

AVG Speed km/h (run)			
1	A. IZZO	TOR	8.9
2	T. RINCON	TOR	7.8
3	D. BASELLI	TOR	7.6
4	S. LUKIC	TOR	7.6
5	K. LINETTY	TOR	7.5

AVG Speed km/h (sprint)			
1	A. BELOTTI	TOR	33.72
2	W. SINGO	TOR	33.12
3	T. RINCON	TOR	30.72
4	A. SANABRIA	TOR	29.85

Distance Covered (km)	101.552
AVG Speed (km/h)	6.8

Jog-Run-Sprint (km 101.552)		
24.746	67.391	9.415

Fitness data displayed in the report are the ones collected in real time and could be different to the post-processed ones, delivered to the coaching staff

La Spezia 06/11/2021 ALBERTO PICCO STADIUM - 15:00



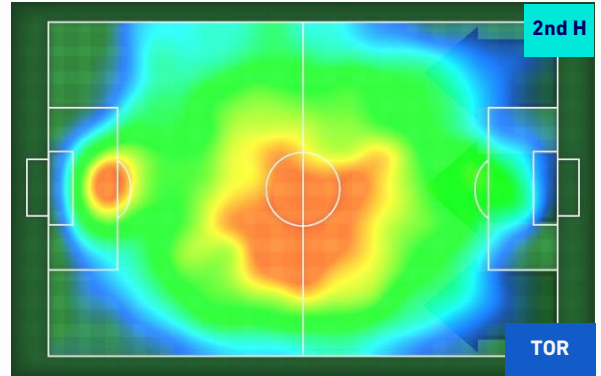
SPEZIA

1-0

TORINO



HEATMAP





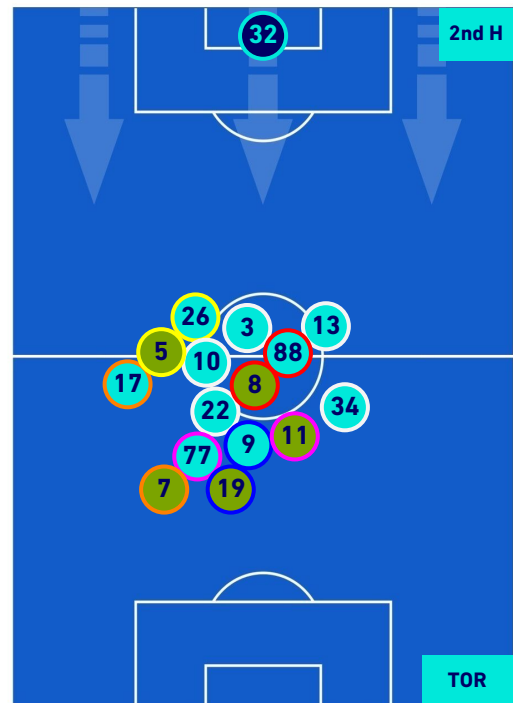
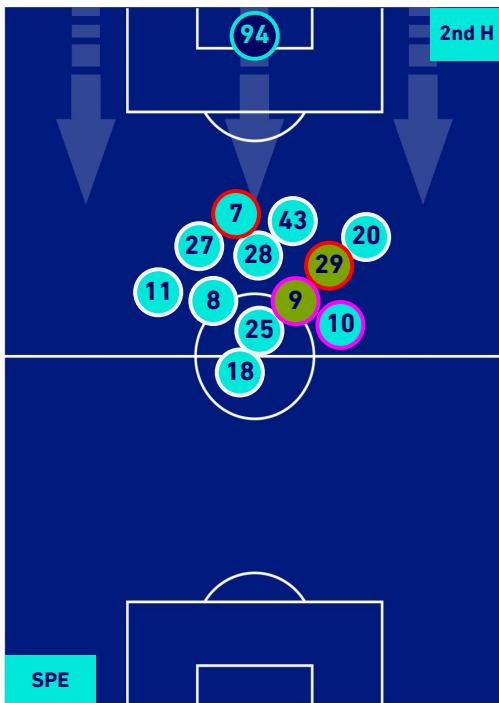
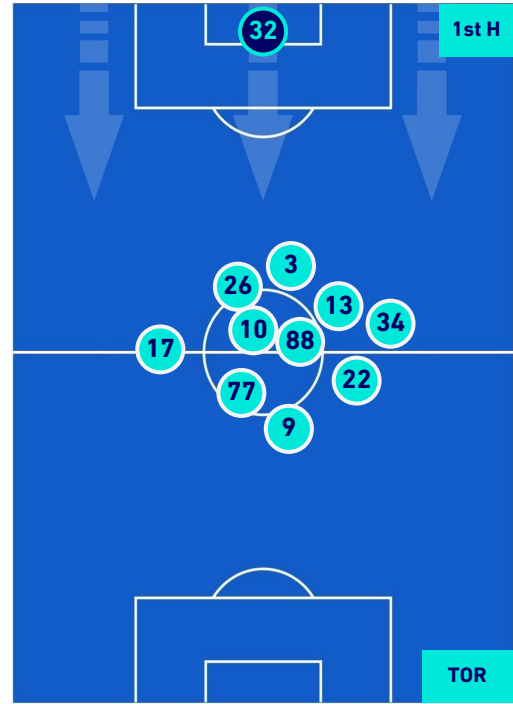
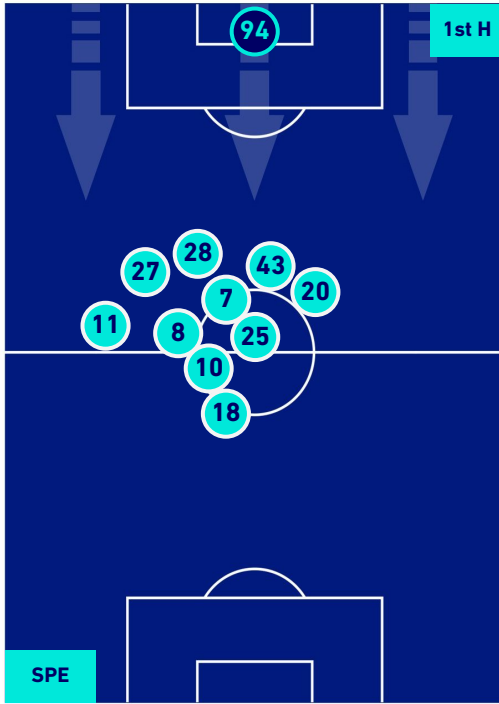
SPEZIA

1-0

TORINO



PLAYERS AVERAGE POSITION



Legend:

- 1st Substitution ● Player in
- 2nd Substitution ● Player in
- 3rd Substitution ● Player in
- 4th Substitution ● Player in
- 5th Substitution ● Player in

- Player out
- Player out
- Player out
- Player out
- Player out

- Player in / out
- Player in / out
- Player in / out
- Player in / out
- Player in / out

-
-
-
-
-



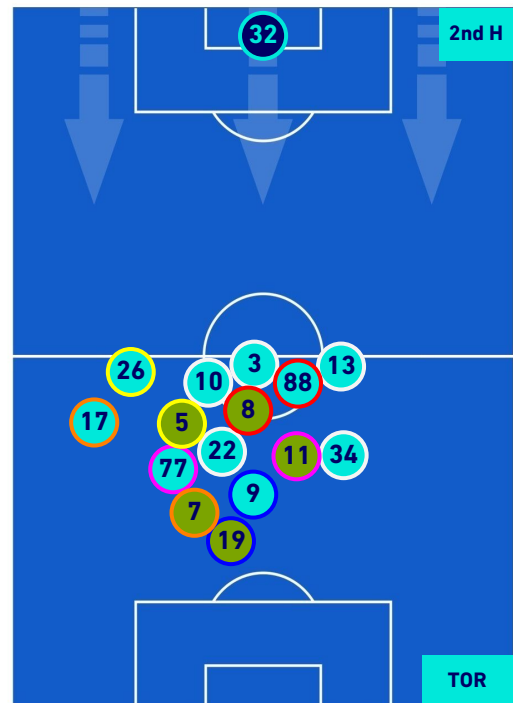
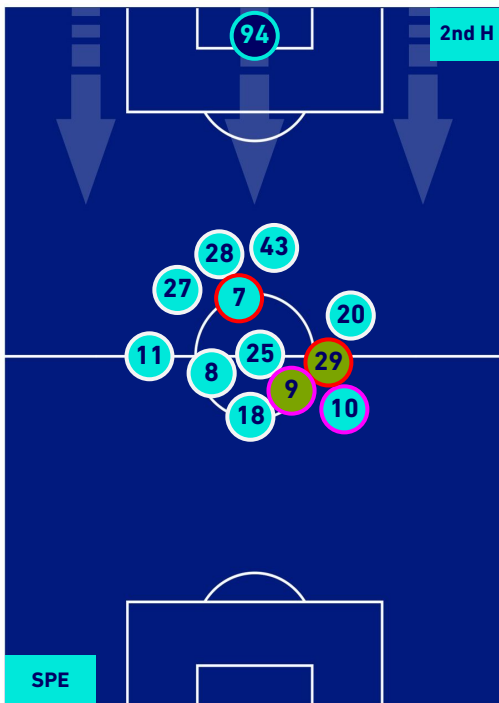
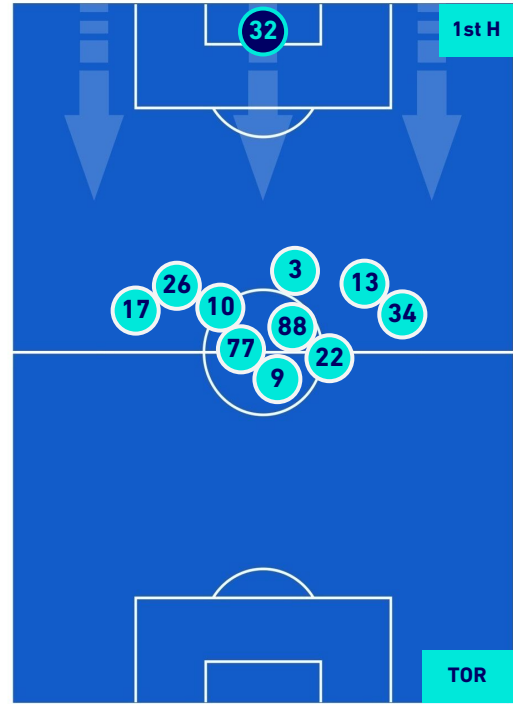
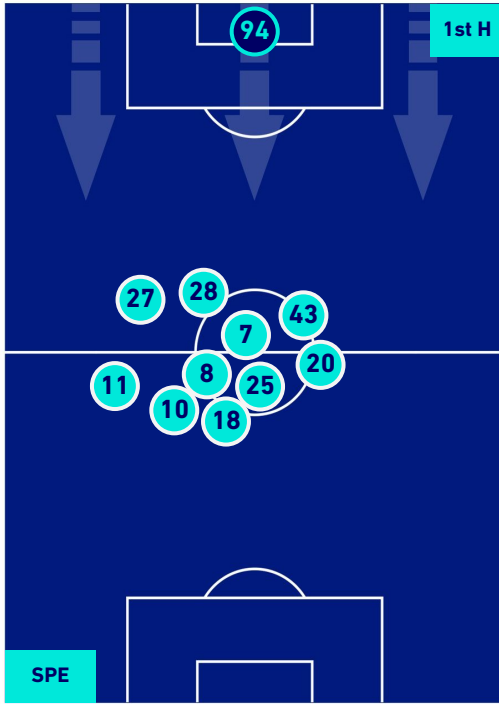
SPEZIA

1-0

TORINO



PLAYERS AVERAGE POSITION [BALL POSSESSION]



Legend:

- 1st Substitution Player in
- 2nd Substitution Player in
- 3rd Substitution Player in
- 4th Substitution Player in
- 5th Substitution Player in

- Player out
- Player out
- Player out
- Player out
- Player out

- Player in / out
- Player in / out
- Player in / out
- Player in / out
- Player in / out

-
-
-
-
-



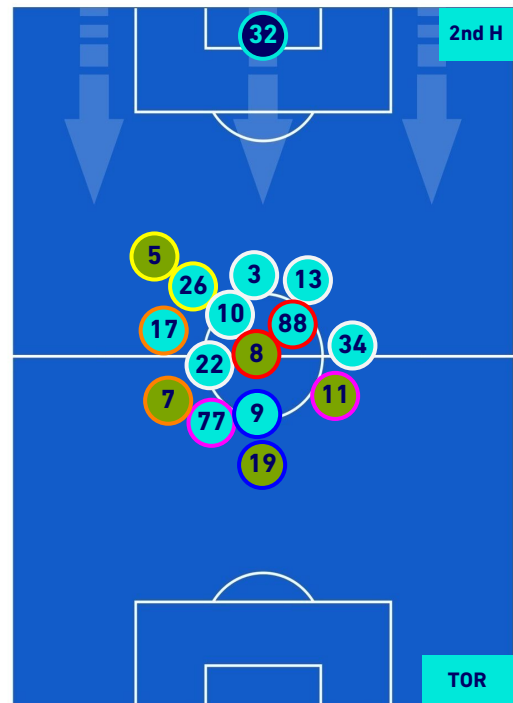
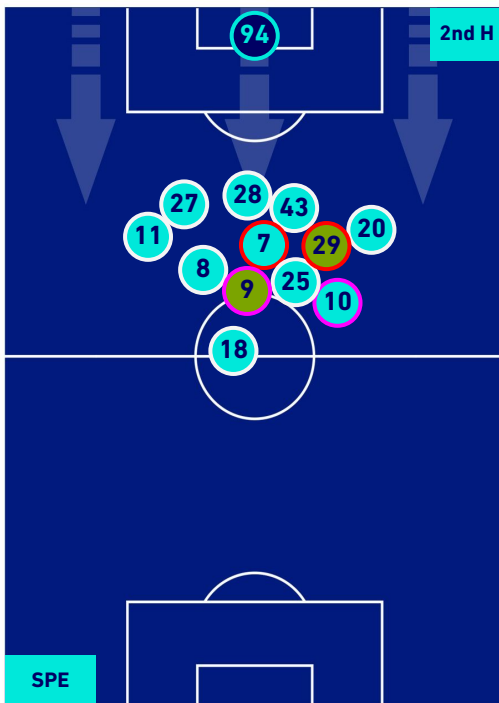
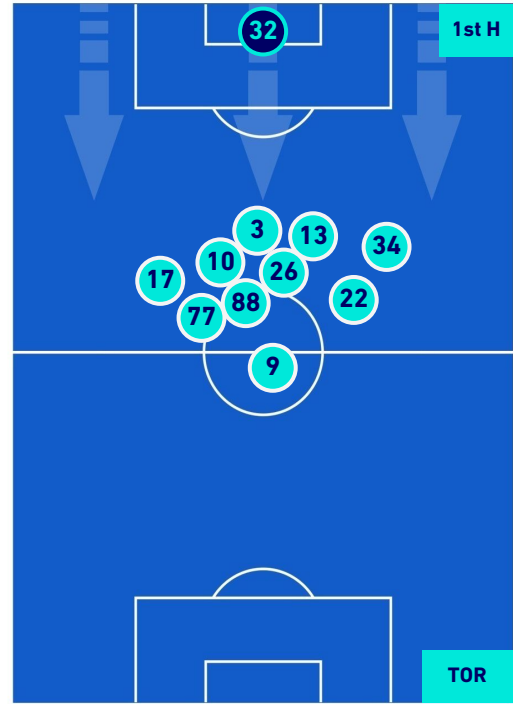
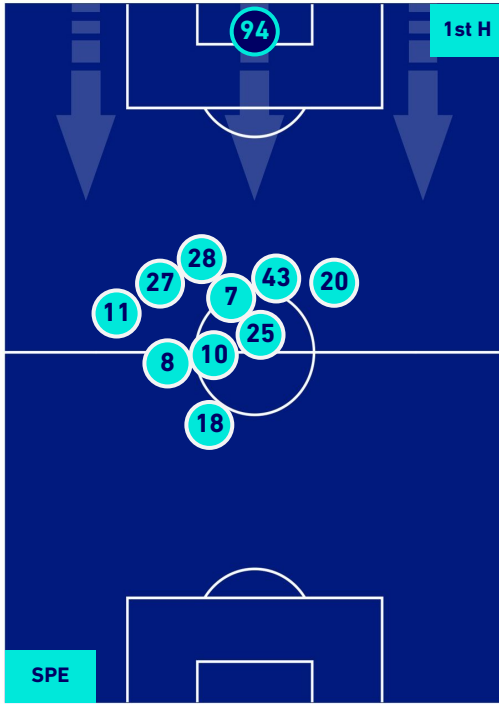
SPEZIA

1-0

TORINO



PLAYERS AVERAGE POSITION [NO BALL POSSESSION]



Legend:

- 1st Substitution Player in
- 2nd Substitution Player in
- 3rd Substitution Player in
- 4th Substitution Player in
- 5th Substitution Player in

- Player out
- Player out
- Player out
- Player out
- Player out

- Player in / out
- Player in / out
- Player in / out
- Player in / out
- Player in / out

-
-
-
-
-



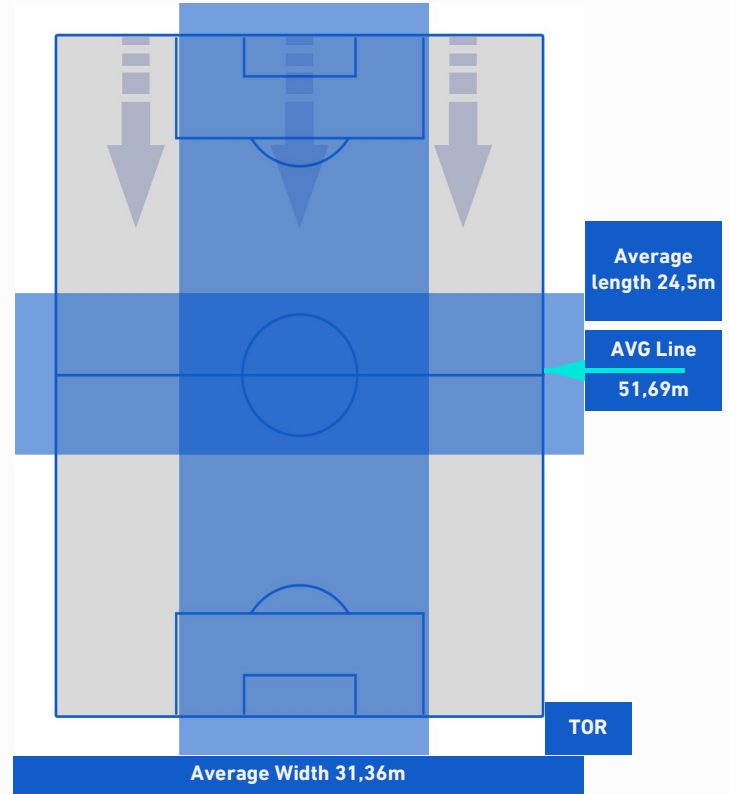
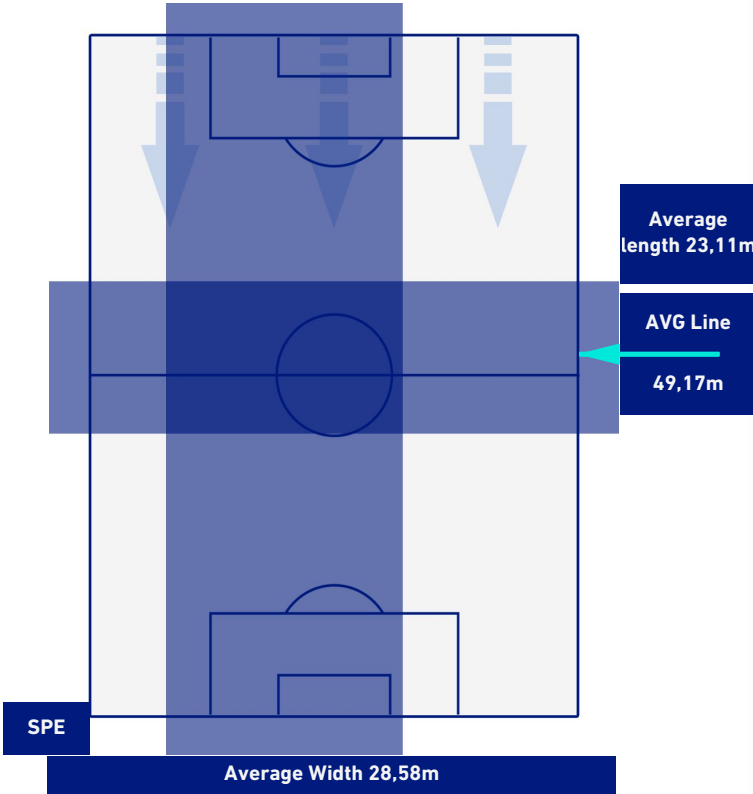
SPEZIA

1-0

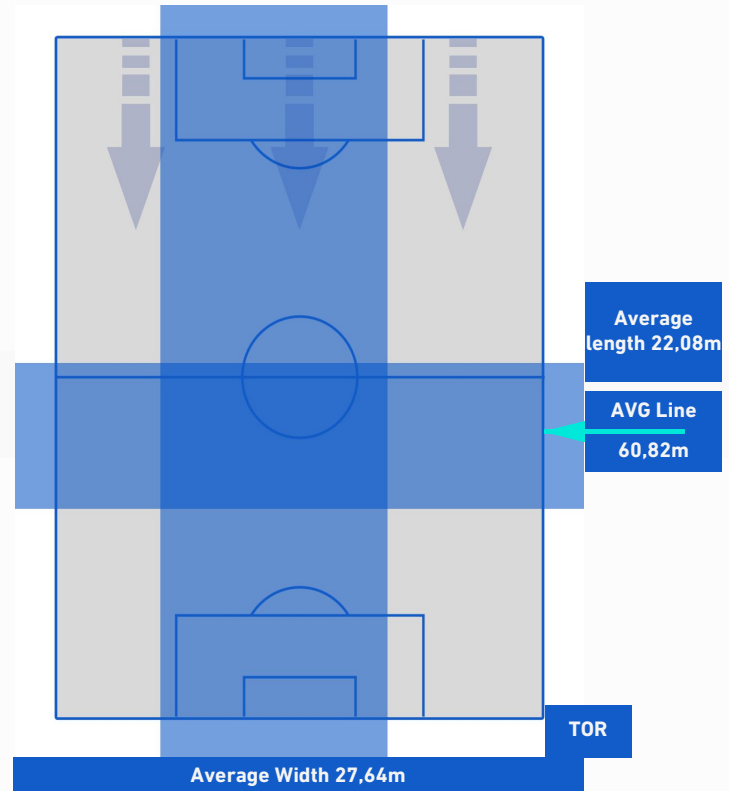
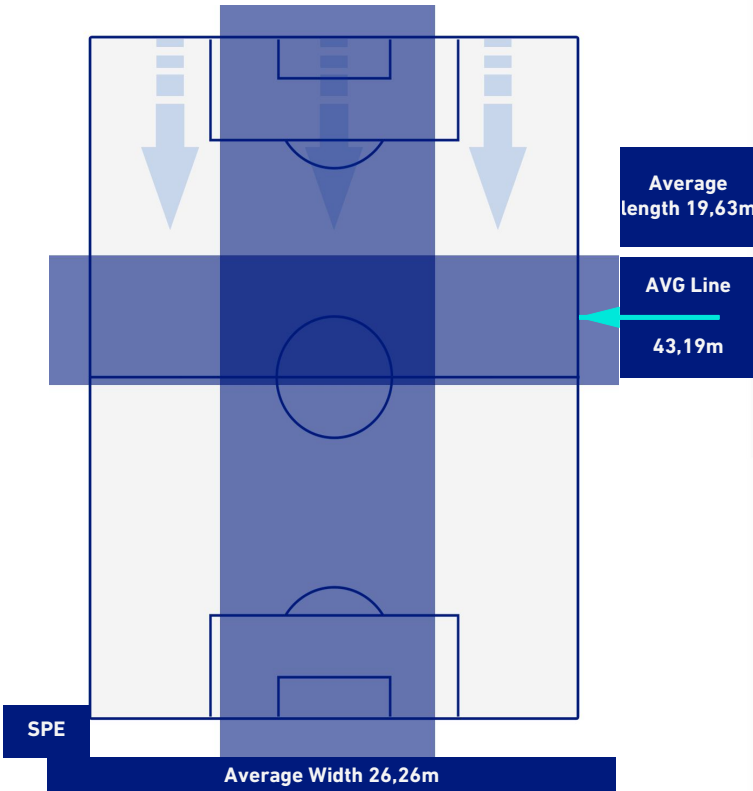
TORINO



TEAM'S DEFENSE POSITION 1st H



TEAM'S DEFENSE POSITION 2nd H





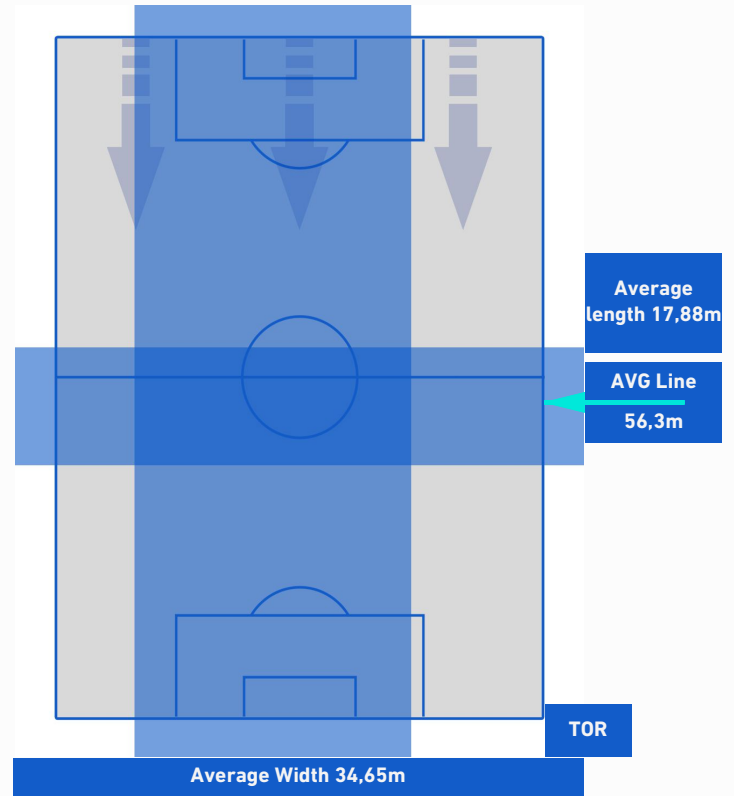
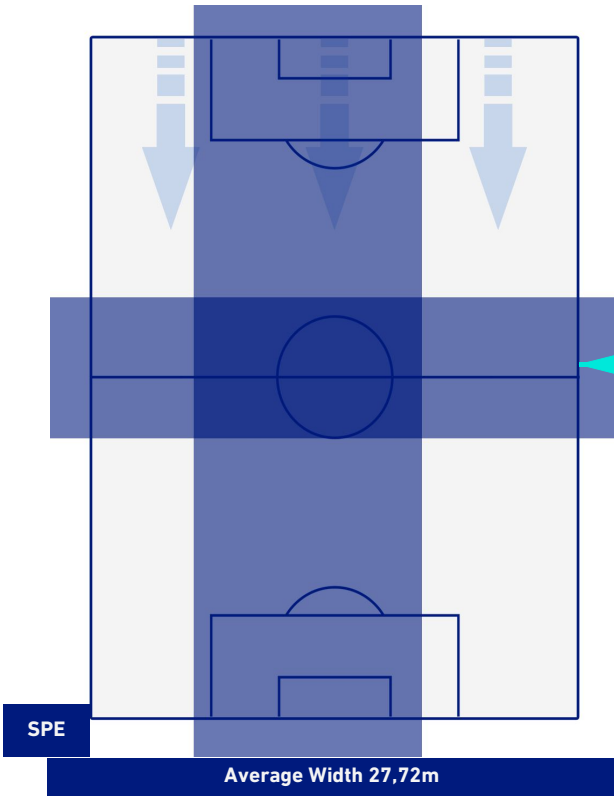
SPEZIA

1-0

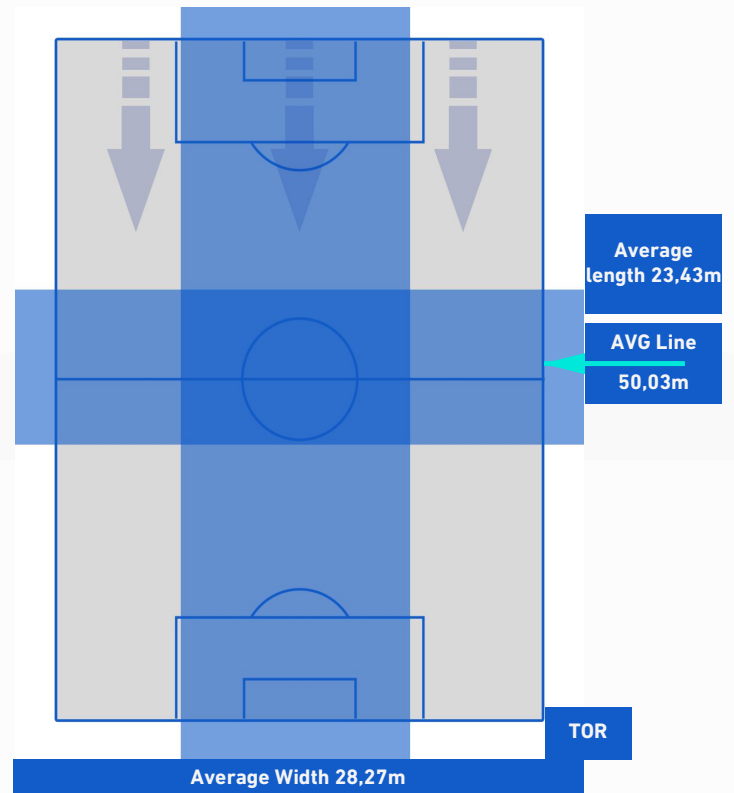
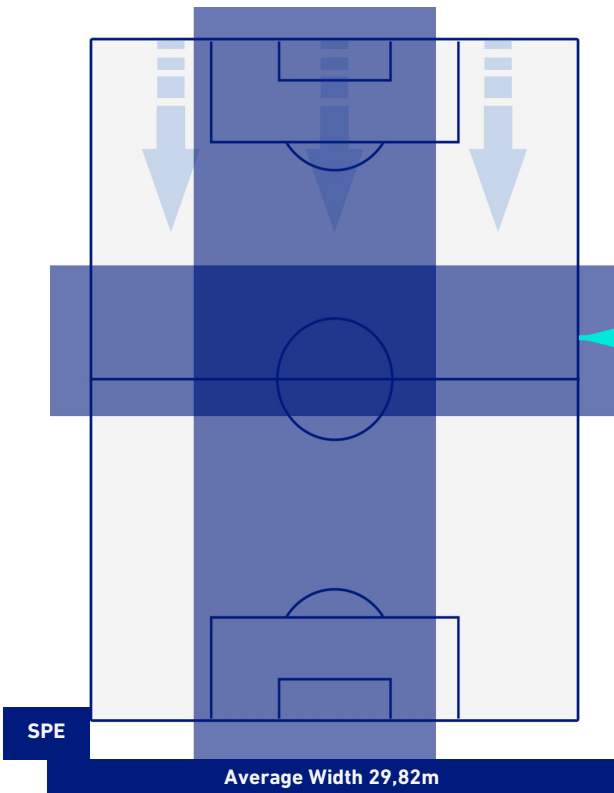
TORINO



TEAM'S DEFENSE POSITION [BALL POSSESSION]



TEAM'S DEFENSE POSITION [NO BALL POSSESSION]



La Spezia 06/11/2021 ALBERTO PICCO STADIUM - 15:00



SPEZIA

1-0

TORINO



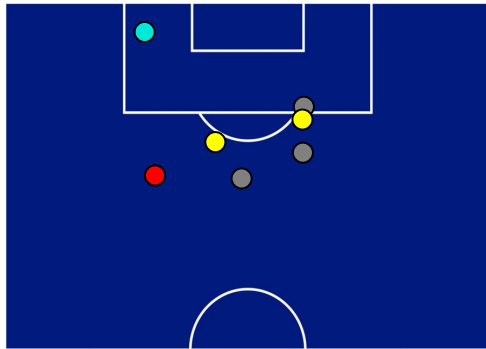
ATTACKING PLAYS MAP



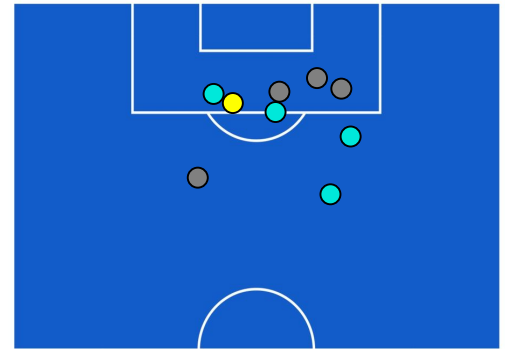
24	Attacking Plays	27
7	Total Attempts	9
5	Scoring Chances	5



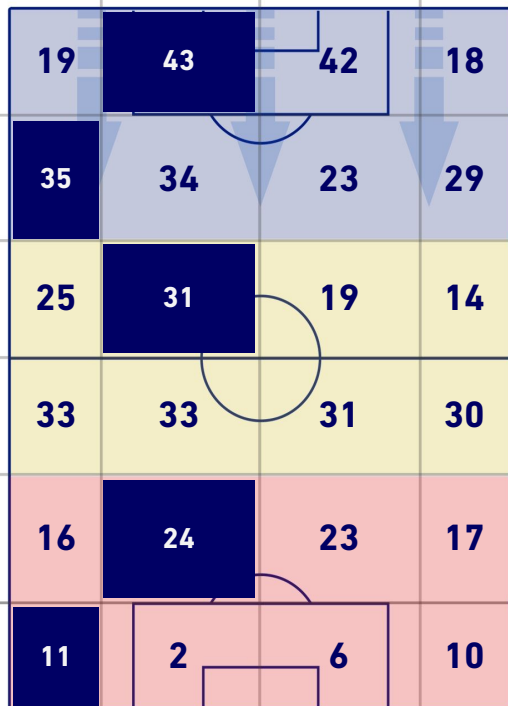
ATTEMPTS MAP



1	Goals	0
3	On target	1
3	Off target	4
1	Blocked	4

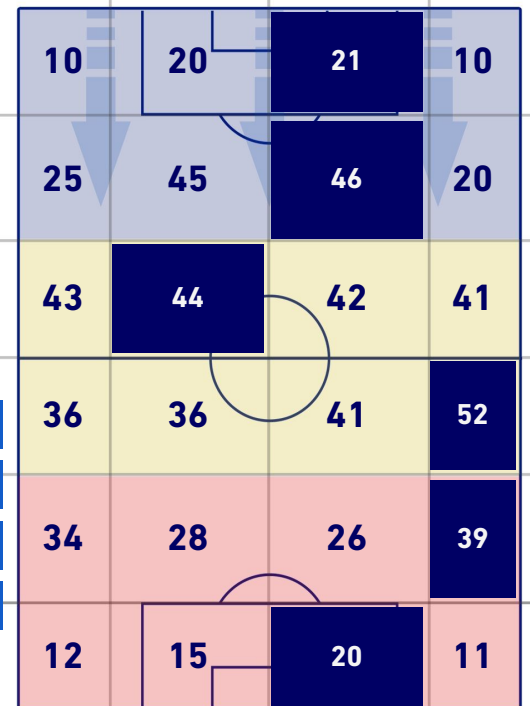


TOUCH MAP



568	Total Balls Played	717
243	DEFENSIVE	197
216	MIDFIELD	335
109	ATTACK ZONE	185

8	Touch in Attacks zone		35
M. NZOLA	4	5	A. BELOTTI
J. SALA	2	4	BREMER
R. MANAJ	1	4	M. PJACA



La Spezia 06/11/2021 ALBERTO PICCO STADIUM - 15:00



SPEZIA

1-0

TORINO



KEY PLAYERS

JACOPO SALA **7**

Position	Midfielder
Games in Serie A	136
Goals in Serie A	3
Date of birth	05/12/1991
Nationality	ITA

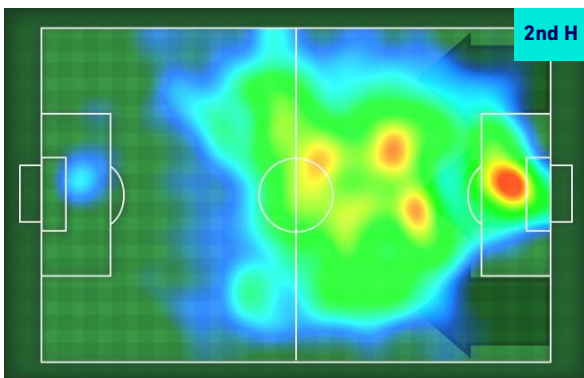
Jog 21% - Run 68% - Sprint 11% **Km 7.711**

1.637	5.272	0.802
-------	-------	-------

Mvp Stats

Minutes Played	73'
Goals	1
Attempts	1
Attempts on target (goals)	1(1)
Balls Played	45
Passes Completed	26
Passes Completed/Attempted (%)	84%
Recoveries	7
Fouls Suffered	1

HeatMap



OLA AINA **34**

Position	Defender
Games in Serie A	72
Goals in Serie A	1
Date of birth	08/10/1996
Nationality	NGA

Jog 27% - Run 64% - Sprint 9% **Km 9.639**

2.58	6.146	0.913
------	-------	-------

Mvp Stats

Minutes Played	97'
Attempts	1
Balls Played	70
Passes Completed	26
Passes Completed/Attempted (%)	72%
Recoveries	7
Fouls Suffered	3

HeatMap





Matchday 12
SERIE A TIM 2021-2022

MATCH REPORT

La Spezia 06/11/2021 ALBERTO PICCO STADIUM - 15:00



SPEZIA

1-0

TORINO



The statistics above are to be considered definitive after 24 hours by the end of the game.

The disciplinary sanctions are not official, as they come by the real-time detection during the game and will become official at the time of the homologation by the competent bodies.

In case of dubious attribution goal, the Lega Serie A will officialize the scorer the day after each round of the League.

The ball possession data is scouted live through the television, with an estimate error of 5%.